

This document is provided for product evaluation purposes only. It is not intended to be used in place of the package insert shipped with the product.



SIV Western Blot Assay



ZMC Catalog No. 0801500 (10 Strip Kit)
0801501 (30 Strip Kit)
0801502 (10 Strips)

FOR RESEARCH USE ONLY. Not for *in vitro* Diagnostic Use

INTENDED USE

Simian Immunodeficiency Virus (SIV) is the most closely related lentivirus to Human Immunodeficiency Virus (HIV), therefore, SIV infection in monkeys has become the best animal model for studying the pathogenesis of and efficacy of vaccines against HIV infection in humans.^(1-7,10-12)

The ZeptoMetrix Western Blot Assay is a qualitative enzyme immunoassay for the *in vitro* detection of antibodies to SIV in serum or plasma. **It is supplied for research purposes only.** It is not intended for use in the diagnosis or prognosis of disease, or for screening and may not be used as a confirmatory test in diagnostic situations.

PRINCIPLE OF THE TEST

Nitrocellulose strips contain SIV_{MAC} viral proteins resulting from electrophoresis and electroblotting of detergent disrupted virus particles.^(8,9) A serum control band is included on each strip to minimize the risk of false negative results due to operational error.

Individual strips are reacted with diluted serum or plasma specimens. If specific SIV antibodies are present, they will bind to the SIV proteins on the nitrocellulose. The strips are washed to remove unbound material. The bound antibodies are visualized by subsequent reaction with goat anti-human IgG conjugated with alkaline phosphatase, followed by BCIP/NBT substrate.

MATERIALS SUPPLIED

- **SIV Nitrocellulose Strips (10 or 30 strips):** Contains electrophoretically separated SIV proteins. Also contains bovine proteins as a blocking agent.
- **Non-Reactive Control (1 vial, 100 µl):** Serum or plasma non-reactive for HTLV, HCV, HIV, SIV and Hepatitis B surface antigen. Contains 0.1% sodium azide as a preservative.
- **Reactive Control (1 vial, 100 µl):** Heat inactivated serum or plasma containing a high titer of antibodies to SIV. Contains 0.1% sodium azide.
- **Blotting Buffer (1 bottle, 125 ml):** Contains Tris, NaCl, non-immune goat serum and Tween-20®. Contains 0.1% sodium azide as a preservative.
- **20X Wash Buffer (1 bottle, 100 ml):** Contains Tween-20®, Tris, and NaCl. Contains 0.1% sodium azide when diluted as a preservative.
- **Conjugate (1 vial, 100 µl):** Goat anti-human IgG (heavy and light chain) antibodies. Contains Tris, NaCl and non-immune goat serum. Contains 0.1% sodium azide as a preservative.
- **Substrate (1 bottle, 75 ml):** 5-bromo-4-chloro-3-indolyl-phosphate (BCIP) and nitroblue tetrazolium (NBT) in a buffered solution.

- **Blotting Powder (1 packet, 10 g):** Nonfat dry milk

- **Incubation Trays:** 1 or 3, 10 well trays.

© Tween- 20 is a registered trademark of Imperial Chemical Industries

MATERIALS REQUIRED BUT NOT SUPPLIED

- Rocking platform
- Aspirator with disinfectant trap
- Disposable gloves
- Calibrated adjustable micropipettes
- Graduated cylinders and assorted beakers
- Timer
- 1% sodium hypochlorite as disinfectant. May be prepared from household bleach
- Distilled or deionized water
- Tweezers or forceps

STORAGE AND PROPER KIT HANDLING

- To avoid microbial contamination store kit reagents tightly capped and at 2-8° C when not in use
- Do not use kit beyond its expiration date
- Use reagent grade water for diluting kit reagents
- Reusing trays is not recommended
- Keep all reagents tightly capped and refrigerated when not in use
- Allow strips to reach room temperature before opening tube. Close tube immediately after removing strips for use.
- Allow reagents to reach room temperature before use
- Do not touch strips with fingers. Use forceps when removing strips from tube.

PRECAUTIONS

- Prior to performing the assay, carefully read all instructions.
- Handle assay specimens, strips, non-reactive and reactive controls as if capable of transmitting infectious agents. Although the virus proteins on the nitrocellulose strips have been inactivated, the reactive control has been heat inactivated and the non-reactive control has been found negative for HIV, HCV and Hepatitis B surface antigen, no test can offer assurance that products derived from human or non-human primate blood will not transmit infectious agents.
- Use Universal precautions when performing this assay (MMWR, June 24, 1988, Vol. 37, No. 24, pp. 377-382, 387-388).
- Disposal: When testing potentially-infectious specimens, adhere to all applicable local, state and federal regulations regarding the disposal of biohazardous materials.
- Kit components contain sodium azide as a preservative. If disposed of through a sink or other plumbing system, flush with generous amounts of water to prevent accumulation of potentially explosive compounds. See "Safety Management No. CDC-22, "Decontamination of Laboratory Sink Drains to Remove Azide Salts" (Centers for Disease Control, Atlanta, GA, April 30, 1976).

PREPARATION OF REAGENTS

Assay may be performed as either an overnight or a rapid procedure (3.5 hour total time). The overnight protocol provides additional sensitivity.

1. 1X WASH BUFFER

Dilute 1 volume of 20X WASH BUFFER with 19 volumes of distilled or deionized water. Mix well. Diluted wash buffer may be stored at room temperature for 1 month.

2. 1X WORKING BLOTTING BUFFER

1X WORKING BLOTTING BUFFER should be **prepared fresh prior to use**. Dissolve 1.0 g of NONFAT DRY MILK in 20 ml of BLOTTING BUFFER. Mix thoroughly to dissolve the powder. Total volume required listed in table below.

3. 1X WORKING CONJUGATE

1X WORKING CONJUGATE should be **prepared fresh prior to use**. Dilute CONJUGATE 1:1000 in 1X WORKING BLOTTING BUFFER. Example; Add 10 µl conjugate to 10 ml of 1X WORKING BLOTTING BUFFER.

| Amount of Reagents Required (ml) for Various Number of Strips | | | | | | |
|---|----|----|-----|-----|-----|-----|
| No. of Strips: | 3 | 5 | 10 | 15 | 20 | 30 |
| 1X Wash Buffer | 36 | 60 | 120 | 180 | 240 | 360 |
| 1X Working Blotting Buffer | 12 | 20 | 40 | 60 | 80 | 120 |
| 1X Working Conjugate | 6 | 10 | 20 | 30 | 40 | 60 |

TEST PROCEDURE

Allow all reagents to reach room temperature before use. Avoid splashing while handling incubation tray. Do not handle samples or sample loaded pipette tips over uncovered trays. Splashing or aerosols can result in cross contamination of sample wells. Remove lid carefully to avoid condensate from falling into sample wells.

1. Using forceps, remove enough strips from the tube for each sample and for reactive and non-reactive controls. Place numbered side up into each well.
2. Add 2.0 ml 1X WORKING BLOTTING BUFFER to each well, followed by 20 µl of sample or control sera.
3. Cover the tray and incubate 16-20 hrs (overnight method) at room temperature (25±3°C) or two hours at room temperature (rapid method) on a rocking platform.
4. Carefully remove cover avoiding splashing or mixing of samples. Aspirate each well into disinfectant trap.
5. Wash each strip 3 times with 2.0 ml 1X WASH BUFFER allowing 5 minutes on the rocking platform between each wash.
6. Add 2.0 ml 1X WORKING CONJUGATE to each well. Cover tray and incubate on a rocking platform at room temperature for 60 minutes (±5 minutes).
7. Aspirate each well. Wash strips as described in **Step 5**.
8. Add 2.0 ml of SUBSTRATE to each well and incubate at room temperature on a rocking platform for up to 15 minutes.

9. Aspirate SUBSTRATE from each well and stop the reaction by rinsing each strip several times with distilled or deionized water.
10. Using forceps, place the strips onto absorbant paper towel, cover with another towel and allow to dry. Score strips as soon as possible after the assay is complete. Strips do not have to be dry prior to scoring. Strips will eventually fade with exposure to light and air. For best results, strips can be mounted and stored between clear plastic sheets. Do not place adhesive tape over bands as this will cause them to fade.

TEST VALIDITY

The **REACTIVE** and **NON-REACTIVE CONTROL** must be included in each run.

1. **NON-REACTIVE CONTROL:** Viral specific bands should not be observed on the nitrocellulose strip used to test the NON-REACTIVE CONTROL. The serum control band should be visible as in **Figure 1b**. The test should be considered invalid and repeated if the serum control band is not visible on the strip.
2. **REACTIVE CONTROL:** All major molecular weight bands must be visible on the nitrocellulose strip used to test the REACTIVE CONTROL. These bands are p17, p27, p31, gp41, p55, p66, gp120 and gp160. Other virus specific bands may also be present. The serum control band should be visible. **Figure 1a** provides a guide to the relative positioning of bands observed with the REACTIVE CONTROL.

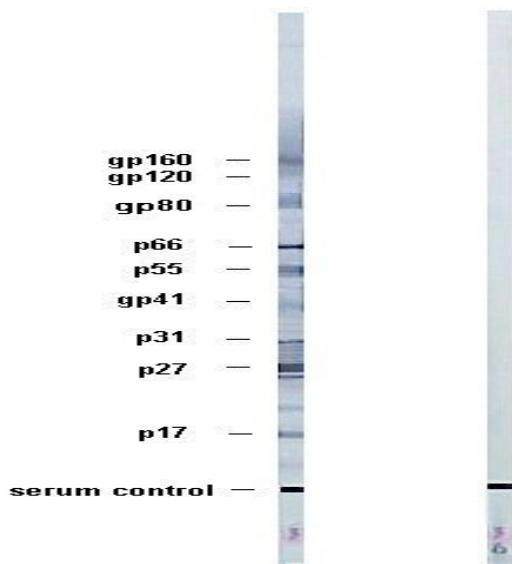


Fig. 1a

Fig. 1b

INTERPRETATION OF RESULTS

The presence or absence of antibodies to SIV in a specimen, and the identity of such antibodies is determined by comparison of each nitrocellulose strip to the **REACTIVE CONTROL AND NON-REACTIVE CONTROL** tested with that run.

The interpretation process is three-step:

1. Establish that the serum control band is present, assuring the sample was added to the well and that the assay was performed properly. The test should be considered invalid and repeated if the serum control is not visible.
2. Assign each band present a molecular weight based on its position. Use the **REACTIVE CONTROL** strip in side by side comparison with the sample strip to facilitate this step. Use the illustration on page 5 to aid in band identification and assignment.
3. Interpretation is based on the combination of bands present.

The major SIV gene products used in the interpretation are:

| GENE PRODUCTS | May also be known as* |
|--|-----------------------|
| <i>gag</i> (core antigens) | |
| p17 | p15, p16 |
| p27 | p24, p26, p28 |
| p55 | p56, p58 |
| <i>pol</i> (endonuclease polymerase antigens) | |
| p31 | p34, p36 |
| p66 | p68 |
| <i>env</i> (envelope antigens) | |
| gp41(transmembrane) | gp36, gp34 |
| gp80 (dimmer of gp41) | |
| gp120(surface) | gp105, gp125 |
| gp160(oligomer* of gp41) | gp140 |

*Trimers and/or tetramers⁽¹³⁾

In studies evaluating the ZeptoMetrix Western Blot, a full spectrum of reactivity was observed against gag, pol and env proteins with non-human primate serum or plasma specimens containing antibodies to SIV strains mac, agm, sm, and mne as well as human and non-human primate serum and plasma containing antibodies to HIV-2.

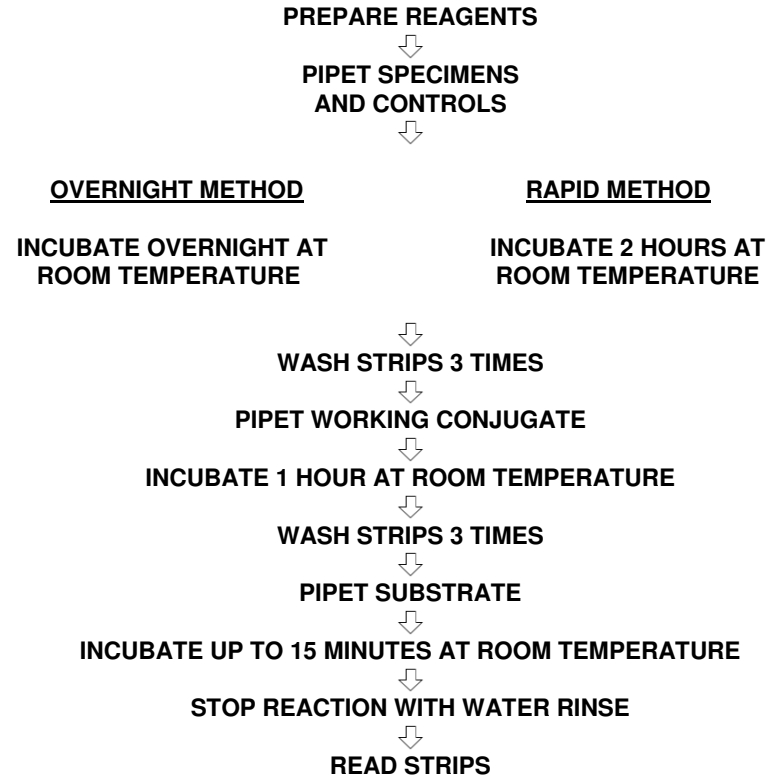
LIMITATIONS OF THE PROCEDURE

Optimal assay performance requires adherence to the procedures described in this insert. Deviations from the procedure may cause aberrant results. Highly reactive specimens may cause overdevelopment of the strip making interpretation of the bands difficult due to strong background staining. Such specimens may be diluted and retested. A negative blot result does not exclude infection with SIV. Occasionally, reactivity of specimens to bands that do not correspond to SIV antigens may occur. This may be due to antibodies cross-reactive with cellular proteins found in the host cells used to propagate the SIV virus.

REFERENCES

1. Beer BE, Bailes E, Sharp PM, Hirsch VM, 1999. Diversity and Evolution of Primate Lentiviruses. WWW document. URL <http://hiv-web.lanl.gov/REVIEWS/Beer99/Beer.html>
2. Robertson DL, 1998. The Evolution of the AIDS Viruses. WWW document. URL http://igs-server.cnrs-mrs.fr/anrs/phylogenetics/hiv_evolution.doc.html
3. Chen Z, Luckay A, Sodora DL, Telfer P, Reed P, Gettie A, Kanu JM, Sadek RF, Yee J, Ho DD, Zhang L, Marx PA, 1997. Human Immunodeficiency Virus Type 2 (HIV-2) Seroprevalence and Characterization of a Distinct HIV-2 Genetic Subtype from the Natural Range of Simian Immunodeficiency Virus-Infected Sooty Mangabeys. *Journal of Virology*, 71(5):3953-3960.
4. Chen Z, Telfer P, Gettie A, Reed P, Zhang L, HO DD, Marx PA, 1996. Genetic Characterization of New West African Simian Immunodeficiency Virus SIV_{sm}: Geographic Clustering of Household-Derived SIV Strains with Human Immunodeficiency Virus Type 2 Subtypes and Genetically Diverse Viruses from a Single Feral Sooty Mangabey Troop. *Journal of Virology*, 70(6):3617-3627.
5. Marx PA, Li Y, Lerche NW, Sutjipto S, Gettie A, Yee J, Brotman BH, Prince AM, Hanson A, Webster RG, Desrosiers RC, 1991. Isolation of a Simian Immunodeficiency Virus Related to Human Immunodeficiency Virus Type 2 from a West African Pet Sooty Mangabey. *Journal of Virology*, 65(8):4480-4485.
6. Gao F, Yue L, Robertson DL, Hill SC, Hui H, Biggar RJ, Neequaye AE, Whelan TM, Ho DD, Shaw GM, Sharp PM, Hahn BH, 1994. Genetic Diversity of Human Immunodeficiency Virus Type 2: Evidence for Distinct Sequence Subtypes with Differences in Virus Biology. *Journal of Virology*, 68(11):7433-7447.
7. Yee JL, Jennings MB, Lowenstine LJ, Lerche NW, 1993. Performance Characteristics of HIV-2 Serology Reagents on Blood From SIV/HIV-2 Infected Monkeys. Abstract 52 presented at the 11th Annual Symposium on Non-human Primate Models for AIDS, September 19-22, 1993.
8. Tsang VC, Peralta JM, and Simons, 1983. Enzyme-linked Immuno-electrotransfer Blot Techniques (EITB) for Studying the specificities of Antigens and Antibodies Separated by Gel Electrophoresis. *Methods in Enzymology* 92:377-391.
9. Towbin H, Staehlin T, and Gordon J, 1979. Electrophoretic Transfer of Proteins from Polyacrylamide Gels to Nitrocellulose Sheets: Procedure and Some Applications. *Proc. Natl. Acad. Sci.*, 76:4350-4354.
10. Desrosiers RC, 1990. The Simian Immunodeficiency Viruses. *Annual Review of Immunology*, 8(2):557-78.
11. Kanki PJ, McLane MF, King NW, Letvin N L, Hunt RD, Sehgal P, Kanki Daniel MD, Desrosiers RC, Essex M, 1985. Serologic Identification and Characterization of a Macaque T-Lymphotropic Retrovirus Closely Related to HTLV-III. *Science* 228(4704):1199-201.
12. Daniel MD, Letvin N, King NW, Kannagi M, Sehgal PK, Hunt RD, Kanki PJ, Essex M., Desrosiers RC. 1985. Isolation of T-Cell Tropic HTLV-III-Like Retrovirus from Macaques. *Science* 228(4704):1201-4.
13. Parekh BS, Pau C-P, Granade TC, Rayfield M, De Cock KN, Gayle H, Schochetman G, George JR (1991) Oligomeric nature of transmembrane glycoproteins of HIV-2 : procedures for their efficient dissociation and preparation of Western blots for diagnosis. *AIDS* 5:1009-1013.

PROCEDURAL FLOW CHART



ZeptoMetrix Corporation
872 Main Street
Buffalo, New York 14202

Office Phone: 716-882-0920
Fax: 716-882-0959
Customer Service: 800-274-5487
www.zeptometrix.com
e-mail : support@zeptometrix.com
custserv@zeptometrix.com