

anti-Prox1

Overview

Catalog #	11-002
Unit Size	0.2 ml
Applications	W IHC(F/P) IF
Host	rabbit



Description:

Prox1 is a homeobox gene and acts as a master switch for lymphatic endothelial phenotype. Expression of Prox1 in blood endothelial cells induces expression of other lymphatic marker genes. Together with podoplanin, Prox1 can be used to reliably distinguish lymphatic vessels from blood vessels. This rabbit polyclonal antibody against Prox1 works well for immunohistochemistry with **formalin-fixed paraffin embedded sections** (10min boiling in Citrate buffer pH6.0 to retrieve antigen). Therefore, it will be a useful tool to study lymphatic vessel density in and around human tumors.

Host Species: Rabbit

Buffer: 50% Glycerol

Formulation: Serum

Stability: The antibody is stable at -20°C for one year.

Cross-Reactivity: The antibody works equally well against human, mouse, rat and zebrafish Prox1. Other species not tested.

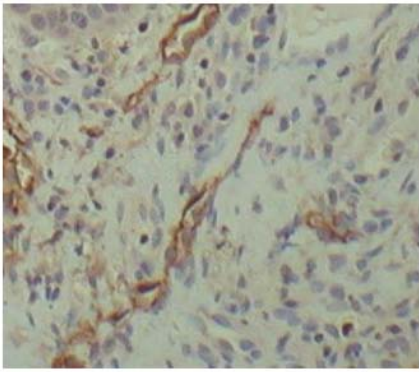
Specificity: The antibody will detect Prox1 in the nucleus of lymphatic endothelial cells by immunostaining or immunohistochemistry. It works well with paraffin sections. A boiling step is recommended when staining paraffin embedded sections. The antibody also works in Western blotting.

Immunostaining/Immunohistochemistry: Use 1:500 to 1:1000 dilution

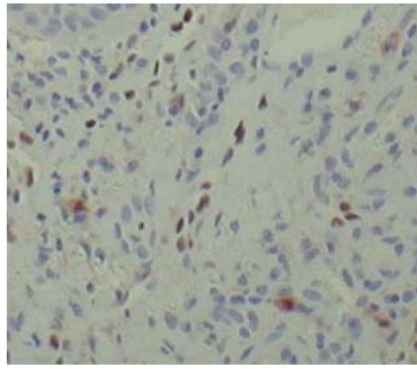
Western blotting: Use 1:1000

Usage: This antibody is offered for research use only. **Not for human use!**

Human Oral Submucosa Paraffin Embedded Section



11-003 Anti-podoplanin



11-002 Anti-Prox1

GENTAUR