

>> **Other Products >**

For more information:

LPS (Lipopolysaccharide) Extraction Kit

▣ CAT. 17141 (100 rxn.)

[We are pleased to offer unpublished higher discounts on large volume purchases.]

LPS (lipopolysaccharide) triggers a cascade of immunostimulatory and toxic pathophysiological events, including peripheral vascular collapse by releasing endotoxin initiate septic shock.


Generally, the hot phenol-water extraction method is usually used for extracting LPS from gram-negative bacteria. However, it is complicated and takes long time to extract.

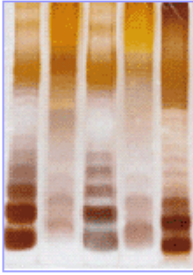
The iNtRON LPS Extraction Kit is the first commercially product for extracting LPS from bacteria. LPS Extraction Kit is designed for rapid and convenient extraction of LPS from bacterial cells.

::: LPS (Lipopolysaccharide) Extraction Kit CAT. 17141

❖ **LPS Extraction from Bacteria**
❖ **Distribution of Bacteria by Patterns of the Carbohydrate Chain Length**
LPS (lipopolysaccharide) triggers a cascade of immunostimulatory and toxic pathophysiological events, including peripheral vascular collapse by releasing endotoxin initiate septic shock. The iNtRON LPS Extraction Kit is the first commercially product for extracting LPS from bacteria. LPS Extraction Kit is designed for rapid and convenient extraction of LPS from bacterial cells.


LPS Pattern Analysis
PAGE & Silver Staining





Bacteria Harvest
↓
Add **Lysis Buffer**
↓
Add Chloroform
(not supplied)
↓
Centrifuge
↓
Add **Purification Buffer**
↓
Centrifuge
↓
Wash Pellet / Dissolve

Just < 60 min
Very Convenient



- ▣ LPS extraction from bacterial cells
- ▣ Distribution of bacteria by patterns of the carbohydrate chain length
- ▣ Immunostimulatory effect of the extracted LPS from bacteria

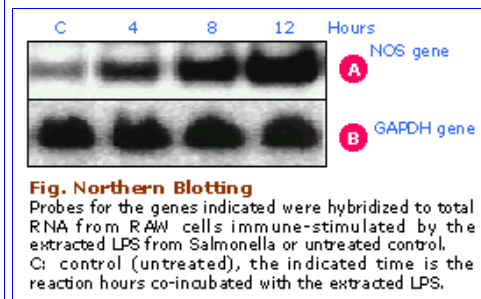
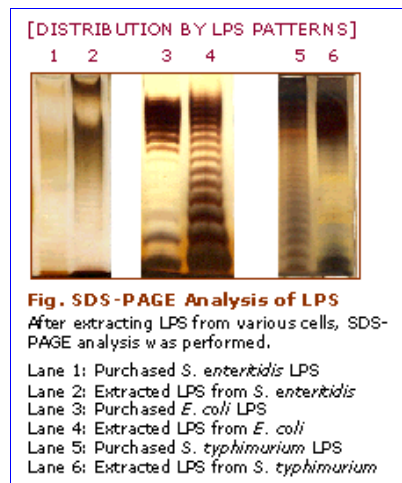
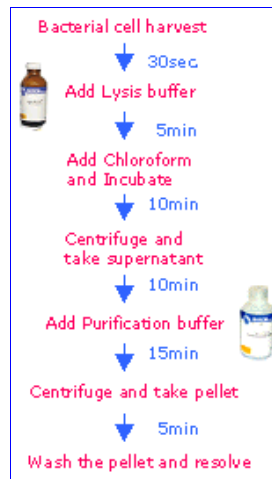
- ▣ Very simple and convenient steps
- ▣ Rapid reaction time (within 60 minutes)

Format : Soution type (Lysis buffer and Purification buffer)

Sample source: Bacterial cells

Sample size: The yield of LPS extraction is proportional to volume of culture. The yield of LPS is at its maximum when 5ml of culture is used. The optimal culture volume is 5ml at OD600 of 0.8-1.2.

Prep. time: <60 minutes including a lysis step
Rehydration volume: 50-200µl



Included in this kit
 ; Reagents, and a manual.

