

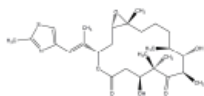
PRODUCT: Epothilone B

ALTERNATE NAME: EPO-906; EpoB; Patupilone

CATALOG #: 2012-1, 5

AMOUNT: 1 mg, 5 mg

STRUCTURE:



MOLECULAR FORMULA: C₂₇H₄₁NO₆S

MOLECULAR WEIGHT: 507.68

CAS NUMBER: 152044-54-7

APPEARANCE: White to off-white solid

SOLUBILITY: DMSO (40 mg/ml) or EtOH (40 mg/ml)

PURITY: ≥98% by HPLC

STORAGE: Store at -20 °C. Protect from light.

DESCRIPTION: A macrolide anticancer agent. Similar to paclitaxel (Cat. No. 1567-25), epothilone B induces microtubule polymerization and stabilizes microtubules against depolymerization conditions. In addition to promoting tubulin polymerization and stabilization of microtubules, this agent is cytotoxic for cells overexpressing P-glycoprotein, a characteristic that distinguishes it from the taxanes. Also induces G₂-M cell cycle arrest (EC₅₀ = 3 - 92 nM).

RELATED PRODUCTS:

Betulinic Acid (Cat. No. 1552-25)
Bexarotene (Cat. No. 1575-5, 50)
Capecitabine (Cat. No. 1741-100, 1000)
Carboplatin (Cat. No. 1553-100)
Cisplatin (Cat. No. 1550-100,1000)
Daunorubicin.HCl (1524-10,50,500)
Doxorubicin HCl (Cat. No. 1527-5)
(-)-Epigallocatechin gallate (Cat. No. 1841-50)
Fludarabine Phosphate (Cat. No. 1763-10, 50)
Gemcitabine Hydrochloride (Cat. No. 1759-25, 100)
Genistein (Cat. No. 1533-10)
Nedaplatin (Cat. No. 1576-5)
Nitric Oxide Colorimetric Assay Kit (Cat. No. K263-100)
Nitric Oxide Fluorometric Assay Kit (Cat. No. K252-100)
Oxaliplatin (Cat. No. 1577-25)
Piperlongumine (Cat. No. 1919-10, 50)
Paclitaxel (Cat. No. 1567-25)
Tamoxifen Citrate (Cat. No. 1551-1000)

HANDLING: Do not take internally. Wear gloves and mask when handling the product! Avoid contact by all modes of exposure.

USAGE: FOR RESEARCH CH USE ONLY! Not to be used in humans

GENT