

---

# SIRT3 Antibody

SIRT3

*SIRT3 (sirtuin (silent mating type information regulation 2 homolog) 3 (S. cerevisiae))*

**CATALOG NO.: 27-579**

Antibody is lyophilized in PBS buffer with 2% sucrose. Add 50 µl of distilled water. Final antibody concentration is 1 mg/ml.

**HOST:**

Rabbit

**CLONALITY:**

Polyclonal

**IMMUNOGEN:**

Antibody produced in rabbits immunized with a synthetic peptide corresponding a region of human SIRT3.

**PROTEIN ACCESSION NUMBER(S) :**

NP\_001017524

**CALCULATED MOLECULAR WEIGHT:**

28kDa, 44kDa

**SPECIES REACTIVITY:**

H

**TESTED APPLICATION(S):**

E, WB, IHC

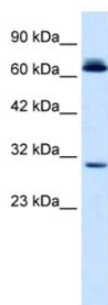
**APPLICATION:**

SIRT3 antibody can be used for detection of SIRT3 by ELISA at 1:62500. SIRT3 antibody can be used for detection of SIRT3 by western blot at 0.5 µg/ml, and HRP conjugated secondary antibody should be diluted 1:50,000 - 100,000.

**PURIFICATION:**

Antibody is purified by peptide affinity chromatography method.

**BUFFER:**



Western blot analysis of SIRT3 in HepG2 Cell Lysate using SIRT3 antibody at 0.5  $\mu\text{g/ml}$  (12% gel).

#### **STORAGE:**

For longer periods of storage, store SIRT3 antibody at  $-20^{\circ}\text{C}$ . Avoid repeat freeze-thaw cycles.

#### **REFERENCE:**

Onyango, P., et al., (2002) Proc. Natl. Acad. Sci. U.S.A. 15 99(21), 13653-8.

#### **USER NOTES:**

When working with antibodies optimal dilutions and concentrations should be determined by the end user for each application. The information provided is a guideline for antibody use. As with all ProSci antibodies, **this antibody is for research use only.**