

PARP Antibody (Clone 10H)

CATALOG #:	3000-100
AMOUNT:	100 µg
HOST:	Mouse
ISOTYPE:	IgG3κ
IMMUNOGEN:	Poly(ADP-ribose) mixed with methylated bovine serum albumin
FORMULATION:	1 mg/ml of IgG purified from mouse ascites by protein A chromatography. Prepared in 20 mM Tris, pH 7.4, 150 mM NaCl, 1% BSA and 0.02% sodium azide.
SPECIES REACTIVITY:	All
STORAGE CONDITIONS:	Stable for 1 year from date of shipment when stored at -20 or -70°C. Stable for 1 month at 4°C. Avoid freeze/thaw cycles.

DESCRIPTION:

PARP, a 116 kDa nuclear poly (ADP-ribose) polymerase, is a highly conserved nuclear enzyme implicated in DNA repair and in the apoptosis response of cells. This protein can be cleaved by many caspases *in vitro* and is one of the main cleavage targets of caspase-3 *in vivo*. The cleavage occurs between ASP214 and Gly 215, which separates PARP's N-terminal DNA binding domain (24 kDa) from its C-terminal catalytic domain (89 kDa). It has been shown that cleavage of PARP facilitates cellular disassembly and inhibition of PARP cleavage attenuates apoptosis *in vitro*.

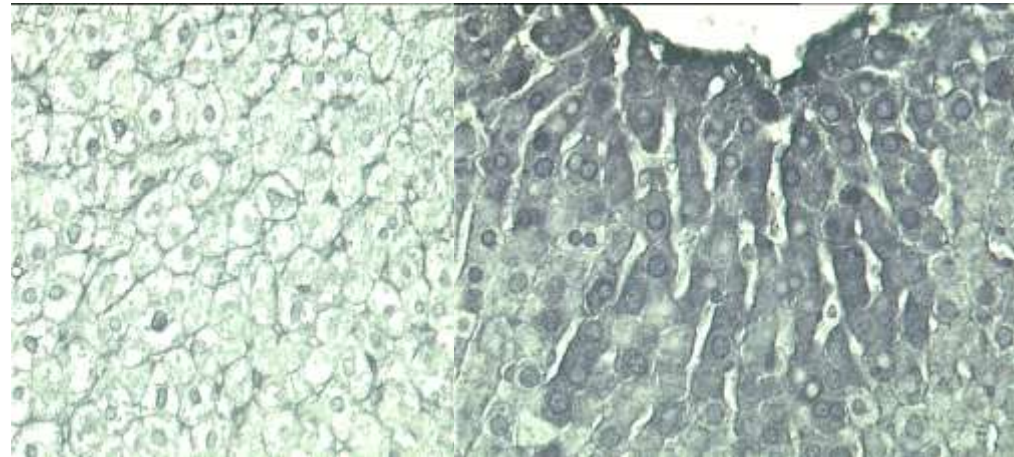
SPECIFICITY:

Recognizes poly(ADP-ribose) polymer (pADPr) synthesized by a variety of poly(ADP-ribose) polymerases (PARP)-related enzymes including PARP-1, -2, -3, tankyrase, vPARP, sPARP and others. Does not recognize full length PARP1 (116 kDa), as well as the large fragment (89 kDa) of PARP1 resulting from caspase cleavage.

APPLICATION: Immunocytochemistry : 5-20 µg/ml; Western Blot (10 µg/ml using colorimetric methods; <2 µg/ml for ECL); Immunoprecipitation and ELISA

Note: *This information is only intended as a guide. The optimal dilutions must be determined by the user*

FOR RESEARCH USE ONLY! Not to be used on humans.



CONTROL

DEN

Poly(ADP-ribose) staining of rat liver:

Rats were injected i.p. with diethylnitrosamine (200 mg/kg), and the livers were removed and rapidly processed 10 hr later, at peak polymer induction (DEN). Control was untreated liver. Tissue were stained using anti-pADPr clone 10H.

RELATED PRODUCTS:

- ABT-88 (Cat. No. 1620-1,5)
- DPQ (Cat. No. 1899-1, 5)
- DR2313 (Cat. No. 1771-1, 5)
- PARP Antibody (Cat. No. 3002-100)
- PARP Blocking peptide (Cat. No. 3002BP-50)
- PARP Antibody (Cat. No. 3023-100)
- PARP (cleaved) Antibody (Cat. No. 3140-100)
- PARP (cleaved) Antibody (Cat. No. 3141-100)
- PARP (cleaved) Antibody (Cat. No. 3142-100)
- PARP-1, human recombinant (Cat. No. 4992-50)