

DYKDDDDK Tag Antibody (Clone IE6)

CATALOG #:	3022-100
SIZE:	100 µg
HOST:	Mouse
ISOTYPE:	IgG2b
CLONE#	IE6
PURIFICATION:	Protein G
IMMUNOGEN:	Synthetic peptide (DYKDDDDK) coupled to KLH

ANTIBODY FORMULATION:

1X PBS with 50% glycerol at a concentration of 0.5 mg/ml

STORAGE CONDITIONS:

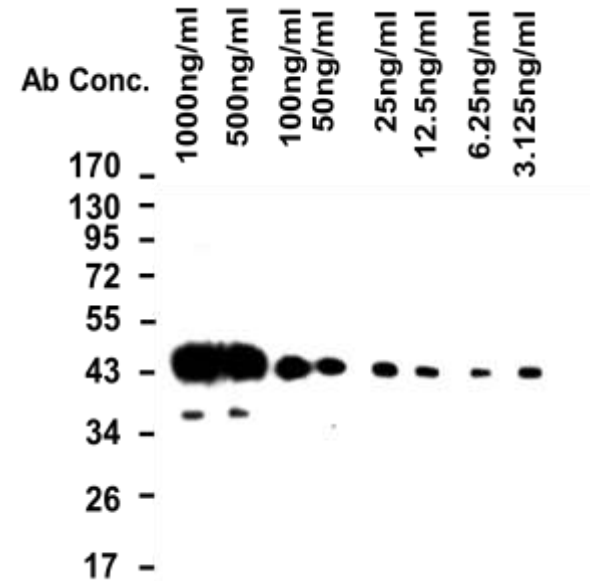
Store at -20°C. Aliquot when required. Avoid repeated freeze/thaw cycles.

Background:

Epitope tags have application in the labeling, isolation and detection of proteins by Western Blot, immunoprecipitation and immunostaining methods. Their small size tends not to affect the proteins biochemical properties. The DYKDDDDK Tag Antibody is a high-affinity mouse monoclonal antibody that can be used to detect DYKDDDDK-tagged proteins. It can detect N-terminal, C-terminal and internal tagged fusion proteins. This antibody recognizes the same epitope recognized by Sigma's anti-FLAG® antibodies.

APPLICATION AND USAGE : The DYKDDDDK Tag has been used Western blot (suggested use: 0.5 µg/ml) and Immunoprecipitation. However, the optimal conditions should be determined individually.

FOR RESEARCH USE ONLY! Not to be used on humans.



Primary Antibody : Anti-Flag, 0.5 mg/ml, shown: 1000 ng/ml-3.125 ng/ml

Secondary Antibody : goat anti-mouse IgG HRP 1:5000

Develop the blots : 2 min

Expose light film : 5 min

RELATED PRODUCTS:

- His-Tag Monoclonal Antibody (Cat# 3646-100)
- Myc-Tag Polyclonal Antibody (Cat# 3995-100)
- Myc-Tag Blocking Peptide (Cat# 3995BP-50)
- HA-Tag Monoclonal Antibody (Cat# 3996-200)
- HA-Biotin Monoclonal Antibody (Cat# 3996B-100)
- HA-FITC Monoclonal Antibody (Cat# 3996F-100)
- GST-Tag Polyclonal Antibody (Cat# 3997-100)
- His-Tag Polyclonal Antibody (Cat# 3998-100)
- His-Tag Blocking Peptide (Cat# 3998BP-50)