

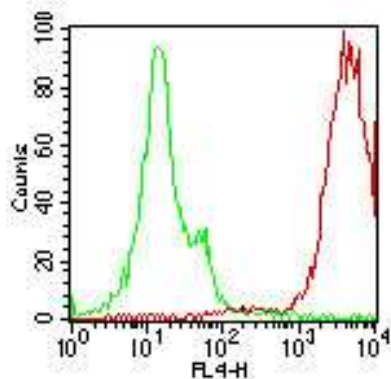
## SSEA-4 Antibody, Alexa Fluor® 647 conjugate (Clone MC-813-70)

<b>CATALOG #:</b>	3078-25T
<b>AMOUNT:</b>	25 tests
<b>HOST:</b>	Mouse
<b>ISOYPE:</b>	Mouse IgG3, Kappa
<b>PURIFICATION:</b>	Protein G chromatography
<b>SPECIES REACTIVITY:</b>	Chicken, Dog, Human, Monkey, Mouse, Rabbit
<b>STORAGE CONDITIONS:</b>	Store at 4°C. Do not freeze. LIGHT SENSITIVE.
<b>FORMULATION:</b>	25 tests in 250 µl PBS containing 0.05% BSA and 0.05% sodium azide.
<b>FORMAT:</b>	Alexa Fluor® 647
<b>CLONE:</b>	MC-813-70

**DESCRIPTION:** SSEA-4 specific antibody, clone MC-813, is reactive with Stage-Specific Embryonic Antigen-4, a carbohydrate antigen expressed on human teratocarcinoma cells (EC), embryonic stem cells (ES) and embryonic germ cells. It is also expressed on a subset of mesenchymal stem cells, erythrocytes, the erythroleukemic myeloid cell line K562, unfertilized oocytes and early cleaved stage oocytes.

**ANTIGEN:** Human embryonal carcinoma cell line 2102Ep

**APPLICATION AND USAGE:** Flow (Cell Surface): 10 µl/10<sup>6</sup> cells (0.5 µg), IF/ICC



Cell surface flow cytometric analysis of SSEA-4 on human 2102Ep cells using 10 µl/10<sup>6</sup> cells of 3078-25T (green histogram represents isotype control; red represents SSEA-4 antibody).

**FOR RESEARCH USE ONLY! Not to be used on humans.**

### RELATED PRODUCTS:

- SSEA-1 Monoclonal Antibody (Cat. No. 3063-25)
- SSEA-1 Antibody, Alexa Fluor® 488 conjugate (Cat. No. 3064-25T)
- SSEA-3 Monoclonal Antibody (Cat. No. 3065-25)
- SSEA-3 Antibody, Alexa Fluor® 488 conjugate (Cat. No. 3068-25T)
- SSEA-4 Monoclonal Antibody (Cat. No. 3074-25)
- TRA-1-60 Monoclonal Antibody (Cat. No. 3079-25)
- TRA-1-60 Antibody, Alexa Fluor® 488 conjugate (Cat. No. 3081-25T)
- TRA-1-81 Monoclonal Antibody (Cat. No. 3082-25)
- TRA-1-81 Antibody, Alexa Fluor® 647 conjugate (Cat. No. 3083-25T)