

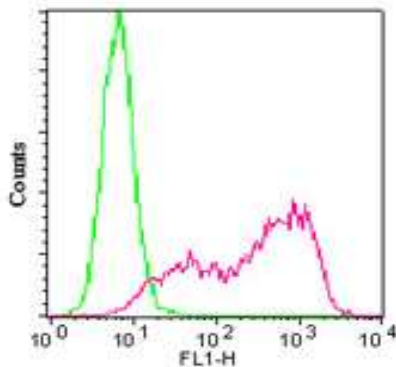
TRA-1-60 Antibody, Alexa Fluor® 488 conjugate (Clone TRA-1-60-R)

CATALOG #:	3081-25T
AMOUNT:	25 tests
HOST:	Mouse
ISOYPE:	Mouse IgM, Kappa
PURIFICATION:	Affinity chromatography
SPECIES REACTIVITY:	Human
STORAGE CONDITIONS:	Store at 4°C. Do not freeze. LIGHT SENSITIVE.
FORMULATION:	25 tests in 250 µl PBS containing 0.05% BSA and 0.05% sodium azide.
FORMAT:	Alexa Fluor® 488
CLONE:	TRA-1-60-R

DESCRIPTION: TRA-1-60 specific antibody, clone TRA-1-60R, reacts with podocalyxin, a sialomucin which is a member of the CD34 family. It is expressed on human teratocarcinoma cells (EC), embryonic stem cells (ES) and germ cells. It is not expressed on differentiated cells. Tra-1-60R is a neuraminidase resistant epitope variant of TRA-1-60. TRA-1-60 expression is proportional to tumor growth.

ANTIGEN: Human embryonal carcinoma cell line 2102Ep cl.2A6

APPLICATION AND USAGE: Flow (Cell Surface): 10 µl/10⁶ cells (0.1 µg), IF/ICC



Cell surface flow cytometric analysis of TRA-1-60 on 10⁶ NCCIT cells using 10 µl (0.1 µg) of 3081-25T. Green histogram represents isotype control; red represents TRA-1-60 antibody.

FOR RESEARCH USE ONLY! Not to be used on humans.

RELATED PRODUCTS:

- TRA-1-60 Monoclonal Antibody (**Cat. No. 3079-25**)
- TRA-1-81 Monoclonal Antibody (**Cat. No. 3082-25**)
- TRA-1-81 Antibody, Alexa Fluor® 647 conjugate (**Cat. No. 3083-25T**)
- SSEA-1 Monoclonal Antibody (**Cat. No. 3063-25**)
- SSEA-1 Antibody, Alexa Fluor® 488 conjugate (**Cat. No. 3064-25T**)
- SSEA-3 Monoclonal Antibody (**Cat. No. 3065-25**)
- SSEA-3 Antibody, Alexa Fluor® 488 conjugate (**Cat. No. 3068-25T**)
- SSEA-4 Monoclonal Antibody (**Cat. No. 3074-25**)
- SSEA-4 Antibody, Alexa Fluor® 647 conjugate (**Cat. No. 3078-25T**)