

TRA-1-81 Antibody (Clone TRA-1-81)

CATALOG #:	3082-25	25 µg
LOT #:	_____	
HOST:	Mouse	
ISOTYPE:	Mouse IgM, κ-chain	
CLONE# :	TRA-1-81	
PURIFICATION:	Affinity purified	
IMMUNOGEN:	Human embryonal carcinoma cell line 2102Ep cl.2A6	
SPECIES REACTIVITY:	Human	

ANTIBODY FORMULATION:

25 µg in 50 µl of PBS containing 0.05% BSA and 0.05% Sodium Azide.

STORAGE CONDITIONS:

Store at -20°C. Avoid repeated freeze-thaw cycles.

DESCRIPTION:

TRA-1-81 specific antibody reacts with podocalyxin, a sialomucin which is a member of the CD34 family. It is expressed on undifferentiated embryonic stem (ES) cells and embryonal carcinoma (EC) cells. TRA-1-81 recognizes a neuraminidase resistant epitope. It is related to adhesion regulation.

APPLICATIONS:

Flow(Cell Surface): 0.5 µg/10⁶ cells

IHC (paraffin): reported in literature

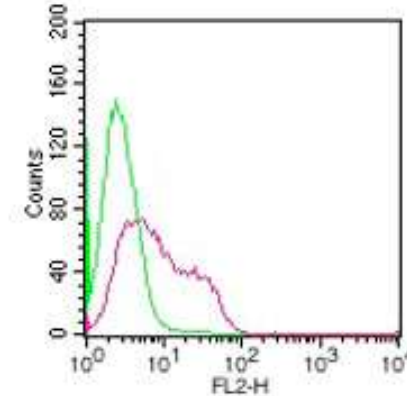
IP: reported in literature

Western blot analysis: reported in literature

REFERENCES:

1. Schopperle, W.M., and DeWolf, W.C. (2007). *Stem Cells* **25**, 723-730
2. Taakeda, T., *et al.* (2000). *Mol. Biol. Cell* **11**, 3219-3232.
3. Badcock, G., *et al.* (1999). *Cancer Res.* **59**, 4715-4719.
4. Andrews, P.W., *et al.* (1984). *Hybridoma* **3**, 347-361.

FOR RESEARCH USE ONLY! Not to be used in human subjects!



Cell surface flow cytometric analysis of TRA-1-81 on NCCIT cells using 0.5 µg of 3082-25 and a PE-conjugated anti-mouse IgM secondary. Green histogram represents isotype control; red represents anti-TRA-1-81 antibody. (cells were not fixed for testing).

RELATED PRODUCTS:

- SSEA-4 Monoclonal Antibody (Cat. No. 3074-25)
- SSEA-1 Monoclonal Antibody (Cat. No. 3063-25)
- SSEA-3 Monoclonal Antibody (Cat. No. 3065-25)
- TRA-1-81 Monoclonal Antibody (Cat. No. 3082-25)