

TRA-1-81 Antibody, Alexa Fluor® 647 conjugate (Clone TRA-1-81)

CATALOG #:	3083-25T
AMOUNT:	25 tests
HOST:	Mouse
ISOYPE:	Mouse IgM, Kappa
PURIFICATION:	Affinity chromatography
SPECIES REACTIVITY:	Human
STORAGE CONDITIONS:	Store at 4°C. Do not freeze. LIGHT SENSITIVE.
FORMULATION:	25 tests in 250 µl PBS containing 0.05% BSA and 0.05% sodium azide.
FORMAT:	Alexa Fluor® 647
CLONE:	TRA-1-81

DESCRIPTION: TRA-1-81 specific antibody, clone TRA-1-81, reacts with podocalyxin, a sialomucin which is a member of the CD34 family. It is expressed on undifferentiated stem cells (ES) and embryonal carcinoma cells (EC). TRA-1-81 recognizes a neuraminidase resistant epitope. It is related to adhesion regulation.

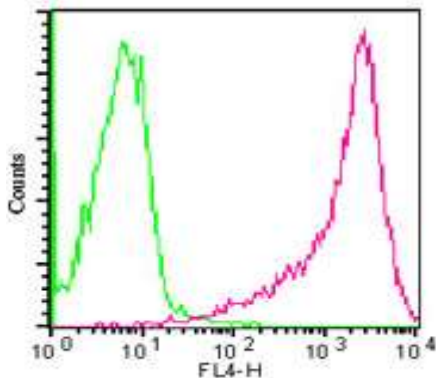
ANTIGEN: Human embryonal carcinoma cell line 2102Ep cl.2A6

APPLICATION AND USAGE: Flow (Cell Surface): 10 µl/10⁶ cells (0.1 µg), IF/ICC

FOR RESEARCH USE ONLY! Not to be used on humans.

RELATED PRODUCTS:

- TRA-1-60 Monoclonal Antibody (Cat. No. 3079-25)
- TRA-1-60 Antibody, Alexa Fluor® 488 conjugate (Cat. No. 3081-25T)
- TRA-1-81 Monoclonal Antibody (Cat. No. 3082-25)
- SSEA-1 Monoclonal Antibody (Cat. No. 3063-25)
- SSEA-1 Antibody, Alexa Fluor® 488 conjugate (Cat. No. 3064-25T)
- SSEA-3 Monoclonal Antibody (Cat. No. 3065-25)
- SSEA-3 Antibody, Alexa Fluor® 488 conjugate (Cat. No. 3068-25T)
- SSEA-4 Monoclonal Antibody (Cat. No. 3074-25)
- SSEA-4 Antibody, Alexa Fluor® 647 conjugate (Cat. No. 3078-25T)



Cell surface flow cytometric analysis of TRA-1-81 in 10⁶ NCCIT cells using 10 µl (0.1 µg) of 3083-25T. Green histogram represents isotype control red represents anti-TRA-1-81 antibody.