

Rat Pancreatic Amylase Antibody (Clone RPA-B5)

CATALOG #:	3102-100
Amount:	100 µg
HOST:	Mouse
ISOTYPE:	IgG2a
CLONE#	RPA-B5
PURIFICATION:	Protein G
IMMUNOGEN:	Recombinant protein (1-492 amino acids of the CDS) expressed in <i>E. coli</i> .
SPECIES REACTIVITY:	Rat

ANTIBODY FORMULATION:

0.5 mg/ml affinity purified mouse monoclonal antibody in phosphate-buffered saline (PBS) containing 30% glycerol, 0.5% BSA, and 0.01% thimerosal.

STORAGE CONDITIONS:

Store at -20°C. Aliquot when required. Avoid repeated freeze/thaw cycles.

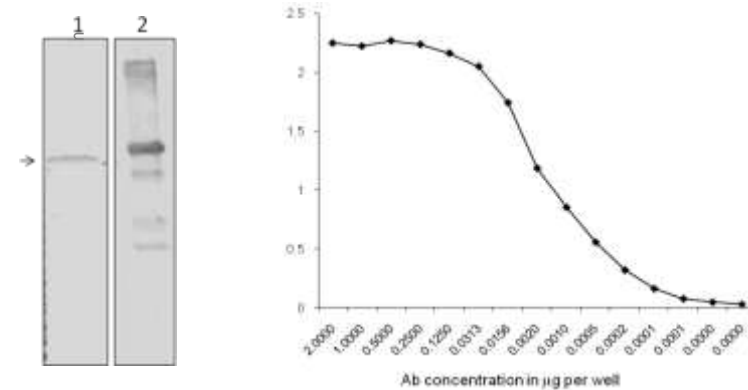
DESCRIPTION:

Pancreatic amylase is a digestive enzyme secreted by pancreas into the intestine. It consists of a single polypeptide chain with a molecular weight of 54 kDa. Measurement of amylase concentrations in serum is a diagnostic test for various pancreatic disorders.

APPLICATIONS :

The antibody can be used in Indirect ELISA (1-2 µg/ml) and detect up to 20 ng of coated antigen or western blotting (~ 4 µg/ml) detects Rat Pancreatic Amylase at the expected molecular weight at ~54 kDa. However, the optimal concentrations should be determined individually

FOR RESEARCH USE ONLY! Not to be used in humans!



Western Blot Analysis (Left) : Pancreatic tissue lysate (lane 1) and recombinant Amylase (lane 2). The antibody detects the Rat Amylase at the expected molecular weight i.e. at ~ 54 kDa in the pancreatic lysate and recombinant protein at ~ 60 kDa.

Indirect ELISA (Right): Serial dilution of the antibody, starting with 2 µg/well was done to check for the affinity. 1 µg of coated antigen can be sensitively detected by anti-rat Pancreatic Amylase antibody, clone B5 used at 30 pg/well concentration.

RELATED PRODUCTS:

- GLP-1 monoclonal antibody
- C-peptide monoclonal antibody
- Phospho-IRS (Ser616) monoclonal antibody
- PYY3-36 monoclonal antibody
- Proinsulin monoclonal antibody