

GLP-1 Antibody (Clone HGL-B5)

CATALOG #:	3104-100
Amount:	100 µg
HOST:	Mouse
ISOTYPE:	IgG1
CLONE#	HGL-B5
PURIFICATION:	Protein G
IMMUNOGEN:	Peptide (entire protein, 31 amino acids)
SPECIES REACTIVITY:	Human

ANTIBODY FORMULATION:

100 µg (0.5 mg/ml) affinity purified mouse monoclonal antibody in phosphate-buffered saline (PBS) containing 30% glycerol, 0.5% BSA, and 0.01% thimerosal.

STORAGE CONDITIONS:

Store at -20°C. Aliquot when required. Avoid repeated freeze/thaw cycles.

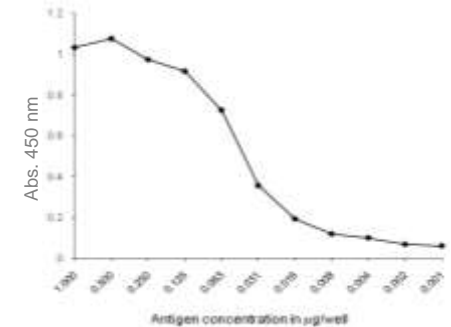
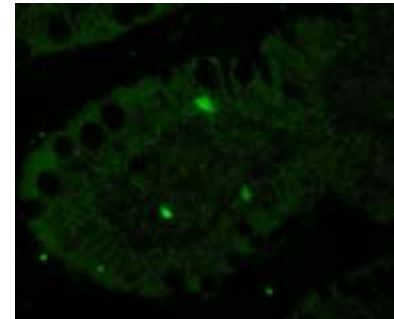
DESCRIPTION:

Glucagon-like peptide-1 (GLP-1) is identified as a gut hormone with potent insulin-releasing activity. GLP-1 possesses several physiological properties that make it a subject of intensive investigation as a potential treatment of diabetes mellitus. In addition, GLP-1 has other biological functions such as reduction of food intake and deceleration of gastric emptying.

APPLICATIONS:

- Indirect ELISA (For detection of antigen; recommended use at 1-2 µg/ml)
- IF (recommended use at 20-40 µg/ml)
- Optimal concentrations should be determined individually

FOR RESEARCH USE ONLY! Not to be used in humans!



Immunofluorescence of Human Distal Ileum Tissue (Left). Antigen retrieval was done with Tris-EDTA, pH9.0 in pressure cooker for 20 minutes. Optimum staining of L-type cells secreting GLP1 was observed.

Indirect ELISA (Right). Anti-human GLP1 antibody was used at 1 µg per well for detection of antigen (peptide, 1 µg serially diluted and coated). The antibody at 10 µg/ml concentration can sensitively detect coated antigen up to 2 ng per well.

RELATED PRODUCTS:

- Rat pancreatic monoclonal antibody
- C-peptide monoclonal antibody
- Phospho-IRS (Ser616) monoclonal antibody
- PYY3-36 monoclonal antibody
- Proinsulin monoclonal antibody