

Proinsulin Antibody (Clone HPI-B5)

CATALOG #:	3106-100
Amount:	100 µg
HOST:	Mouse
ISOTYPE:	IgG1
CLONE#	HPI-B5
PURIFICATION:	Protein G
IMMUNOGEN:	Recombinant full length Insulin expressed in yeast
SPECIES REACTIVITY:	Human, porcine and bovine

ANTIBODY FORMULATION:

100 µg (0.5 mg/ml) affinity purified mouse monoclonal antibody in phosphate-buffered saline (PBS) containing 30% glycerol, 0.5% BSA, and 0.01% thimerosal.

STORAGE CONDITIONS:

Store at -20°C. Aliquot when required. Avoid repeated freeze/thaw cycles.

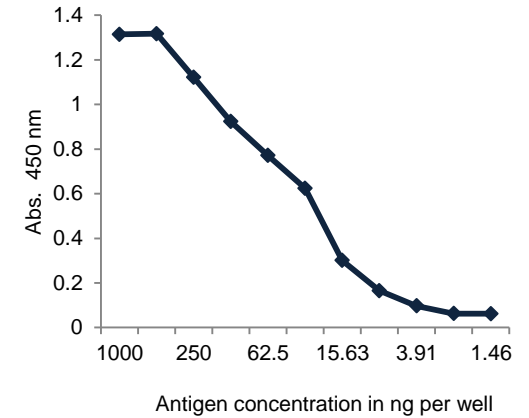
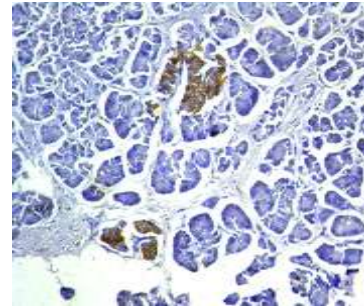
DESCRIPTION:

Proinsulin is a prohormone precursor to Insulin, made by the pancreas in response to increased blood sugar. Proinsulin is 39 amino acids longer than the mature Insulin, of which 4 are completely lost and the remaining 35 forms the C-peptide. The measurement of Proinsulin in serum provides a useful, valuable information for the diagnosis of insulinomas. Proinsulin levels have also been shown to be elevated in non-insulin dependent diabetics (NIDDM), in insulin dependent diabetics (IDDM) and other clinical situations. The antibody recognizes insulin and recombinant proinsulin, but does not react with synthetic C-peptide.

APPLICATIONS:

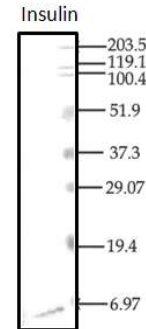
- Indirect ELISA (For detection of antigen; recommended use at 2 µg/ml)
- Western Blot (recommended use at 4 -5 µg/ml)
- IHC (recommended use at 20-40 µg/ml)
- Optimal concentrations should be determined individually

FOR RESEARCH USE ONLY! Not to be used in humans!



Immunohistochemistry of Human Pancreas (Left). Antigen retrieval was done with Tris-EDTA, pH 9.0 in pressure cooker for 20 minutes. Optimum staining of the islet cell was observed.

Indirect ELISA (Right) Serial dilution of the recombinant insulin was done to check the affinity. The antibody used at 10 µg/ml can sensitively detect antigen up to 4 ng per well.



Western Blot Analysis. 10 µg of Insulin was run on 12% SDS-PAGE. The pro-insulin antibody detected a band at ~ 6 kDa.

RELATED PRODUCTS:

- Rat pancreatic monoclonal antibody
- C-peptide monoclonal antibody
- GLP-1 monoclonal antibody
- Phospho-IRS (Ser616) monoclonal antibody
- PYY3-36 monoclonal antibody