

PYY3-36 Antibody (Clone RPY-B12)

CATALOG #:	3107-100
Amount:	100 µg
HOST:	Mouse
ISOTYPE:	IgG1
CLONE#	RPY-B12
PURIFICATION:	Protein G
IMMUNOGEN:	Peptide (full length, 34 amino acids)
SPECIES REACTIVITY:	Rat

ANTIBODY FORMULATION:

100 µg (0.5 mg/ml) affinity purified mouse monoclonal antibody in phosphate-buffered saline (PBS) containing 30% glycerol, 0.5% BSA, and 0.01% thimerosal.

STORAGE CONDITIONS:

Store at -20°C. Aliquot when required. Avoid repeated freeze/thaw cycles.

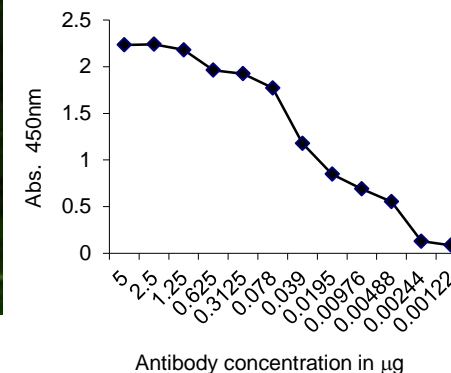
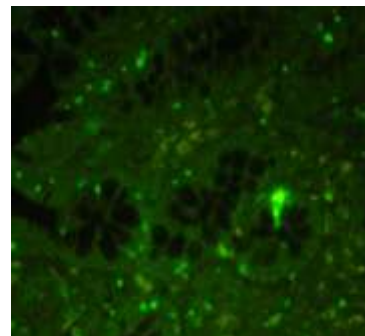
DESCRIPTION:

Peptide YY (PYY), a member of a neuropeptide Y (NPY family) is a 36 AA peptide secreted from the L cells of the gastrointestinal tract in response to food intake. The release of PYY is stimulated by nutrients within the lower small intestine and the colon, which in turn decreases food intake by inhibiting gut motility. It acts as an "ileal brake" to cause a sense of satiety. PYY3-36 is produced by the dipeptidyl peptidase-IV digestion of polypeptide YY (PYY).

APPLICATIONS:

- Indirect ELISA (For detection of antigen; recommended use at 1-2 µg/ml)
- IF (recommended use at 20-40 µg/ml)
- Optimal concentrations should be determined individually

FOR RESEARCH USE ONLY! Not to be used in humans!



Immunofluorescence of Rat Colon Tissue (Left) Antigen retrieval was done with Tris-EDTA, pH 9.0 in pressure cooker. Endocrine cells from the mucosal layer of colon labeled by the antibody display optimum cytoplasmic staining.

Indirect ELISA (Right) Serial dilution of the antibody starting with 5 µg/well was done to check for the affinity. 0.5 µg of coated antigen can be sensitively detected by anti-rat PYY3-36 antibody used at 3 ng/well.

RELATED PRODUCTS:

- Rat pancreatic monoclonal antibody
- C-peptide monoclonal antibody
- GLP-1 monoclonal antibody
- Phospho-IRS (Ser616) monoclonal antibody
- Proinsulin monoclonal antibody