

Akt2, Rabbit pAb

CATALOG #: 3155-100

AMOUNT: 100 µg

LOT #: _____

HOST (ISOTYPE): Rabbit (Ig)

IMMUNOGEN: KLH conjugated synthetic peptide selected from the C-terminal region of human Akt2.

SPECIES REACTIVITY: Human

FORMULATION:

Purified polyclonal antibody supplied in PBS with 0.09% (W/V) sodium azide. This antibody is purified through a protein G column, eluted with high and low pH buffers and neutralized immediately, followed by dialysis against PBS.

STORAGE CONDITIONS:

Maintain refrigerated at 2-8°C for up to 6 months or -20°C for long term storage.

BACKGROUND DESCRIPTION:

AKT2 is a putative oncogenic protein belonging to a subfamily of serine/threonine kinases containing SH2-like (Src homology 2-like) domains. Furthermore, AKT2 was shown to be amplified and overexpressed in 2 of 8 ovarian carcinoma cell lines and 2 of 15 primary ovarian tumors. Overexpression of AKT2 contributes to the malignant phenotype of a subset of human ductal pancreatic cancers. AKT2 is a general protein kinase capable of phosphorylating several known proteins.

BACKGROUND REFERENCES:

1. Vojtek, A.B., et al., Mol. Cell. Biol. 23(13):4417-4427 (2003).
2. Yuan, Z.Q., et al., J. Biol. Chem. 278(26):23432-23440 (2003).
3. Jones, D.T., et al., Blood 101(8):3174-3180 (2003).
4. Brozinick, J.T. Jr., et al., Diabetes 52(4):935-941 (2003).
5. Miyakawa, M., et al., Endocr. J. 50(1):77-83 (2003).

OTHER NAMES:

RAC-beta serine/threonine protein kinase, RAC-PK-beta, Protein kinase Akt-2, Protein kinase B, beta, PKB beta.

SPECIFICITY:

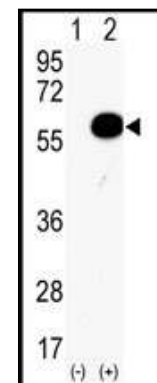
The antibody detects a ~ 56 kDa band, corresponding to the expected molecular mass of Akt2 on immunoblots.

FOR RESEARCH USE ONLY! Not to be used on humans.

APPLICATION (suggested concentration):

The antibody can be used for ELISA (0.25 µg/ml), Western blotting (0.5 – 2.5 µg/ml).

APPLICATION DATA (Calculated MW = 55768 Da):



Western blot analysis of AKT2 (arrow) using rabbit polyclonal AKT2 Antibody (Cat.#3155-100). 293 cell lysates (2 µg/lane) either nontransfected (Lane 1) or transiently transfected with the AKT2 gene (Lane 2) (Origene Technologies).

RELATED PRODUCTS:

Apoptosis Detection Kits & Reagents

- Annexin V Kits & Bulk Reagents
- Caspase Assay Kits & Reagents
- Mitochondrial Apoptosis Kits & Reagents
- Nuclear Apoptosis Kits & Reagents
- Apoptosis Inducers and Set
- Apoptosis siRNA Vectors

Cell Fractionation System

- Mitochondria/Cytosol Fractionation Kit
- Nuclear/Cytosol Fractionation Kit
- Membrane Protein Extraction Kit
- Cytosol/Particulate Rapid Separation Kit
- Mammalian Cell Extraction Kit
- FractionPREP Fractionation System