

## Akt3, Rabbit pAb

**CATALOG #:** 3159-100

**AMOUNT:** 100 µg

**LOT #:** \_\_\_\_\_

**HOST(ISOTYPE):** Rabbit (Ig)

**IMMUNOGEN:** KLH conjugated synthetic peptide selected from the N-terminal region of human Akt3.

**SPECIES REACTIVITY:** Human, (Mouse)

### FORMULATION:

Purified polyclonal antibody supplied in PBS with 0.09% (W/V) sodium azide. This antibody is purified through a protein G column, eluted with high and low pH buffers and neutralized immediately, followed by dialysis against PBS.

### STORAGE CONDITIONS:

Maintain refrigerated at 2-8°C for up to 6 months or -20°C for long term storage.

### BACKGROUND DESCRIPTION:

AKT3 is a member of the AKT, also called PKB, serine/threonine protein kinase family. AKT kinases are known to be regulators of cell signaling in response to insulin and growth factors. They are involved in a wide variety of biological processes including cell proliferation, differentiation, apoptosis, tumorigenesis, as well as glycogen synthesis and glucose uptake. This kinase has been shown to be stimulated by platelet-derived growth factor (PDGF), insulin, and insulin-like growth factor 1 (IGF1).

### BACKGROUND REFERENCES:

1. Xu, Z., et al., Biochem. Biophys. Res. Commun. 312(2):388-396 (2003).
2. Tiwari, G., et al., Mol. Cancer Res. 1(6):475-484 (2003).
3. Brozinick, J.T. Jr., et al., Diabetes 52(4):935-941 (2003).
4. Deregibus, M.C., et al., J. Biol. Chem. 277(28):25195-25202 (2002).
5. Brodbeck, D., et al., J. Biol. Chem. 276(31):29550-29558 (2001).

### OTHER NAMES:

RAC-gamma serine/threonine-protein kinase; RAC-PK-gamma; Protein kinase Akt-3; Protein kinase B, gamma; PKB gamma; STK-2; AKT3.

### SPECIFICITY:

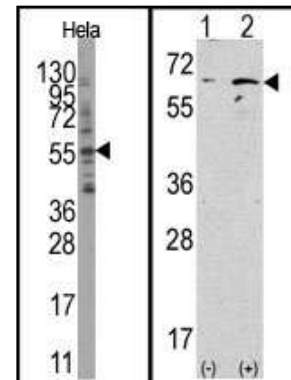
The antibody detects a ~ 56 kDa band, corresponding to the expected molecular mass of Akt3 on immunoblots.

**FOR RESEARCH USE ONLY! Not to be used on humans.**

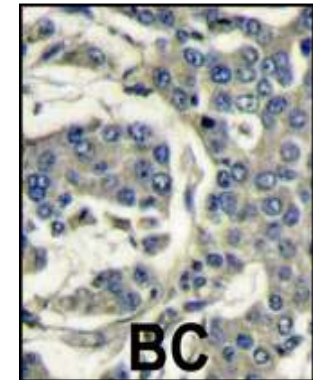
### APPLICATION (suggested concentration):

The antibody can be used for ELISA (0.25 µg/ml), Western blotting (0.5 – 2.5 µg/ml), Immunohistochemistry (2.5 – 5 µg/ml).

### APPLICATION DATA (Calculated MW = 55775 Da):



(LEFT) Western blot analysis of anti-AKT3 Antibody (Cat.#3159-100) in HeLa cell line lysates (35µg/lane). AKT3 (arrow) was detected using the purified pAb (1:30 dilution). (RIGHT) Western blot analysis of anti-AKT3 Antibody in 293 cell line lysates transiently transfected with the AKT3 gene (2µg/lane). AKT3 (arrow) was detected using the purified pAb (1:60 dilution).



Formalin-fixed and paraffin-embedded human breast carcinoma reacted with AKT3 Antibody (Cat.#3159-100), which was peroxidase-conjugated to the secondary antibody, followed by DAB staining.

### RELATED PRODUCTS:

#### Apoptosis Detection Kits & Reagents

- Annexin V Kits & Bulk Reagents
- Caspase Assay Kits & Reagents
- Mitochondrial Apoptosis Kits & Reagents
- Nuclear Apoptosis Kits & Reagents
- Apoptosis Inducers and Set
- Apoptosis siRNA Vectors

#### Cell Fractionation System

- Mitochondria/Cytosol Fractionation Kit
- Nuclear/Cytosol Fractionation Kit
- Membrane Protein Extraction Kit
- Cytosol/Particulate Rapid Separation Kit
- Mammalian Cell Extraction Kit
- FractionPREP Fractionation System