

Akt3, Rabbit pAb

| | |
|----------------------------|---|
| CATALOG #: | 3162-100 |
| AMOUNT: | 100 µg |
| LOT #: | _____ |
| HOST(ISOTYPE): | Rabbit (Ig) |
| IMMUNOGEN: | KLH conjugated synthetic peptide selected from the C-terminal region of human Akt3. |
| SPECIES REACTIVITY: | Human |

FORMULATION:

Purified polyclonal antibody supplied in PBS with 0.09% (W/V) sodium azide. This antibody is prepared by Saturated Ammonium Sulfate (SAS) precipitation followed by dialysis against PBS.

STORAGE CONDITIONS:

Maintain refrigerated at 2-8°C for up to 6 months or -20°C for long term storage.

BACKGROUND DESCRIPTION:

AKT3 is a member of the AKT, also called PKB, serine/threonine protein kinase family. AKT kinases are known to be regulators of cell signaling in response to insulin and growth factors. They are involved in a wide variety of biological processes including cell proliferation, differentiation, apoptosis, tumorigenesis, as well as glycogen synthesis and glucose uptake. This kinase has been shown to be stimulated by platelet-derived growth factor (PDGF), insulin, and insulin-like growth factor 1 (IGF1).

BACKGROUND REFERENCES:

- Xu, Z., et al., Biochem. Biophys. Res. Commun. 312(2):388-396 (2003).
- Tiwari, G., et al., Mol. Cancer Res. 1(6):475-484 (2003).
- Brozinick, J.T. Jr., et al., Diabetes 52(4):935-941 (2003).
- Deregibus, M.C., et al., J. Biol. Chem. 277(28):25195-25202 (2002).
- Brodbeck, D., et al., J. Biol. Chem. 276(31):29550-29558 (2001).

OTHER NAMES:

RAC-gamma serine/threonine-protein kinase; RAC-PK-gamma; Protein kinase Akt-3; Protein kinase B, gamma; PKB gamma; STK-2; AKT3.

SPECIFICITY:

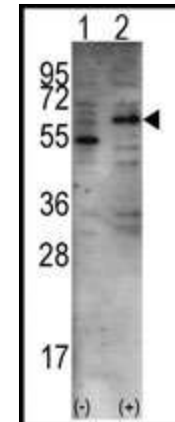
The antibody detects a ~ 56 kDa band, corresponding to the expected molecular mass of Akt3 on immunoblots.

FOR RESEARCH USE ONLY! Not to be used on humans.

APPLICATION (suggested concentration):

The antibody can be used for ELISA (0.25 µg/ml), Western blotting (2.5 – 5 µg/ml).

APPLICATION DATA (Calculated MW = 55775 Da):



Western blot analysis of ATK3(C-term) (arrow) using rabbit polyclonal AKT3 Antibody (Cat.#3162-100). 293 cell lysates (2 ug/lane) either nontransfected (Lane 1) or transiently transfected with the AKT3 gene (Lane 2) (Origene Technologies).

RELATED PRODUCTS:

Apoptosis Detection Kits & Reagents

- Annexin V Kits & Bulk Reagents
- Caspase Assay Kits & Reagents
- Mitochondrial Apoptosis Kits & Reagents
- Nuclear Apoptosis Kits & Reagents
- Apoptosis Inducers and Set
- Apoptosis siRNA Vectors

Cell Fractionation System

- Mitochondria/Cytosol Fractionation Kit
- Nuclear/Cytosol Fractionation Kit
- Membrane Protein Extraction Kit
- Cytosol/Particulate Rapid Separation Kit
- Mammalian Cell Extraction Kit
- FractionPREP Fractionation System