

Akt3, Rabbit pAb

CATALOG #:	3163-100
AMOUNT:	100 µg
LOT #:	_____
HOST(ISOTYPE):	Rabbit (Ig)
IMMUNOGEN:	KLH conjugated synthetic peptide corresponding to amino acid residues surrounding S472 of human Akt3.
SPECIES REACTIVITY:	Human, (Mouse)

FORMULATION:

Purified rabbit polyclonal antibody supplied in PBS with 0.09% (W/V) sodium azide. This antibody is purified through a protein A column, followed by peptide affinity purification.

STORAGE CONDITIONS:

Maintain refrigerated at 2-8°C for up to 6 months or -20°C for long term storage.

BACKGROUND DESCRIPTION:

AKT3 is a member of the AKT, also called PKB, serine/threonine protein kinase family. AKT kinases are known to be regulators of cell signaling in response to insulin and growth factors. They are involved in a wide variety of biological processes including cell proliferation, differentiation, apoptosis, tumorigenesis, as well as glycogen synthesis and glucose uptake. This kinase has been shown to be stimulated by platelet-derived growth factor (PDGF), insulin, and insulin-like growth factor 1 (IGF1).

BACKGROUND REFERENCES:

- Xu, Z., et al., *Biochem. Biophys. Res. Commun.* 312(2):388-396 (2003).
- Tiwari, G., et al., *Mol. Cancer Res.* 1(6):475-484 (2003).
- Brozinick, J.T. Jr., et al., *Diabetes* 52(4):935-941 (2003).
- Deregibus, M.C., et al., *J. Biol. Chem.* 277(28):25195-25202 (2002).
- Brodbeck, D., et al., *J. Biol. Chem.* 276(31):29550-29558 (2001).

OTHER NAMES:

RAC-gamma serine/threonine-protein kinase; RAC-PK-gamma; Protein kinase Akt-3; Protein kinase B, gamma; PKB gamma; STK-2; AKT3.

SPECIFICITY:

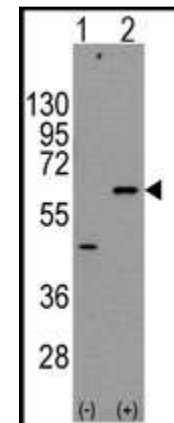
The antibody detects a ~ 56 kDa band, corresponding to the expected molecular mass of Akt3 on immunoblots.

FOR RESEARCH USE ONLY! Not to be used on humans.

APPLICATION (suggested concentration):

The antibody can be used for ELISA (0.25 µg/ml), Western blotting (2.5 – 5 µg/ml).

APPLICATION DATA (Calculated MW = 55775 Da):



Western blot analysis of AKT3 (arrow) using rabbit polyclonal AKT3 Antibody (Cat.#3163-100). 293 cell lysates (2 ug/lane) either nontransfected (Lane 1) or transiently transfected with the AKT3 gene (Lane 2) (Origene Technologies)

RELATED PRODUCTS:

Apoptosis Detection Kits & Reagents

- Annexin V Kits & Bulk Reagents
- Caspase Assay Kits & Reagents
- Mitochondrial Apoptosis Kits & Reagents
- Nuclear Apoptosis Kits & Reagents
- Apoptosis Inducers and Set
- Apoptosis siRNA Vectors

Cell Fractionation System

- Mitochondria/Cytosol Fractionation Kit
- Nuclear/Cytosol Fractionation Kit
- Membrane Protein Extraction Kit
- Cytosol/Particulate Rapid Separation Kit
- Mammalian Cell Extraction Kit
- FractionPREP Fractionation System