



## TLR8 (Toll-like receptor 8) Monoclonal Antibody

<b>CATALOG #:</b>	3558-100
<b>AMOUNT:</b>	100 $\mu$ l
<b>LOT #:</b>	_____
<b>CLONE#:</b>	44B05
<b>ISOTYPE:</b>	Mouse IgG1
<b>IMMUNOGEN:</b>	Recombinant human TLR8
<b>SPECIES REACTIVITY:</b>	human

### FORMULATION:

100  $\mu$ l (1 mg/ml) Protein G purified mouse anti-TLR8 monoclonal antibody in phosphate buffered saline (PBS), pH 7.2, containing 50% glycerol, 1% BSA, 0.02% thimerosal.

### STORAGE CONDITIONS:

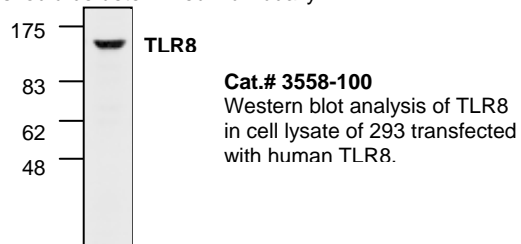
Store at -20°C. For long-term storage, aliquot and freeze at -70°C. Avoid repeated freeze/defrost.

### BACKGROUND:

The Toll-like receptor (TLR) family of proteins are characterized by a highly conserved Toll homology (TH) domain, which is essential for Toll-induced signal transduction. TLR1 contains an extracellular domain consisting of several leucine-rich regions along with a single cytoplasmic Toll/IL-1R-like domain. TLR2 and TLR4 are activated in response to lipopolysacchride (LPS) stimulation, which results in the activation and translocation of NF $\kappa$ B and suggests that these receptors are involved in mediating inflammatory responses. TLR6 is highly homologous to TLR1, and like other members of TLR family, it induces NF $\kappa$ B signaling upon activation. TLR8 gene contains three exons, two of which have coding function. Expression of TLR receptors is highest in peripheral blood leukocytes, macrophages, and monocytes.

### APPLICATION AND USAGE:

The antibody can be used for Western blotting (1:200-1000 dilutions) and FACS analysis. Ramos cell lysate can be used as a positive control and a 120 kDa band is detected in Western blotting. For FACS analysis, we recommend 1-4  $\mu$ l per million cells. However, the optimal conditions should be determined individually.



### RELATED PRODUCTS:

#### Apoptosis Detection Kits & Reagents

- Annexin V Kits & Bulk Reagents
- Caspase Assay Kits & Reagents
- Mitochondrial Apoptosis Kits & Reagents
- Nuclear Apoptosis Kits & Reagents
- Apoptosis Inducers and Set
- Apoptosis siRNA Vectors

#### Cell Fractionation System

- Mitochondria/Cytosol Fractionation Kit
- Nuclear/Cytosol Fractionation Kit
- Membrane Protein Extraction Kit
- Cytosol/Particulate Rapid Separation Kit
- Mammalian Cell Extraction Kit
- FractionPREP Fractionation System

#### Cell Proliferation & Senescence

- Quick Cell Proliferation Assay Kit
- Senescence Detection Kit
- High Throughput Apoptosis/Cell Viability Assay Kits
- LDH-Cytotoxicity Assay Kit
- Bioluminescence Cytotoxicity Assay Kit
- Live/Dead Cell Staining Kit

#### Cell Damage & Repair

- HDAC Fluorometric & Colorimetric Assays & Drug Discovery Kits
- HAT Colorimetric Assay Kit & Reagents
- DNA Damage Quantification Kit
- Glutathione & Nitric Oxide Fluorometric & Colorimetric Assay Kits

#### Signal Transduction

- cAMP & cGMP Assay Kits
- Akt & JNK Activity Assay Kits
- Beta-Secretase Activity Assay Kit

#### Adipocyte & Lipid Transfer

- Recombinant Adiponectin, Survivin, & Leptin
- CETP Activity Assay & Drug Discovery Kits
- PLTP Activity Assay & Drug Discovery Kits
- Total Cholesterol Quantification Kit

#### Molecular Biology & Reporter Assays

- siRNA Vectors
- Cloning Insert Quick Screening Kit
- Mitochondrial & Genomic DNA Isolation Kits
- 5 Minutes DNA Ligation Kit
- 20 Minutes Gel Staining/Destaining Kit
- $\beta$ -Galactosidase Staining Kit & Luciferase Reporter Assay Kit

#### Growth Factors and Cytokines

#### Monoclonal and Polyclonal Antibodies