

## Dystrophin Polyclonal Antibody

|                            |   |
|----------------------------|---|
| <b>CATALOG #:</b>          | 3586R-100   |
| <b>AMOUNT:</b>             | 100 µg  |
| <b>LOT #:</b>              | _____   |
| <b>IMMUNOGEN:</b>          | Synthetic peptide surrounding amino acid 3656 of human Dystrophin (Internal ID#: BV- C64) |
| <b>SPECIES REACTIVITY:</b> | Human, Mouse, Rat   |

**FORMULATION:**

100 µg (0.5 mg/ml) antigen affinity purified rabbit anti-Dystrophin polyclonal antibody in phosphate buffered saline (PBS), pH 7.2, containing 30% glycerol and 0.01% Thimerosal.

**STORAGE CONDITIONS:**

Store at -20°C. For long term storage, aliquot and freeze at -70°C. Avoid repeated freeze/defrost cycles.

**BACKGROUND:**

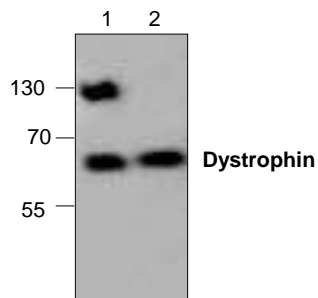
Dystrophin is one of the actin-binding proteins that are involved in anchoring the cytoskeleton to the plasma membrane. Dystrophin expression is found in muscle brain tissues, where it is located to the inner surface of the plasma membrane. It is suggested that alternative splicing of the caboxy terminus allows dystrophin to interact with a variety of proteins. Loss of dystrophin-associated proteins in Duchenne afflicted muscle is due to the absence of dystrophin rather than to muscle degradation and lack of dystrophin results in the loss of linkage between the cytoskeleton and extracellular matrix.

**SPECIFICITY:**

The antibody detects ~60 and 130 kDa of Dystrophin in samples from human, mouse and rat origins. Reactivity to other species has not been determined.

**APPLICATIONS:**

The antibody can be used for Western blotting (0.5-4 µg/ml). However, the optimal conditions should be determined individually. Blocking peptide (Cat.# 3586RBP-50) is available separately.



**Cat.#: 3586R-100**  
Western blot analysis of Dystrophin expression in 3T3 cell lysate (Lane 1) and rat kidney tissue lysate (Lane 2).

**FOR RESEARCH USE ONLY! Not to be used on humans.**

**RELATED PRODUCTS:**

## Apoptosis Detection Kits &amp; Reagents

- Annexin V Kits & Bulk Reagents
- Caspase Assay Kits & Reagents
- Mitochondrial Apoptosis Kits & Reagents
- Nuclear Apoptosis Kits & Reagents
- Apoptosis Inducers and Set
- Apoptosis siRNA Vectors

## Cell Fractionation System

- Mitochondria/Cytosol Fractionation Kit
- Nuclear/Cytosol Fractionation Kit
- Membrane Protein Extraction Kit
- Cytosol/Particulate Rapid Separation Kit
- Mammalian Cell Extraction Kit
- FractionPREP Fractionation System

## Cell Proliferation &amp; Senescence

- Quick Cell Proliferation Assay Kit
- Senescence Detection Kit
- High Throughput Apoptosis/Cell Viability Assay Kits
- LDH-Cytotoxicity Assay Kit
- Bioluminescence Cytotoxicity Assay Kit
- Live/Dead Cell Staining Kit

## Cell Damage &amp; Repair

- HDAC Fluorometric & Colorimetric Assays & Drug Discovery Kits
- HAT Colorimetric Assay Kit & Reagents
- DNA Damage Quantification Kit
- Glutathione Fluorometric & Colorimetric Assay Kits
- Nitric Oxide Fluorometric & Colorimetric Assay Kits

## Signal Transduction

- cAMP & cGMP Assay Kits
- Akt & JNK Activity Assay Kits
- Beta-Secretase Activity Assay Kit

## Adipocyte &amp; Lipid Transfer

- Recombinant Adiponectin, Survivin, & Leptin
- CETP Activity Assay & Drug Discovery Kits
- PLTP Activity Assay & Drug Discovery Kits
- Total Cholesterol Quantification Kit

## Molecular Biology &amp; Reporter Assays

- siRNA Vectors
- Cloning Insert Quick Screening Kit
- Mitochondrial & Genomic DNA Isolation Kits
- 20 Minutes Gel Staining/Destaining Kit

## Growth Factors and Cytokines (many)

## Monoclonal and Polyclonal Antibodies

## Quality Chemicals and Reagents