

## Sphingosine Kinase 1 Polyclonal Antibody

**CATALOG #:** 3883-100

**AMOUNT:** 100 µg

**LOT #:** \_\_\_\_\_

**HOST:** Rabbit

**IMMUNOGEN:** Synthetic peptide corresponding to residues surrounding amino acid 180 of mouse Sphingosine Kinase 1 (Internal ID# BV-A41)

**SPECIES REACTIVITY:** Human, Mouse, Rat

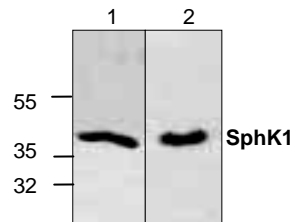
**FORMULATION:**  
100 µg (0.5mg/ml) affinity purified rabbit polyclonal antibody in phosphate-buffered saline (PBS) containing 30% glycerol, 0.5% BSA and 0.01% thimerosal.

**STORAGE CONDITIONS:**  
Store at -20°C. For long term storage, aliquot and freeze at -70°C. Avoid repeated freeze/thaw cycles.

**BACKGROUND:**  
Sphingosine Kinase (SphK) is a conserved lipid kinase that catalyzes the phosphorylation of sphingolipid sphingosine to sphingosine-1-phosphate (SIP). SIP receptors coupled to cell surface G protein to regulate cell growth, survival, motility and inflammatory responses. There are two types of SphK, SphK1 and SphK2. SphK1 is found in the cytosol and migrates to the membrane when activated. SphK1 has been associated with cell growth, prevention of apoptosis and cellular transformation. SphK2 is found mainly in the nucleus and in contrast to SphK1, it enhances the rate of apoptosis.

**SPECIFICITY:**  
The antibody recognizes 42 kDa bands from samples of human, mouse and rat origins. Reactivity to other species has not been tested.

**APPLICATION:**  
The antibody can be used in Western blotting (0.5-4 µg/ml). However, the optimal concentrations should be determined individually. Blocking peptide (3883BP-50) is available separately.



**Cat. #:3883-100**  
Western blot analysis of Sphingosine Kinase 1 in Jurkat cell lysate (**Lane 1**) and rat kidney tissue lysate (**Lane 2**).

### RELATED PRODUCTS:

- Apoptosis Detection Kits & Reagents
  - Annexin V Kits & Bulk Reagents
  - Caspase Assay Kits & Reagents
  - Mitochondrial Apoptosis Kits & Reagents
  - Nuclear Apoptosis Kits & Reagents
  - Apoptosis Inducers and Set
  - Apoptosis siRNA Vectors
- Cell Fractionation System
  - Mitochondria/Cytosol Fractionation Kit
  - Nuclear/Cytosol Fractionation Kit
  - Membrane Protein Extraction Kit
  - Cytosol/Particulate Rapid Separation Kit
  - Mammalian Cell Extraction Kit
  - FractionPREP Fractionation System
- Cell Proliferation & Senescence
  - Quick Cell Proliferation Assay Kit
  - Senescence Detection Kit
  - High Throughput Apoptosis/Cell Viability Assay Kits
  - LDH-Cytotoxicity Assay Kit
  - Bioluminescence Cytotoxicity Assay Kit
  - Live/Dead Cell Staining Kit
- Cell Damage & Repair
  - HDAC Fluorometric & Colorimetric Assays & Drug Discovery Kits
  - HAT Colorimetric Assay Kit & Reagents
  - DNA Damage Quantification Kit
  - Glutathione & Nitric Oxide Fluorometric & Colorimetric Assay Kits
- Signal Transduction
  - cAMP & cGMP Assay Kits
  - Akt & JNK Activity Assay Kits
  - Beta-Secretase Activity Assay Kit
- Adipocyte & Lipid Transfer
  - Recombinant Adiponectin, Survivin, & Leptin
  - CETP Activity Assay & Drug Discovery Kits
  - PLTP Activity Assay & Drug Discovery Kits
  - Total Cholesterol Quantification Kit
- Molecular Biology & Reporter Assays
  - siRNA Vectors
  - Cloning Insert Quick Screening Kit
  - Mitochondrial & Genomic DNA Isolation Kits
  - 5 Minutes DNA Ligation Kit
  - 20 Minutes Gel Staining/Destaining Kit
  - β-Galactosidase Staining Kit & Luciferase Reporter Assay Kit
- Growth Factors and Cytokines
- Monoclonal and Polyclonal Antibodies

**FOR RESEARCH USE ONLY! Not to be used on humans.**