

GLUT4 Polyclonal Antibody

CATALOG #:	3945-200
AMOUNT:	200 µg
LOT #:	_____
IMMUNOGEN:	Synthetic peptide surrounding amino acid 494 of mouse GLUT4
INTERNAL ID#:	BV-H26A
HOST:	Rabbit
SPECIES REACTIVITY:	Human, Mouse, Rat

FORMULATION:

200 µg (0.5 mg/ml) affinity purified rabbit anti-GLUT4 polyclonal antibody in phosphate buffered saline (PBS), pH 7.2, containing 30% glycerol, 0.5% BSA, 5 mM EDTA and 0.01% thimerosal.

STORAGE CONDITIONS:

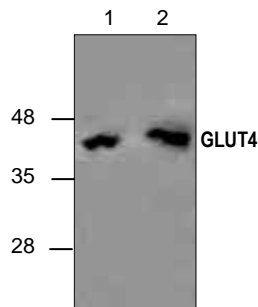
Store at -20°C. For long term storage, aliquot and freeze at -70°C. Avoid repeated freeze/thaw cycles.

DESCRIPTION:

Insulin stimulates glucose uptake in the muscles and adipose tissues by activating GLUT4 (Glucose Transporter Type 4). GLUT 4 is a transmembrane protein that facilitates glucose transport from storage sites to cell surface. Human insulin resistance involves a defect in GLUT4 that leads to accumulation in a dense membrane compartment from which insulin is unable to recruit GLUT4 to the cell surface.

APPLICATION AND USAGE:

The antibody can be used for Western blot analysis (1-4 µg/ml). However, the optimal conditions should be determined individually. Blocking peptide (Cat.# 3945BP-50) is available separately.



Cat.# 3945-200 GLUT4 Antibody.
Western blot analysis of GLUT4 with 3T3 cell lysate (Lane 1) and rat kidney tissue lysate (Lane 2).

RELATED PRODUCTS:

Apoptosis Detection Kits & Reagents

- Annexin V Kits & Bulk Reagents
- Caspase Assay Kits & Reagents
- Mitochondrial Apoptosis Kits & Reagents
- Nuclear Apoptosis Kits & Reagents
- Apoptosis Inducers and Set
- Apoptosis siRNA Vectors

Cell Fractionation System

- Mitochondria/Cytosol Fractionation Kit
- Nuclear/Cytosol Fractionation Kit
- Membrane Protein Extraction Kit
- Cytosol/Particulate Rapid Separation Kit
- Mammalian Cell Extraction Kit
- FractionPREP Fractionation System

Cell Proliferation & Senescence

- Quick Cell Proliferation Assay Kit
- Senescence Detection Kit
- High Throughput Apoptosis/Cell Viability Assay Kits
- LDH-Cytotoxicity Assay Kit
- Bioluminescence Cytotoxicity Assay Kit
- Live/Dead Cell Staining Kit

Cell Damage & Repair

- HDAC Fluorometric & Colorimetric Assays & Drug Discovery Kits
- HAT Colorimetric Assay Kit & Reagents
- DNA Damage Quantification Kit
- Glutathione & Nitric Oxide Fluorometric & Colorimetric Assay Kits

Signal Transduction

- cAMP & cGMP Assay Kits
- Akt & JNK Activity Assay Kits
- Beta-Secretase Activity Assay Kit

Adipocyte & Lipid Transfer

- Recombinant Adiponectin, Survivin, & Leptin
- CETP Activity Assay & Drug Discovery Kits
- PLTP Activity Assay & Drug Discovery Kits
- Total Cholesterol Quantification Kit

Molecular Biology & Reporter Assays

- siRNA Vectors
- Cloning Insert Quick Screening Kit
- Mitochondrial & Genomic DNA Isolation Kits
- 5 Minutes DNA Ligation Kit
- 20 Minutes Gel Staining/Destaining Kit
- β-Galactosidase Staining Kit & Luciferase Reporter Assay Kit

Growth Factors and Cytokines

Monoclonal and Polyclonal Antibodies

FOR RESEARCH USE ONLY! Not to be used on humans.