

Product Information

RedDot™1

Catalog #	Unit Size	Concentration	Storage
40060-T	25 µl	200X in water	Store at -20°C, protect from light
40060	250 µl		
40060-1	1 ml		

Storage and Handling

Store RedDot1 at -20°C, protected from light. RedDot1 is stable and can tolerate multiple rounds of freeze thaw. When stored as directed, RedDot1 is stable for at least one year from the date of receipt.

CAUTION: RedDot1 may be toxic and mutagenic. Handle with care. Dispose of RedDot1 as toxic waste according to your institution's regulations.

Spectral properties

Abs/Em maxima with DNA: 662/694 nm

RedDot1 can be excited at a wide range of wavelengths including the 488 nm laser for flow cytometry and by wavelengths up to 647 nm.

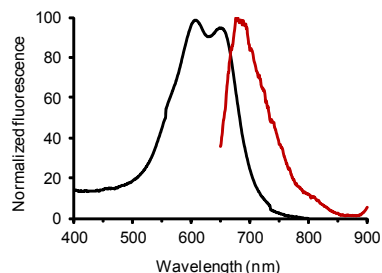


Figure 1. Absorption and emission spectra of RedDot1 in live Jurkat cells.

Product Description

RedDot1 is a far red nuclear stain for live cells. RedDot1 dye can be excited by wavelengths from 488 to 647 nm and emits far red fluorescence with emission maximum at 694 nm (Fig. 1). RedDot1 specifically stains the nucleus of live cells (Fig. 2). RedDot1 staining does not require a wash step and demonstrates greater photostability than the traditional blue fluorescent nuclear stains DAPI and Hoechst.

RedDot1 nuclear staining is not fixable. RedDot1 is not recommended as a nuclear counterstain for microscopic imaging of fixed and permeabilized cells. RedDot2 (see related products) is recommended for nuclear-specific counterstaining of fixed and permeabilized cells and tissue sections.

RedDot1 can be used to stain fixed and permeabilized cells for cell number normalization for In-Cell Western™ assays using a near-infrared scanner such as the LI-COR Odyssey®. In fixed cells, RedDot1 staining generates a linear fluorescence signal in the 700 nm channel in proportion to cell number. In a direct comparison, RedDot1 staining for cell normalization showed higher signal and a wider linear range compared to DRAQ5™/Sapphire700™ staining (Fig. 3).

RedDot1 also can be used to stain live cells for cell cycle distribution analysis by flow cytometry (Fig. 4).

Staining Protocols

Live cell nuclear staining

Because RedDot1 staining does not require a wash step, it can be added after other cell labeling or treatment and immediately prior to fluorescence analysis.

1. Dilute RedDot1 dye in cell culture medium or PBS to a final concentration of 1X.
2. Incubate cells with medium or PBS containing RedDot1 for 5-30 minutes at room temperature or for 5 minutes at 37°C.
3. Detect far red nuclear staining by fluorescence microscopy, flow cytometry, or fluorescence microplate reader.

Note: Like many membrane permeable nucleic acid binding dyes, RedDot1 demonstrates cellular toxicity within 4-18 hours after staining (toxicity may vary by cell type).

Note: For flow cytometry analysis of cell cycle distribution, use a slow flow rate and linear scaling for fluorescence acquisition.

Staining of fixed and permeabilized cells for cell number normalization

We recommend performing a standard curve of cell density and testing RedDot1 at 1X and 2X final concentration to determine optimal staining concentration for linear fluorescence signal for your cell type (see Fig. 3).

1. Fix cells in 4% formaldehyde in phosphate buffered saline (PBS) for 15 minutes at room temperature or 30 minutes at 4°C.
Note: Alternatively, cells can be fixed with methanol for 5-10 minutes at -20°C.
2. Permeabilize and block cells by incubating with the immunofluorescence blocking buffer of your choice containing 0.1% Triton X-100 for 30 minutes at room temperature.
3. Optional: perform immunofluorescence staining according to your standard protocol.
4. Dilute RedDot1 in PBS to a final concentration of 1X or 2X. Stain cells for 10 minutes or longer at room temperature.
Note: RedDot1 can be diluted in immunofluorescence blocking buffer and incubated together with antibodies during immunofluorescence staining.
5. Optional: wash cells in PBS according to your immunostaining protocol.
6. For LI-COR Odyssey near-IR fluorescent readers, remove buffer and allow wells to dry before imaging. Store the dry plate at 4°C protected from light.
7. Read fluorescence in the 700 nm channel according to the instrument manufacturer's instructions.

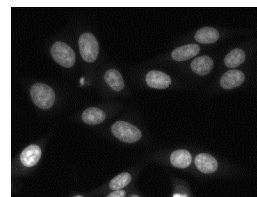


Figure 2. RedDot1 staining of live HeLa cells.

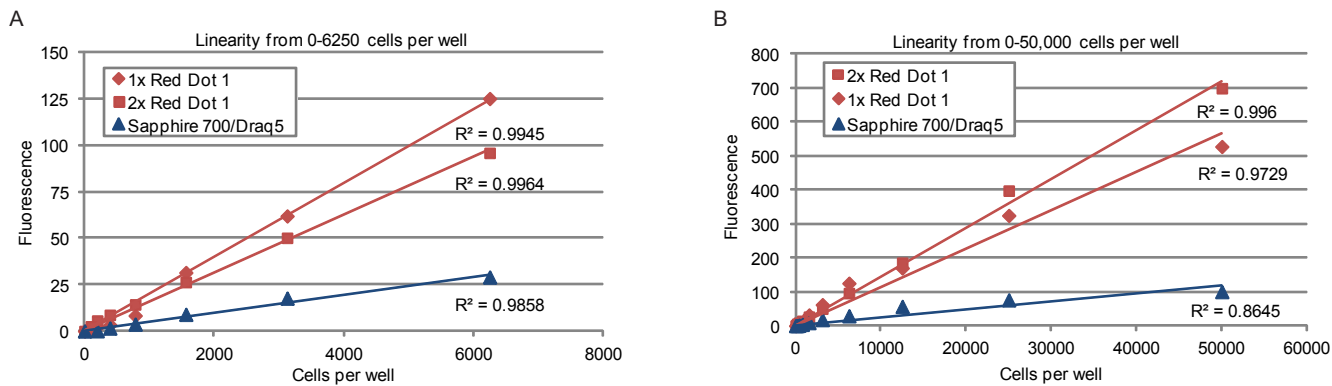


Figure 3. RedDot1 staining of HeLa cells for cell number normalization. HeLa cells were seeded in 96 wells at the indicated densities. After 24 hours, cells were fixed, permeabilized, and stained with the indicated dyes for one hour at room temperature according to the supplier's protocol for DRAQ5/Sapphire700. A. Linearity of fluorescence signal for 0-6250 cells per well. B. Linearity of fluorescence signal for 0-50,000 cells per well. HeLa cells seeded at 25,000 cells per well were confluent at the time of assay.

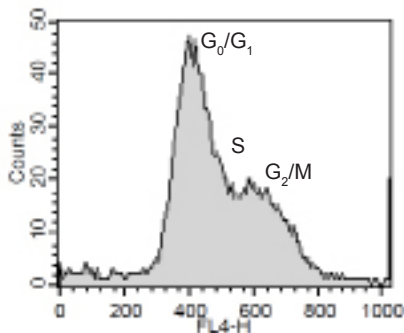


Figure 4. RedDot1 staining for cell cycle distribution analysis. Live Jurkat cells were stained with 1X RedDot1 for 30 minutes at 37°C, then analyzed in the FL4 channel of a BD FACSCalibur flow cytometer.

Related Products

Cat.#	Product Name	Unit Size
40061-T	RedDot2	25 µl
40061	RedDot2	250 µl
40061-1	RedDot2	1 ml
30068	ViaFluor 405-SE Cell Proliferation Kit	Kit
30050	CFDA-SE Cell Proliferation Kit	Kit
23001	EverBrite Mounting Medium	10 ml
23002	EverBrite Mounting Medium with DAPI	10 ml
40009	DAPI, dilactate	10 mg
40011	DAPI (dihydrochloride salt)	10 mg
40043	DAPI in water, 10 mg/ml	1 ml
40016	Propidium iodide	100 mg
40017	Propidium iodide in water, 1.0 mg/ml	10 ml
40048	Propidium iodide buffer, 50 µg/ml	2 ml
40044	Hoechst 33258 in water, 10 mg/ml	10 ml
40045	Hoechst 33258, pentahydrate	100 mg
40046	Hoechst 33342 in water, 10 mg/ml	10 ml
40047	Hoechst 33342, trihydrochloride trihydrate	100 mg

RedDot is a trademark of Biotium, Inc. Odyssey, In-Cell Western, and Sapphire700 are trademarks or registered trademarks of LI-COR, Inc. DRAQ5 is a trademark of Biostatus Ltd.