

**ELISA for Quantitative Determination of Bovine IgG**

**Introduction**

The CellTrend IgG(bovine)-ELISA is designed for the quantitative determination of bovine IgG in complex samples. Main application of the assay is to monitor purification of protein preparations (e.g. monoclonal antibodies) if bovine or calf serum has been used in the production process.

**Principle of the Assay**

The determination of bovine IgG is carried out as direct sandwich ELISA. An antibody specific for bovine IgG has been pre-coated onto a microplate. Standards and samples are pipetted into the wells and any IgG present is bound. After washing away any unbound substances, an enzyme-linked antibody is added. Following a wash, a substrate solution is added to the wells and color develops in proportion to the amount of antibody conjugate. The absorption at 450 nm is proportional to the IgG concentration.

**Performance Characteristics**

*Standard curve:*

7 standards between 3.125 ng/ml and 200 ng/ml

*Sensitivity:*

15.6 ng/ml (sample dilution 1:5)

*Sample materials:*

Protein solutions

*Intraassay precision (C V):*

(n=12)

at 35 ng/ml: 2.9%

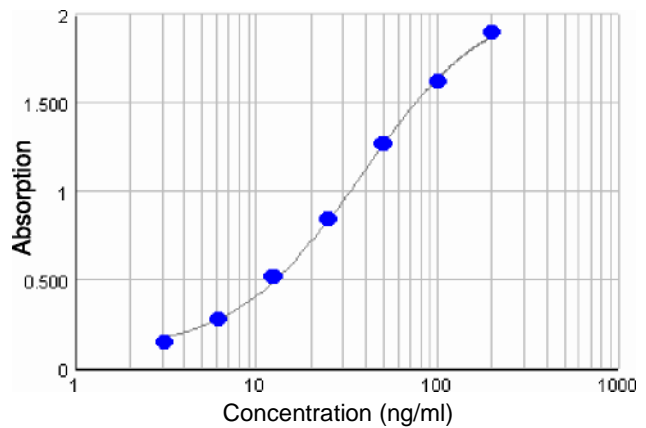
at 112 ng/ml: 5.4%

*Cross reactivities:*

IgG (mouse) <0.1%

For Research use only

**Typical Standard Curve**



**Assay Procedure**

Incubation of samples/standards	100 µl/well	1 hr with shaking or 2 hrs without shaking
Wash		
Incubation of detection antibody	100 µl/well	1 hr with shaking or 2 hrs without shaking
Wash		
Substrate incubation	100 µl/well	15 min, room temperature
Add stop solution	100 µl/well	
Read at 450 nm		

**Order informations**

Product	Catalog number	Price ( )
ELISA for Quantitative Determination of IgG (bovine), 1x96 determ.	51200	607