

## Protein L Polyclonal Antibody

<b>CATALOG #:</b>	5530-100
<b>AMOUNT:</b>	100 µg
<b>LOT #:</b>	_____
<b>HOST:</b>	Rabbit
<b>IMMUNOGEN:</b>	Recombinant Protein L (Internal ID# BV-C5)

### FORMULATION:

100 µg (0.5 mg/ml) affinity purified rabbit anti-Protein L polyclonal antibody in phosphate buffered saline (PBS), pH 7.2, containing 30% glycerol, 0.5% BSA, 0.01% thimerosal.

### STORAGE CONDITIONS:

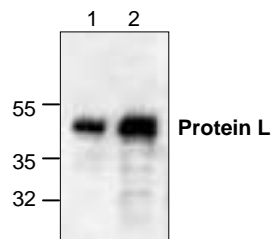
Store at -20°C. For long-term storage, aliquot and freeze at -70°C. Avoid repeated freeze/thaw cycles.

### DESCRIPTION:

Protein L has the unique ability to bind through kappa light chain interactions without interfering with the antibody's antigen-binding site. This gives Protein L the ability to bind a wider range of Ig classes and subclasses than other antibody-binding proteins. Protein L can be used to detect, quantify and purify IgG antibodies and antibody/antigen complexes. BioVision's Recombinant Protein L contains only IgG binding domains. The albumin-binding domain as well as cell wall and cell membrane binding domains have been removed to ensure the maximum specific IgG binding capacity. Protein L binds to all classes of Ig (IgG, IgM, IgA, IgE, and IgD). Protein L will also bind Single Chain Variable Fragments (ScFv) and Fab Fragments. Protein L binds kappa I, III, and IV in human and kappa I on mouse.

### APPLICATION AND SPECIFICITY:

The antibody can be used for Western blot analysis (0.5-4 µg/ml). However, the optimal conditions should be determined individually. Recombinant Protein L (Cat.# 6530-1) can be used as a positive control.



**Cat. #: 5530-100**  
 Western blot analysis using recombinant Protein L (Cat. #:6530-1).  
 Lane 1: 250 ng  
 Lane 2: 1 µg

### RELATED PRODUCTS:

#### Apoptosis Detection Kits & Reagents

- Annexin V Kits & Bulk Reagents
- Caspase Assay Kits & Reagents
- Mitochondrial Apoptosis Kits & Reagents
- Nuclear Apoptosis Kits & Reagents
- Apoptosis Inducers and Set
- Apoptosis siRNA Vectors

#### Cell Fractionation System

- Mitochondria/Cytosol Fractionation Kit
- Nuclear/Cytosol Fractionation Kit
- Membrane Protein Extraction Kit
- Cytosol/Particulate Rapid Separation Kit
- Mammalian Cell Extraction Kit
- FractionPREP Fractionation System

#### Cell Proliferation & Senescence

- Quick Cell Proliferation Assay Kit
- Senescence Detection Kit
- High Throughput Apoptosis/Cell Viability Assay Kits
- LDH-Cytotoxicity Assay Kit
- Bioluminescence Cytotoxicity Assay Kit
- Live/Dead Cell Staining Kit

#### Cell Damage & Repair

- HDAC Fluorometric & Colorimetric Assays & Drug Discovery Kits
- HAT Colorimetric Assay Kit & Reagents
- DNA Damage Quantification Kit
- Glutathione & Nitric Oxide Fluorometric & Colorimetric Assay Kits

#### Signal Transduction

- cAMP & cGMP Assay Kits
- Akt & JNK Activity Assay Kits
- Beta-Secretase Activity Assay Kit

#### Adipocyte & Lipid Transfer

- Recombinant Adiponectin, Survivin, & Leptin
- CETP Activity Assay & Drug Discovery Kits
- PLTP Activity Assay & Drug Discovery Kits
- Total Cholesterol Quantification Kit

#### Molecular Biology & Reporter Assays

- siRNA Vectors
- Cloning Insert Quick Screening Kit
- Mitochondrial & Genomic DNA Isolation Kits
- 5 Minutes DNA Ligation Kit
- 20 Minutes Gel Staining/Destaining Kit
- β-Galactosidase Staining Kit & Luciferase Reporter Assay Kit

#### Growth Factors and Cytokines

#### Monoclonal and Polyclonal Antibodies

**FOR RESEARCH USE ONLY! Not to be used on humans.**