

## Murine RELM $\alpha$ Polyclonal Antibody

<b>CATALOG #:</b>	5631-100
<b>AMOUNT:</b>	100 $\mu$ g
<b>LOT #:</b>	_____
<b>IMMUNOGEN:</b>	<i>E. coli</i> expressed recombinant murine RELM $\alpha$ (Internal ID# BV- E34G)
<b>HOST:</b>	Rabbit
<b>SPECIES REACTIVITY:</b>	Mouse

### FORMULATION:

100  $\mu$ g (0.5 mg/ml) affinity purified rabbit anti- murine RELM $\alpha$  polyclonal antibody in phosphate buffered saline (PBS), pH 7.2, containing 30% glycerol and 0.01% thimerosal.

### STORAGE CONDITIONS:

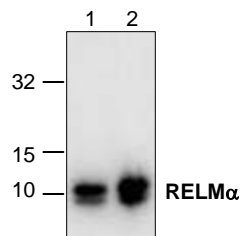
Store at -20°C. For long term storage, aliquot and freeze at -70°C. Avoid repeated freeze/thaw cycles.

### DESCRIPTION:

RELM-alpha belongs to a unique family of tissue-specific cytokines termed FIZZ (found in inflammatory zone) and RELM. The three known members of this family; Resistin, RELM-alpha and RELM-beta are 85-94 amino acid secreted proteins sharing a conserved C-terminal domain characterized by 10 cysteine residues with a unique spacing motif of C-X11-C-X8-C-X-C-X3-C-X10-C-X-C-X-C-X9-C-C. RELM-alpha and Resistin are secreted exclusively by adipocytes while RELM-beta is expressed in the epithelium of the colon and small bowel. The physiological role and molecular targets of RELM-alpha are still unknown. Murine RELM-alpha is a 10.0 kDa monomeric protein containing 88 amino acid residues.

### APPLICATION AND USAGE:

The antibody can be used for Western blot analysis (0.5-4  $\mu$ g/ml). Recombinant murine RELM $\alpha$  (Cat.# 4631-20) can be used as a positive control. However, the optimal conditions should be determined individually.



**Cat. #: 5631-100**  
Western blot analysis of RELM $\alpha$  expression using recombinant murine RELM $\alpha$ .  
Lane 1: 250 ng  
Lane 2: 1  $\mu$ g

### RELATED PRODUCTS:

#### Apoptosis Detection Kits & Reagents

- Annexin V Kits & Bulk Reagents
- Caspase Assay Kits & Reagents
- Mitochondrial Apoptosis Kits & Reagents
- Nuclear Apoptosis Kits & Reagents
- Apoptosis Inducers and Set
- Apoptosis siRNA Vectors

#### Cell Fractionation System

- Mitochondria/Cytosol Fractionation Kit
- Nuclear/Cytosol Fractionation Kit
- Membrane Protein Extraction Kit
- Cytosol/Particulate Rapid Separation Kit
- Mammalian Cell Extraction Kit
- FractionPREP Fractionation System

#### Cell Proliferation & Senescence

- Quick Cell Proliferation Assay Kit
- Senescence Detection Kit
- High Throughput Apoptosis/Cell Viability Assay Kits
- LDH-Cytotoxicity Assay Kit
- Bioluminescence Cytotoxicity Assay Kit
- Live/Dead Cell Staining Kit

#### Cell Damage & Repair

- HDAC Fluorometric & Colorimetric Assays & Drug Discovery Kits
- HAT Colorimetric Assay Kit & Reagents
- DNA Damage Quantification Kit
- Glutathione & Nitric Oxide Fluorometric & Colorimetric Assay Kits

#### Signal Transduction

- cAMP & cGMP Assay Kits
- Akt & JNK Activity Assay Kits
- Beta-Secretase Activity Assay Kit

#### Adipocyte & Lipid Transfer

- Recombinant Adiponectin, Survivin, & Leptin
- CETP Activity Assay & Drug Discovery Kits
- PLTP Activity Assay & Drug Discovery Kits
- Total Cholesterol Quantification Kit

#### Molecular Biology & Reporter Assays

- siRNA Vectors
- Cloning Insert Quick Screening Kit
- Mitochondrial & Genomic DNA Isolation Kits
- 5 Minutes DNA Ligation Kit
- 20 Minutes Gel Staining/Destaining Kit
- $\beta$ -Galactosidase Staining Kit & Luciferase Reporter Assay Kit

#### Growth Factors and Cytokines

#### Monoclonal and Polyclonal Antibodies

**FOR RESEARCH USE ONLY! Not to be used on humans.**