



DATA SHEET

Type II Collagen Detection Kit

Catalog # 6009

For Research Use Only - Not Human or Therapeutic Use

INTRODUCTION

Type II collagen is unique among the collagen family, and its tissue distribution is limited to avascular tissues such as cartilage and the vitreous body of the eye. Since type II collagen can induce arthritis in experimental animals, autoimmunity to type II collagen is suspected in the pathogenesis of certain autoimmune diseases in humans such as rheumatoid arthritis, eye diseases associated with rheumatoid arthritis and relapsing polychondritis, which affects specific tissues containing type II collagen.

The Type II Collagen Detection Kit is designed to quantify the amount of native type II collagen from various species (such as human, monkey, porcine, bovine, rat, mouse, rabbit, equine, dog and chick) in cell and/or tissue culture or from tissue specimens by ELISA. This kit is recommended for studying type II collagen metabolism in both in vivo and in vitro systems. All necessary reagents to measure 39 samples, in duplicate, are included in the kit. The sensitivity of this assay is approximately 3.125-200 ng/ml.

KIT COMPONENTS

Item	Quantity	Amount	Storage
Type II Collagen Standard	1 vial	100 μ l, 100 μ g/ml	-20°C
Capture Antibody	1 vial	100 μ l, 1 mg/ml	-20°C
Detection Antibody	1 vial	50 μ l, lyophilized	-20°C
Solution A - Capture Antibody Dilution Buffer	1 bottle	10 ml	-20°C
Solution B - Sample/Standard Dilution Buffer	1 bottle	50 ml	-20°C
Solution C - Detection Antibody Dilution Buffer	1 bottle	10 ml	-20°C
Solution D - Streptavidin Peroxidase Dilution Buffer	1 bottle	20 ml	-20°C
Streptavidin Peroxidase	2 vials	50 μ l	-20°C
OPD	2 vials	Lyophilized	-20°C
OPD Dilution Buffer	1 bottle	20 ml	-20°C
Stop Solution - 2N Sulfuric Acid	1 bottle	10 ml	-20°C
Wash Buffer, 20X	1 bottle	50 ml	-20°C
ELISA Plate	1 each	96-well (8-well strips x 12)	-20°C

NOTES ON PROCESSING SAMPLES

Solubilization of Collagen

For determining collagen contents in cultured cell layers and tissues by ELISA, solubilization of collagen is required. For solubilizing collagen from sample specimens, a limited digestion of tissue specimens with pepsin is recommended, although other neutral proteinases, such as pronase and papain are capable of solubilizing collagen. These proteinases only digest telopeptides located on both N- and C-terminal of the collagen molecule, but are not capable of digesting the helical conformation region of the collagen molecule and intra- and inter-molecular cross-linkages.

The solubilization of collagen from tissues by a limited proteinase digestion (generally collagen/proteinase ratio is 100:1) depends on the types of tissues and the contents of intra- and inter-molecular cross-linkages. For example, bone and Achilles tendon are resistant to pepsin digestion, and only 10-20% of collagen tissue will be solubilized. On the other hand, young calf skin collagen will be completely solubilized by pepsin digestion within 24-48 hours, but it takes 7-9 days to solubilize adult calfskin. Similarly, type II collagen in young chick sternal cartilage will be solubilized within 24-48 hours, but requires 7-9 days to digest adult bovine cartilage. Likewise, cartilage from aged human is highly resistant to pepsin digestion and the yield of soluble collagen is extremely low due to the high intra- and inter-molecular cross-linkages.

Proteinase resistant insoluble collagen might be solubilized by alkaline treatment. Suspend insoluble collagen in cold 0.1N NaOH solution containing 10% Na₂SO₄ and 0.1M Amine such as Tris, and incubate at 4°C for 1-2 weeks. After treatment of collagen with alkaline, neutralize the pH to 5.0 with HCl, and then dilute it with 0.05M acetic acid or neutral buffer such as 0.1M Tris-0.3M NaCl, pH 7.5.

Therefore, the optimum solubilization condition for individual samples should be determined before processing samples. Collagen can be analyzed by 6% SDS-gel under non-reducing condition, using authentic type I or type II collagen as a standard. If samples contain bands larger than the γ -chain (MW = 300 Kd), the samples must be further digested by pepsin or elastase. On the other hand, if smaller bands or smear bands are observed under the α -chain (MW = 100 Kd), the samples might be over-digested. Therefore, it is critical to understand the biological and physico-chemical properties of individual collagen samples.

Tips on solubilization of collagen can be obtained from Chondrex customer service.

NOTES BEFORE USING ASSAY

Note 1: It is recommended that the standard and samples be run in duplicate.

Note 2: Partially used reagents may be kept at -20°C.

Note 3: Crystals may form in the 20X wash buffer when stored at cold temperatures. If crystals have formed, it is necessary to warm the wash buffer by placing the bottle in warm water until crystals have dissolved completely.

Note 4: Measure exact volume of buffers using a serological pipette prior to diluting. Extra buffer is provided.

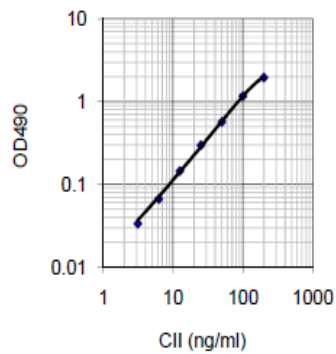
ASSAY PROCEDURE

1. **Add Capture Antibody:** Dilute one vial of Capture Antibody with 10 ml of Capture Antibody Dilution Buffer (Solution A). Add 100 μ l of capture antibody solution to each well and incubate at 4°C overnight.
2. **Dilute Wash Buffer:** Dilute 50 ml of 20X wash buffer in 950 ml of distilled water (1X wash buffer). Wash the plate with 1X wash buffer at least 3 times using a wash bottle with manifold or an automated plate washer. Empty the plate by inverting it and blot on a paper towel to remove excess liquid. *Do not allow the plate to dry out.*
3. **Prepare Standard Dilutions:** The recommended standard range is 3.125-200 ng/ml. Prepare serial dilutions of the standard by mixing 20 μ l of 100 μ g/ml standard with 980 μ l of Sample/Standard Dilution Buffer (Solution B) - 2000 ng/ml. Then mix 100 μ l of the 2000 ng/ml standard with 900 μ l of Solution B - 200 ng/ml. Then mix 250 μ l of the 200 ng/ml standard with 250 μ l of Solution B - 100 ng/ml. Then repeat this procedure to make five more serial dilutions of standard - 50, 25, 12.5, 6.25, and 3.125 ng/ml solutions. The 100 μ g/ml standard stock may be stored at -20°C for use in a second assay. We recommend making fresh serial dilutions for each assay.
4. **Prepare Sample Dilutions:** Dilute tissue samples 1:1-1:1000 with Solution B depending on the estimated collagen content in the samples. Cell samples can be used without further dilution. However, if it is necessary, dilute cell samples 1:1-1:100 with Solution B.
5. **Add Standards and Samples:** Mix samples and standard tubes well. Add 100 μ l of Solution B (blank), standards and samples to appropriate wells. Incubate at room temperature for 2 hours.
6. **Wash:** Wash the plate with 1X wash buffer at least 3 times using a wash bottle with manifold or an automated plate washer. Empty the plate by inverting it and blot on a paper towel to remove excess liquid. *Do not allow the plate to dry out.*
7. **Add Detection Antibody:** Dissolve one vial of Detection Antibody in 10 ml of Detection Antibody Dilution Buffer (Solution C). Add 100 μ l of detection antibody solution to each well and incubate at room temperature for 2 hours.
8. **Wash:** Wash the plate with 1X wash buffer at least 3 times using a wash bottle with manifold or an automated plate washer. Empty the plate by inverting it and blot on a paper towel to remove excess liquid. *Do not allow the plate to dry out.*
9. **Add Streptavidin Peroxidase:** Dilute one vial of Streptavidin Peroxidase in 10 ml of Streptavidin Peroxidase Dilution Buffer (Solution D). Add 100 μ l of streptavidin peroxidase solution to each well and incubate at room temperature for 1 hour.
10. **Wash:** Wash the plate with 1X wash buffer at least 3 times using a wash bottle with manifold or an automated plate washer. Empty the plate by inverting it and blot on a paper towel to remove excess liquid. *Do not allow the plate to dry out.*
11. **OPD:** Dissolve one vial of OPD in 10 ml of OPD Dilution Buffer just prior to use. Add 100 μ l of OPD solution to each well immediately after washing the plate. Incubate for 30 minutes at room temperature.
12. **Stop:** Add 50 μ l of 2N sulfuric acid (Stop Solution) to each well.
13. **Read Plate:** Read the OD values at 490 nm. If the OD values of samples are greater than the OD values of the highest standard, re-assay the samples at a higher dilution. A 630 nm filter can be used as a reference.

CALCULATION OF RESULTS

1. Average the duplicate OD values for the blank, standards and test samples.
2. Subtract the "blank" (B) values from the averaged OD values in step 1.
3. Plot the OD values of standards against the concentration of collagen ($\mu\text{g/ml}$). Using a log/log plot will linearize the data. Figure 3 shows a representative experiment where the standard range is from 3.125-200 ng/ml.
4. The $\mu\text{g/ml}$ of type II collagen in test samples can be calculated using regression analysis.

Figure 3 - A typical standard curve



GENTIA