



Produced in Rabbit

Catalog No.

A300-462A

Storage:

2 - 8° C

Amount:

0.1 ml at 0.2 mg/ml

Buffer:

Tris-buffered Saline containing 0.1% BSA containing 0.09% Sodium Azide

Shelf Life:

1 year from date of receipt

Production Procedures: Antibody was affinity purified using an epitope specific to DDB1 immobilized on solid support.

The epitope recognized by A300-462A maps to a region between residue 1100 and the C-terminus (residue 1140) of human damage-specific DNA binding protein 1 using the numbering given in TrEMBL entry Q13289 (GeneID 1642).

Immunoglobulin concentration was determined by extinction coefficient: absorbance at 280 nm of 1.4 equals 1.0 mg of IgG.

Alternate Names:

UV-DDB1, DDB1, DNA Damage Binding Protein 1, 127 kDA, XPE, XPCE, xeroderma pigmentosum complementation group E, XPE-BF, XAP1.

Country of Origin:

USA

Notes:

Centrifuge tube to remove product from lid.

For In vitro laboratory use only. Not for any clinical, therapeutic, or diagnostic use in humans or animals. Not for animal or human consumption.

This product may not be resold or modified for resale without the prior written approval of Bethyl Laboratories, Inc.

Related Products:

Rabbit anti-DTL/CDT2 Antibody, Affinity Purified	A300-947A
Rabbit anti-DTL/CDT2 Antibody, Affinity Purified	A300-948A
DDB1 Blocking Peptide	BP300-462

Catalog No.

A300-462A

Reactivity: Human and mouse. Other species have not been tested. Reactivity with *X. laevis* DDB1 is expected owing to complete identity between this ortholog and human DDB1 at the site to which the epitope maps.

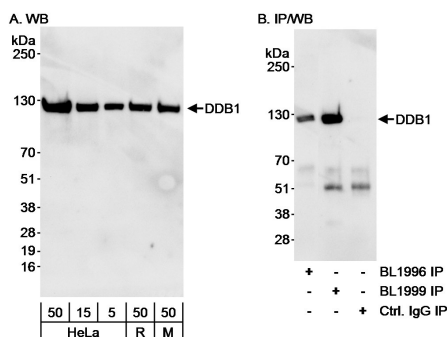
Applications: Optimal working dilutions should be determined experimentally by the investigator. Prepare working dilution immediately before use. Suggested starting dilutions are as follows:

Western Blot: 1:1,000 - 1:10,000.

Immunoprecipitation: 2 to 5 mcg/mg lysate.

Immunohistochemistry: not tested.

Immunocytochemistry: not tested



Detection of Human and Mouse DDB1 by Western Blot and Human DDB1 by Immunoprecipitation. *Samples:* Whole cell lysate from HeLa (5, 15, and 50 mcg for WB; 1 mg for IP), Ramos (R; 50 mcg) and mouse NIH3T3 (M; 50 mcg) cells. *Antibody:* Affinity purified rabbit anti-DDB1 antibody BL1999 (Cat. No. A300-462A) used at 0.1 mcg/ml for WB (A and B) and at 3 mcg/mg lysate for IP. DDB1 was also immunoprecipitated using BL1996, which is an affinity purified antibody to an upstream epitope on DDB1. Immunoprecipitation reactions were controlled using normal rabbit IgG (Ctrl. IgG). *Detection:* Chemiluminescence with an exposure time of 30 seconds (A and B).

Product References: Olma et al., *J. Cell Sci.* 122 (7):1035-1044, 2009.
Maddika and Chen. *Nat Cell Biol* 11 (4):409-419, 2009.

Catalog No.

A300-462A

MATERIAL SAFETY DATA SHEET

Contents Description

This product contains Rabbit immunoglobulin G (IgG) protein in Tris-buffered Saline containing 0.1% BSA containing 0.09% Sodium Azide.

Hazardous Ingredients

Rabbit IgG Protein - No known toxicity for this biological material.

Sodium Azide (NaN_3) - AZIDE FORMS EXPLOSIVE CHEMICAL COMPOUNDS WITH LEAD AND COPPER PLUMBING. CARE MUST BE TAKEN TO WASH WASTE DOWN DRAINS WITH LARGE VOLUMES OF WATER.
LD50 oral mouse - 27 mg/kg.

Wash all affected areas with large volumes of water and if swallowed consult your physician immediately.

The above information is believed to be correct but does not purport to be all-inclusive and is intended to be used only as a guide. Bethyl Laboratories, Inc. shall not be liable or responsible in any way for use of either this information or the material supplied. Disposal of hazardous material may be subject to federal, state, or local laws or regulations.