

Phospho RNA Polymerase II (S2) Antibody

Affinity Purified

Produced in Rabbit



DATA SHEET

Catalog No.

A300-654A

Storage: 2-8° C

Amount: 0.1 ml at 0.2 mg/ml

Buffer: Tris-buffered Saline containing 0.1% BSA with 0.09% Sodium Azide

Shelf Life: 1 year from date of receipt

Production Procedures: Antibody was affinity purified using an epitope specific to Phospho RNA Polymerase II (S2) immobilized on solid support.

Immunogen for A300-654A was a phosphorylated synthetic peptide, which represented a portion of human RNA Polymerase II (GeneID 5430) around serine 2 of the C-terminal repeat YSPTSPS.

Immunoglobulin concentration was determined by extinction coefficient: absorbance at 280 nm of 1.4 equals 1.0 mg of IgG.

Alternate Names: RPol2, RPol-2, RnaPol2, RnaPol-2, PolR2, PolR-2, RNA Polymerase II, POLRA, Polymerase (RNA) II (DNA directed) Polypeptide A, RpIILS, DNA-Directed RNA Polymerase II largest subunit, hRPB220, RNA Polymerase II 220 kDa subunit.

Country of Origin: USA

Notes: Centrifuge tube to remove product from lid.

For In vitro laboratory use only. Not for any clinical, therapeutic, or diagnostic use in humans or animals. Not for animal or human consumption.

Related Products:	Rabbit anti-Raptor Antibody, Affinity Purified	A300-553A
	Rabbit anti-Phospho RNA Polymerase II (S5) Antibody, Affinity Purified	A300-655A
	Rabbit anti-MED12 Antibody, Affinity Purified	A300-774A
	Rabbit anti-MED18 Antibody, Affinity Purified	A300-777A
	Rabbit anti-SUPT6H Antibody, Affinity Purified	A300-801A
	Rabbit anti-SUPT6H Antibody, Affinity Purified	A300-802A
	Rabbit anti-SUPT6H Antibody, Affinity Purified	A300-803A
	Rabbit anti-TCEB3 Antibody, Affinity Purified	A300-942A
	Rabbit anti-TCEB3 Antibody, Affinity Purified	A300-943A
	Rabbit anti-TCEB3 Antibody, Affinity Purified	A300-944A
	RNA Polymerase II Antibody AbVantage™ Pack	A310-190A
	Phospho RNA Polymerase II (S2) Blocking Peptide	BP300-654P

Phospho RNA Polymerase II (S2) Antibody

Catalog No.

A300-654A

Reactivity: Human. Other species have not been tested.

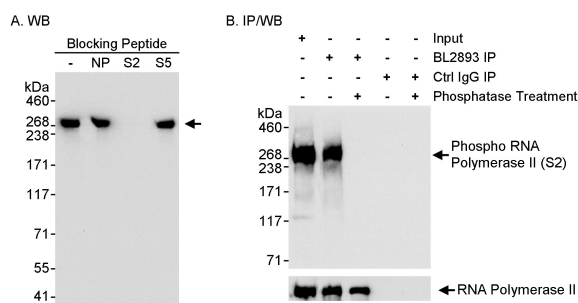
Applications: Optimal working dilutions should be determined experimentally by the investigator. Prepare working dilution immediately before use. Suggested starting dilutions are as follows:

Western Blot: 1:2,500 - 1:20,000

Immunoprecipitation: not tested

Immunohistochemistry: not tested

Immunocytochemistry: not tested



Detection of Phospho RNA Polymerase II (S2) in Whole Cell Lysates and Immunoprecipitates.

Samples: Whole cell lysate (50 mcg for A and Input for B; 1 mg for IP, 20% of IP loaded) from HeLa cells. In B, immunoprecipitates were either mock treated or treated with lambda phosphatase. **Antibody:** Affinity purified rabbit anti-Phospho RNA Polymerase II (S2) antibody BL2894 (Cat. No. A300-654A) used for WB at 0.02 mcg/ml (A) and 0.1 mcg/ml (B). In A, BL2894 was pre-incubated without peptide (-), with nonphosphorylated peptide (NP), with phosphorylated S2 peptide, or with phosphorylated S5 peptide. In B, RNA Polymerase II was immunoprecipitated using rabbit anti-RNA Polymerase II antibody BL2893 (Cat. No. A300-653A) at 3 mcg/mg lysate. Immunoprecipitates were either mock treated or treated with lambda phosphatase. For blotting immunoprecipitated RNA Polymerase II, ReliaBLOT™ Reagents and Procedures (WB120) were used. **Detection:** Chemiluminescence with a exposure times of 10 seconds.

Product References: Yakir et al., Plant Physiol. 150 (2):844-857, 2009.
Nordick et al., Eukaryotic Cell 7 (7):1158-1167, 2008.
Leuenroth and Crews. Cancer Res 68 (13):5257-5266, 2008.

Phospho RNA Polymerase II (S2) Antibody

Catalog No.

A300-654A

MATERIAL SAFETY DATA SHEET

Contents Description

This product contains Rabbit immunoglobulin G (IgG) protein in Tris-buffered Saline containing 0.1% BSA with 0.09% Sodium Azide.

Hazardous Ingredients

Rabbit IgG Protein - No known toxicity for this biological material.

Sodium Azide (NaN_3) - AZIDE FORMS EXPLOSIVE CHEMICAL COMPOUNDS WITH LEAD AND COPPER PLUMBING. CARE MUST BE TAKEN TO WASH WASTE DOWN DRAINS WITH LARGE VOLUMES OF WATER.
LD50 oral mouse - 27 mg/kg.

Wash all affected areas with large volumes of water and if swallowed consult your physician immediately.

The above information is believed to be correct but does not purport to be all-inclusive and is intended to be used only as a guide. Bethyl Laboratories, Inc. shall not be liable or responsible in any way for use of either this information or the material supplied. Disposal of hazardous material may be subject to federal, state, or local laws or regulations.

Gentaur Molecular Products
Voortstraat 49
1910 Kampenhout, Belgium