



## VprBP Antibody AbVantage™ Pack

*Affinity Purified*

### Catalog No.

A310-669A

**Contents:** Rabbit anti-VprBP A301-887A  
Rabbit anti-VprBP A301-888A

**Storage:** 2-8° C

**Shelf Life:** 1 year from date of receipt

**Notes:** Centrifuge tube to remove product from lid.

For In vitro laboratory use only. Not for any clinical, therapeutic, or diagnostic use in humans or animals. Not for animal or human consumption.

**This product may not be resold or modified for resale without the prior written approval of Bethyl Laboratories, Inc.**

**Alternative Names** VprBP, Vpr (HIV-1) binding protein, DCAF1, DDB1- and CUL4-associated factor 1, RIP.

**Country of Origin:** USA

# VprBP Antibody

*Affinity Purified*

*Produced in Rabbit*

## Catalog No.

A301-887A

---

**Storage:** 2-8° C

**Amount:** 0.1 ml at 0.2 mg/ml

**Buffer:** Tris-buffered Saline containing 0.1% BSA with 0.09% Sodium Azide

**Shelf Life:** 1 year from date of receipt

**Production Procedures:** Antibody was affinity purified using an epitope specific to VprBP immobilized on solid support.

The epitope recognized by A301-887A maps to a region between residue 25 and 75 of human Vpr (HIV-1) binding protein using the numbering given in entry NP\_055518.1 (GeneID 9730).

Immunoglobulin concentration was determined by extinction coefficient: absorbance at 280 nm of 1.4 equals 1.0 mg of IgG.

**Alternate Names:** VPRBP, Vpr (HIV-1) binding protein, DCAF1, DDB1- and CUL4-associated factor 1, RIP.

**Country of Origin:** USA

**Notes:** Centrifuge tube to remove product from lid.

For In vitro laboratory use only. Not for any clinical, therapeutic, or diagnostic use in humans or animals. Not for animal or human consumption.

**This product may not be resold or modified for resale without the prior written approval of Bethyl Laboratories, Inc.**

<b>Related Products:</b>	Rabbit anti-VprBP Antibody, Affinity Purified	A301-888A
	VprBP Antibody AbVantage™ Pack	A310-669A
	VprBP Blocking Peptide	BP301-887

## Catalog No.

A301-887A

**Reactivity:** Human and mouse. Other species have not been tested.

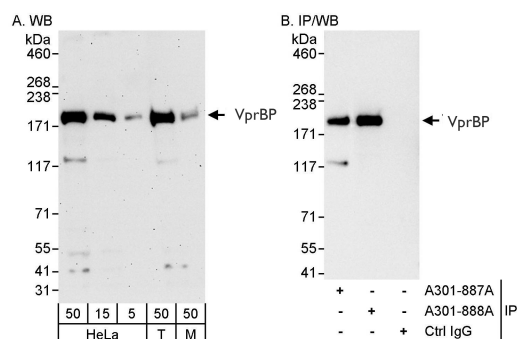
**Applications:** Optimal working dilutions should be determined experimentally by the investigator. Prepare working dilution immediately before use. Suggested starting dilutions are as follows:

Western Blot: 1:2,000 to 1:10,000.

Immunoprecipitation: 2 to 5 mcg/mg lysate.

Immunohistochemistry: Not tested.

Immunocytochemistry: Not tested.



**Detection of Human and Mouse VprBP by Western Blot (h&m) and Immunoprecipitation (h).** *Samples:* Whole cell lysate from HeLa (5, 15 and 50 mcg for WB; 1 mg for IP, 20% of IP loaded), 293T (T; 50 mcg), and mouse NIH3T3 (M; 50 mcg) cells. *Antibodies:* Affinity purified rabbit anti-VprBP antibody A301-887A used for WB at 0.04 mcg/ml (A) and 1 mcg/ml (B) and used for IP at 3 mcg/mg lysate. VprBP was also immunoprecipitated by rabbit anti-VPRBP antibody A301-888A, which recognizes a downstream epitope. For blotting immunoprecipitated VprBP, the ReliaBLOT® Reagents and Procedures (Cat. No. WB120) were used. *Detection:* Chemiluminescence with exposure times of 3 minutes (A) and 10 seconds (B).

**Product References:** Maddika and Chen. Nat Cell Biol 11 (4):409-419, 2009.

**Catalog No.**

A301-887A

---

## **MATERIAL SAFETY DATA SHEET**

### **Contents Description**

This product contains Rabbit immunoglobulin G (IgG) protein in Tris-buffered Saline containing 0.1% BSA with 0.09% Sodium Azide.

### **Hazardous Ingredients**

Rabbit IgG Protein - No known toxicity for this biological material.

Sodium Azide ( $\text{NaN}_3$ ) - AZIDE FORMS EXPLOSIVE CHEMICAL COMPOUNDS WITH LEAD AND COPPER PLUMBING. CARE MUST BE TAKEN TO WASH WASTE DOWN DRAINS WITH LARGE VOLUMES OF WATER.  
LD50 oral mouse - 27 mg/kg.

Wash all affected areas with large volumes of water and if swallowed consult your physician immediately.

The above information is believed to be correct but does not purport to be all-inclusive and is intended to be used only as a guide. Bethyl Laboratories, Inc. shall not be liable or responsible in any way for use of either this information or the material supplied. Disposal of hazardous material may be subject to federal, state, or local laws or regulations.

# VprBP Antibody

*Affinity Purified*

*Produced in Rabbit*

## Catalog No.

A301-888A

---

**Storage:** 2-8° C

**Amount:** 0.1 ml at 0.2 mg/ml

**Buffer:** Tris-buffered Saline containing 0.1% BSA with 0.09% Sodium Azide

**Shelf Life:** 1 year from date of receipt

**Production Procedures:** Antibody was affinity purified using an epitope specific to VprBP immobilized on solid support.

The epitope recognized by A301-888A maps to a region between residue 1457 and 1507 of human Vpr (HIV-1) binding protein using the numbering given in entry NP\_055518.1 (GeneID 9730).

Immunoglobulin concentration was determined by extinction coefficient: absorbance at 280 nm of 1.4 equals 1.0 mg of IgG.

**Alternate Names:** VprBP, Vpr (HIV-1) binding protein, DCAF1, DDB1- and CUL4-associated factor 1, RIP.

**Country of Origin:** USA

**Notes:** Centrifuge tube to remove product from lid.

For In vitro laboratory use only. Not for any clinical, therapeutic, or diagnostic use in humans or animals. Not for animal or human consumption.

**This product may not be resold or modified for resale without the prior written approval of Bethyl Laboratories, Inc.**

<b>Related Products:</b>	Rabbit anti-VprBP Antibody, Affinity Purified	A301-887A
	VprBP Antibody AbVantage™ Pack	A310-669A
	VprBP Blocking Peptide	BP301-888

## Catalog No.

A301-888A

**Reactivity:** Human. Other species have not been tested.

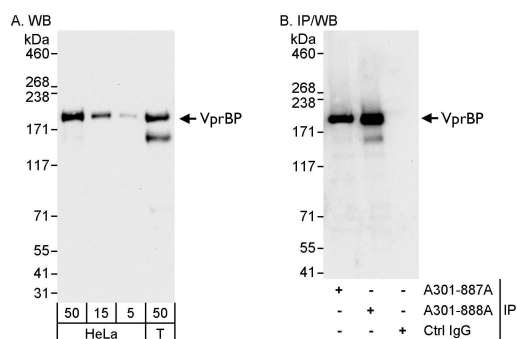
**Applications:** Optimal working dilutions should be determined experimentally by the investigator. Prepare working dilution immediately before use. Suggested starting dilutions are as follows:

Western Blot: 1:2,000 to 1:10,000.

Immunoprecipitation: 2 to 5 mcg/mg lysate.

Immunohistochemistry: Not tested.

Immunocytochemistry: Not tested.



**Detection of Human VprBP by Western Blot and Immunoprecipitation.** *Samples:* Whole cell lysate from HeLa (5, 15 and 50 mcg for WB; 1 mg for IP, 20% of IP loaded) and 293T (T; 50 mcg) cells. *Antibodies:* Affinity purified rabbit anti-VprBP antibody A301-888A used for WB at 0.04 mcg/ml (A) and 1 mcg/ml (B) and used for IP at 3 mcg/mg lysate. VprBP was also immunoprecipitated by rabbit anti-VPRBP antibody A301-887A, which recognizes an upstream epitope. For blotting immunoprecipitated VprBP, the ReliaBLOT® Reagents and Procedures (Cat. No. WB120) were used. *Detection:* Chemiluminescence with exposure times of 10 seconds (A) and 3 seconds (B).

**Product References:** Maddika and Chen. Nat Cell Biol 11 (4):409-419, 2009.

**Catalog No.**

A301-888A

---

**MATERIAL SAFETY DATA SHEET**

**Contents Description**

This product contains Rabbit immunoglobulin G (IgG) protein in Tris-buffered Saline containing 0.1% BSA with 0.09% Sodium Azide.

**Hazardous Ingredients**

Rabbit IgG Protein - No known toxicity for this biological material.

Sodium Azide ( $\text{NaN}_3$ ) - AZIDE FORMS EXPLOSIVE CHEMICAL COMPOUNDS WITH LEAD AND COPPER PLUMBING. CARE MUST BE TAKEN TO WASH WASTE DOWN DRAINS WITH LARGE VOLUMES OF WATER.  
LD50 oral mouse - 27 mg/kg.

Wash all affected areas with large volumes of water and if swallowed consult your physician immediately.

The above information is believed to be correct but does not purport to be all-inclusive and is intended to be used only as a guide. Bethyl Laboratories, Inc. shall not be liable or responsible in any way for use of either this information or the material supplied. Disposal of hazardous material may be subject to federal, state, or local laws or regulations.