



Monoclonal Antibody to alpha Tubulin / TUBA1B -Purified

Alternate names: Tubulin alpha-1B chain, Tubulin alpha-ubiquitous chain, Alpha-tubulin ubiquitous, Tubulin

K-alpha-1

Catalog No.: AM08323PU-N

Quantity: 50 µg

Concentration: 1.0 mg/ml

Background: Tubulin is the major building block of microtubules. This intracellular cylindrical filamentous structure is present in almost all eukaryotic cells. Microtubules function as structural and mobile elements in mitosis, intracellular transport, flagellar movement and in the cytoskeleton. Tubulin is a heterodimer which consists of alpha tubulin and beta tubulin.

Uniprot ID: P68363

NCBI: NP_006073

GeneID: 10376

Host / Isotype: Mouse / IgM

Clone: TU-16

Immunogen: Porcine brain microtubule alpha-Tubulin purified protein.

Format: State: Liquid purified Ig fraction.

Purification: Ammonium Sulphate Precipitation.

Buffer System: PBS, pH 7.4 containing 15 mM Sodium Azide as preservative.

Applications: ELISA.

Western blot: 1-2 µg/ml.

Immunocytochemistry.

Immunoprecipitation: 1-2 µg/ml.

Immunohistochemistry on Paraffin Sections: 10 µg/ml.

Other applications not tested. Optimal dilutions are dependent on conditions and should be determined by the user.

Specificity: Reacts with alpha-Tubulin of all tested species, under denaturing and non-denaturing conditions.

Species Reactivity: Tested: Porcine.

Expected from sequence similarity: Human.

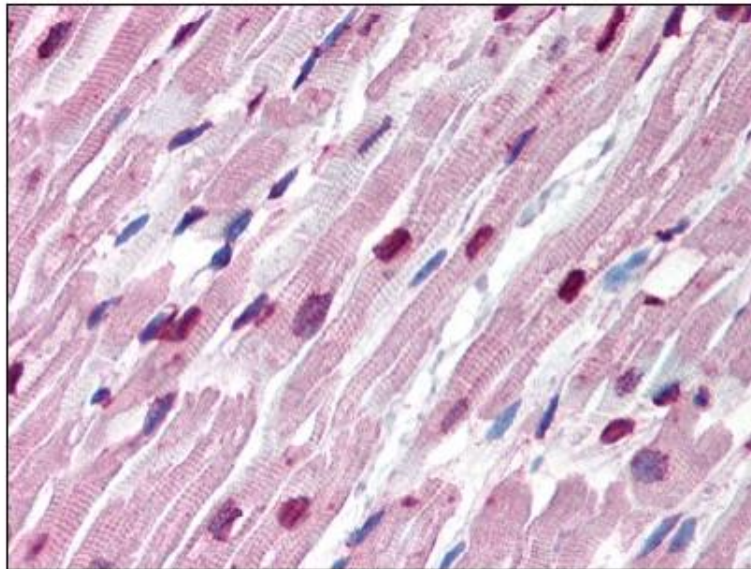
Add. Information: Predicted Molecular Weight: 54 kDa.

Storage: Store the antibody undiluted at 2-8°C

DO NOT FREEZE!

Shelf life: one year from despatch.

Pictures:



AM08323PU-N at 10 µg/ml staining alpha Tubulin in Pig heart by Immunohistochemistry, Formalin-fixed, paraffin-embedded tissue.

Recommended
Isotype Controls:

SM13P