

Polyclonal Antibody to Melanoma gp100 - Purified

Alternate names: SILV, D12S53E, PMEL17, ME20-M, Melanocyte protein Pmel 17, Silver locus protein

homolog, Melanocyte lineage-specific antigen GP100, Melanoma-associated ME20 antigen

Catalog No.: AP15642PU-N

Quantity: 1.0 ml

Background: Melanoma gp100, a melanosomal matrix protein whose expression is closely correlated with cellular melanin content and which is a frequent melanoma tumor antigen recognized by cytotoxic T lymphocytes. It is a likely candidate gene for some cases of human oculocutaneous albinism not associated with known albinism loci.

Uniprot ID: P40967

NCBI: 9606

GenelD: 6490

Host / Isotype: Rabbit

Immunogen: Recom

Format: State: Liquid purified Ig

Buffer System: 10mM PBS, pH 7.4 with BSA and Sodium Azide

Applications: Immunohistochemistry on paraffin sections: 1/50 for 10 min at RT; Staining of formalin-fixed tissues requires boiling tissue sections in 10mM citrate buffer, pH 6.0 for 10 min followed by cooling at RT for 20 min.

Positive Control: Melanoma

Other applications not tested. Optimal dilutions are dependent on conditions and should be determined by the user.

Specificity: This antibody specifically recognizes a protein in melanocytes and melanomas. Intra-dermal nevi, normal adult melanocytes, and non-melanocytic cells are negative. It does not stain tumor cells of epithelial, lymphoid, glial, or mesenchymal origin.

Species: Human.

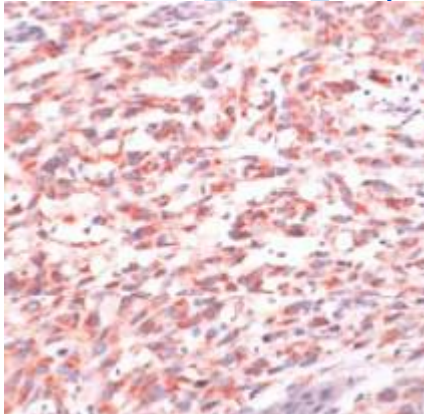
Others not tested.

Storage: Store the antibody undiluted at 2-8°C.

DO NOT FREEZE!

Shelf life: one year from despatch.

For research and in vitro use only. Not for diagnostic or therapeutic work.



Melanoma stained with Anti-melanoma gp100