



### Polyclonal Antibody to TUBA8 / TUBAL2 (N-term)

Alternate names: Tubulin alpha-8 chain, Alpha-tubulin 8, Tubulin alpha chain-like 2

Catalog No.: AP18234PU-N

Quantity: 0.1 mg

Concentration: 0.25 mg/ml

Background: Tubulin is the major constituent of microtubules. It binds two moles of GTP, one at an exchangeable site on the beta chain and one at a non-exchangeable site on the alpha-chain.

Uniprot ID: Q9NY65

NCBI: NP\_061816

GeneID: 51807

Host / Isotype: Rabbit

Immunogen: KLH conjugated synthetic peptide selected from the N-terminal region of human TUBA8

Format: State: Liquid purified Ig

Purification: Affinity chromatography

Buffer System: PBS with 0.09% (W/V) sodium azide

Applications: ELISA: 1/1,000.

Western blotting: 1/100 - 1/500.

Other applications not tested. Optimal dilutions are dependent on conditions and should be determined by the user.

Specificity: This antibody reacts to TUBA8.

Species: Human.

Others not tested.

Storage: Store the antibody undiluted at 2-8°C for one month or (in aliquots) at -20°C for longer.

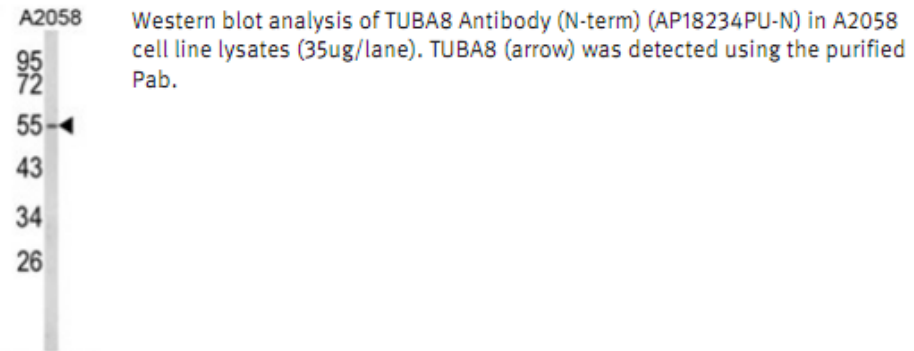
Avoid repeated freezing and thawing.

Shelf life: one year from despatch.

General References: 1.Stanchi,F., et.al., Biochem. Biophys. Res. Commun. 270 (3), 1111-1118 (2000)

2.Feierbach,B., et.al., J. Cell Biol. 144 (1), 113-124 (1999)

**Pictures:**



**Recommended  
Control Peptides:**

AP18234CP-N

GENTIA