

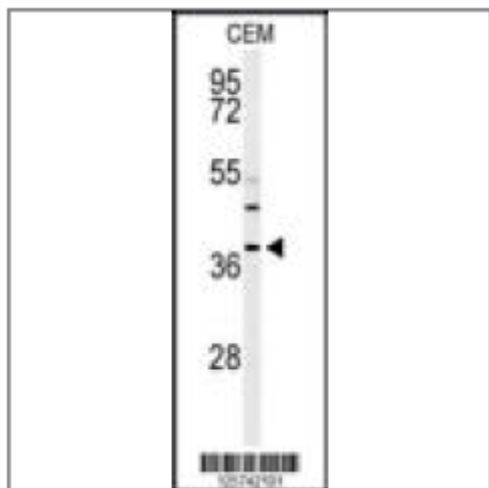
## RNASEH2B Antibody (Center)

Peptide Affinity Purified Rabbit Polyclonal Antibody (Pab)

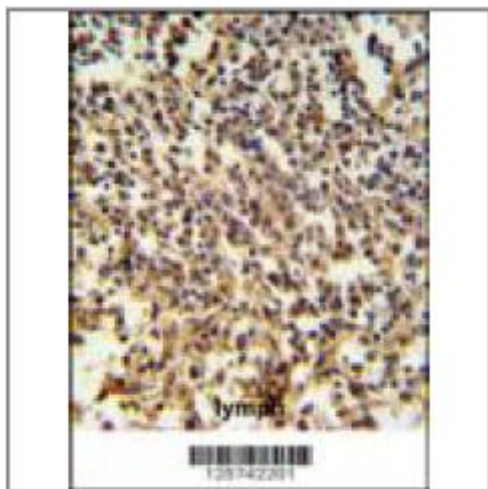
<b>Catalog #</b>	<b>Applications:</b>	<b>Reactivity:</b>	<b>Accessions:</b>
AP4774c	WB, IHC, E	H	<a href="#">Q5TBB1</a>
<b>Concentration:</b>	<b>Size:</b>	<b>Isotype:</b>	<b>Clone Name:</b>
0.25 mg/ml	0.1 mg	Rabbit Ig	RB25742

**Application Data:**      **Calculated**      **MW: 35139 Da**

Western blot analysis of RNASEH2B Antibody (Center) (Cat. #AP4774c) in CEM cell line lysates (35ug/lane). RNASEH2B (arrow) was detected using the purified Pab.



RNASEH2B Antibody (Center) (Cat. #AP4774c) IHC analysis in formalin fixed and paraffin embedded human lymph tissue followed by peroxidase conjugation of the secondary antibody and DAB staining. This data demonstrates the use of the RNASEH2B Antibody (Center) for immunohistochemistry. Clinical relevance has not been evaluated.



**Gene ID: Gene Symbol:**

79621 RNASEH2B

**Other Names:**

Deleted in lymphocytic leukemia 8; Aicardi-Goutieres syndrome 2 protein, AGS2;  
Ribonuclease HI subunit  
B; Ribonuclease H2 subunit B, RNase H2 subunit B, DLEU8, RNASEH2B

**Target/Specificity:**

This RNASEH2B antibody is generated from rabbits immunized with a KLH conjugated synthetic peptide between 136~166 amino acids from the Central region of human RNASEH2B

**Application Notes:**

The suggested dilution is:

ELISA 1:1,000

Western blotting 1:100~500

Immunohistochemistry 1:50~100

**Format:**

Purified polyclonal antibody supplied in PBS with 0.09% (W/V) sodium azide. This antibody is purified through a protein A column, followed by peptide affinity purification.

**Storage:**

Maintain refrigerated at 2-8°C for up to 6 months. For long term storage store at -20°C in small aliquots to prevent freeze-thaw cycles.

**Precautions:**

RNASEH2B Antibody (Center) is for research use only and not for use in diagnostic or therapeutic procedures.