

CYCLOSCOPE-MM is a kit used for the analysis of DNA in plasma cells. It focuses on DNA studies of myeloma plasma cells in bone marrow samples from patients with multiple myeloma (MM) and monoclonal gammopathies of undetermined significance (MGUS).

INTRODUCTION

MM is a lymphoproliferative disorder characterized by a clonal expansion of B cells in the last step of differentiation (plasma cells). An accumulation of myeloma plasma cells coming from one or more clones is observed in the bone marrow of patients with MM.

Cell cycle studies in MM have demonstrated to have an important prognostic impact; also the analysis of DNA aneuploidy has been considered to be a powerful tool for the detection of residual disease in these patients and to contribute to the differential diagnosis between MM and MGUS.

PROCEDURE

This kit has been optimized in order to identify plasma cells in patients with MM and MGUS with the purpose of studying the existence of DNA aneuploidy and the proliferative rate (proportion of cells in G0/G1, S and G2/M phases of cell cycle) of this cell population.

The proposed method is sensitive and specific, allowing the identification of more than 95% of myelomatous plasma cells. The possible contamination with residual plasma cells (non myelomatous plasma cells) is irrelevant since the percentage of cells expressing CD38 with high intensity (CD38+++ is usually less than 1% in normal bone marrow (in general around 0,25%).

GOALS

- 1.-To study the cell cycle distribution in myelomatous plasma cells.
- 2.-To detect minimal residual disease in patients with MGUS and MM in complete remission. Aneuploid criteria is defined by the presence of two or more different peaks of G0/G1 cells.

CLINICAL UTILITY

- 1.- Cell cycle
 - 1a.- Prognostic evaluation of MM patients. Recently, it has been described that the number of bone marrow plasma cells in S-phase (S) in patients with MM is an independent prognostic factor.
 - 1b.- To monitorize disease progression.
- 2.- Minimal residual disease
 - 2a.- Enumeration of clonal plasma cells in bone marrow samples from patients in complete remission, including samples which will be used for autologous transplantation.
 - 2b.- Detection of aneuploid plasma cells in peripheral blood and/or apheresis samples which will be used for autologous transplantation.

SENSITIVITY

The lowest level for detection of aneuploid plasma cells in order to detect minimal residual disease is 10^{-4} (one cell among 10.000 normal cells) in bone marrow samples.

REAGENTS

- Mixture of Primary Antibodies: Vial including a mixture of purified murine monoclonal antibodies specific for the detection of antigens present in human plasma cells (CD38 and CD138). Antibodies are diluted in PBS with 0,1% NaN₃ as preservative. Ready to use. Add 20 µl / test. Presentation: 400 µl / vial.
- Secondary Antibody: FITC labelled IgG goat anti mouse IgG F(ab)[']₂. Antibodies are diluted in PBS with 0,1% NaN₃ as preservative. Ready to use. Add 20 µl/test. Presentation: 400 µl / vial.
- Lysing Solution: 40 ml vial containing an erythrocyte lysing solution. Add 2 ml / test.
- DNA Labelling Buffer: 20 ml vial containing detergent, propidium iodide and RNase for DNA staining. Add 1ml / test.

PROTOCOL

- 1.-Perform a white blood cell count of the sample. In case of using bone marrow samples, prior to cell enumeration pass them 3 or 4 times through a syringe in order to disintegrate the sample. Take 10⁶ cells from the sample, in a volume of 100-150 µl.
- 2.-Labelling of surface antigens characteristic of human plasma cells:
 - Add 20 µl of the primary antibody mixture to each tube. Mix gently.
 - Incubate 10' at room temperature (darkness is not necessary).
 - In order to wash out the excess of primary antibodies:
 - Fill each tube with PBS (2ml/tube).
 - Centrifuge for 5' at 540g.
 - Discard the supernatant.
 - Resuspend the cell pellet.
 - Add 20 µl of the secondary antibody reagent to each tube. Mix gently.
 - Incubate 10' at room temperature in the dark.
 - In order to wash out the excess of secondary antibody:
 - Fill each tube with PBS.
 - Centrifuge for 5' at 540g.
 - Discard the supernatant.
 - Resuspend the cell pellet.
- 3.-Add 2 ml of erythrocyte lysing solution to lyse mature red cells present in the sample. Mix gently and incubate during 10' at room temperature in the dark.
- 4.-Wash out the lysing solution:
 - Centrifuge for 5' at 540g.
 - Discard the supernatant and placed each tube inverted in a vertical position over a filter paper in order to eliminate the possible remaining lysing solution from the tube.
 - Resuspend the cell pellet.
- 5.-Add 1ml of DNA labelling solution. Incubate in the dark for 10' at room temperature.
- 6.-Acquire data in a flow cytometer (low speed position). Data acquisition must be performed within the first three hours after sample preparation is finished. Keep tubes at 4°C until data acquisition in performed.

DATA ACQUISITION

Data acquisition can be developed using two different procedures as follows:

Procedure 1 (two steps acquisition)

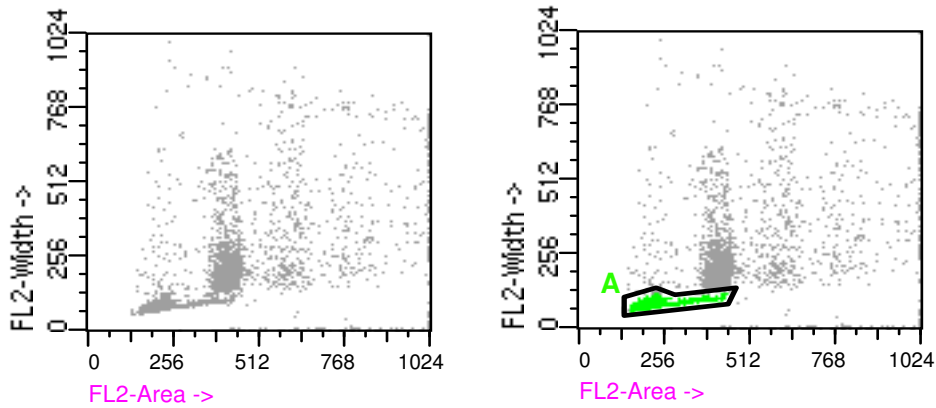
- Acquisition of a minimum of 5000 events (all cells).
- Acquisition with an activated live gate including those cells displaying a high FLI-FITC fluorescence intensity plasma cells). Acquire a minimum of 5000 plasma cells.

Procedure 2. Acquisition in a single step of a number of events (all cells) including a minimum of 5000 plasma cells.

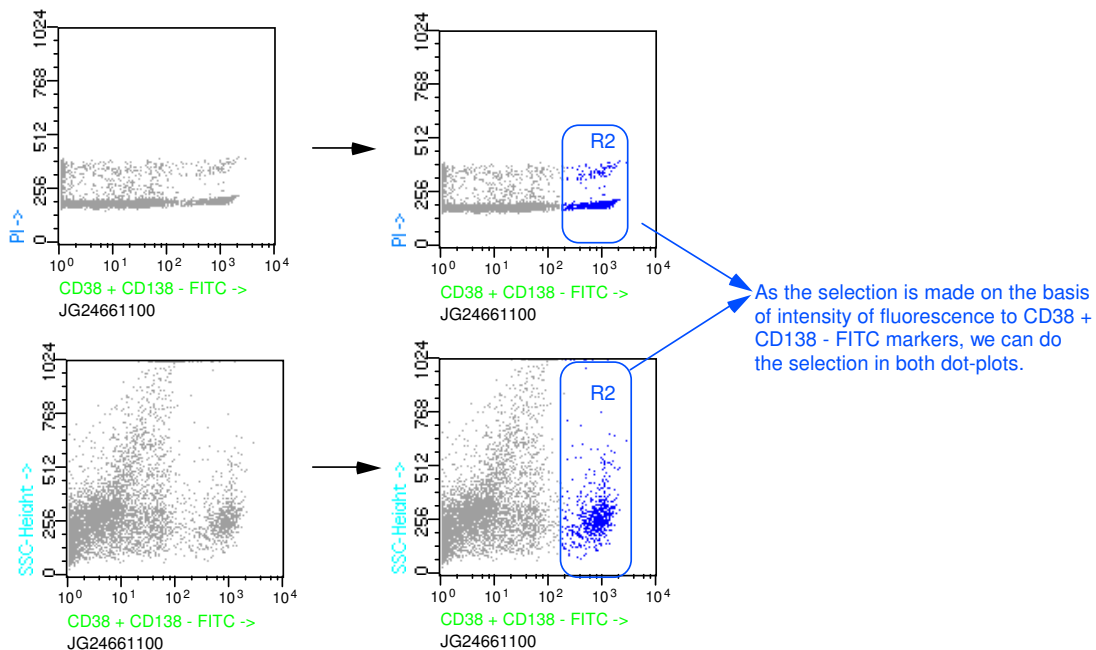
DATA ANALYSIS

General Procedure:

1.- Gate singlets in a FL2-Area/FL2-Width dot plot (in a Becton/Dickinson flow cytometer), in a FL2-Area/FL2-Peak dot plot (instruments from Coulter Corporation) in a FL2-Area/FL2-Peak dot plot (in a Ortho Diagnostic Systems flow cytometer.)



2.- After selecting of singlets, paint a gate on plasma cells according to a high FL1-FITC fluorescence intensity. Using two different colours discriminate between those cells displaying high intensity for FL1-FITC (plasma cells) and the normal bone marrow hematopoietic cells (FL1-FITC^{+/+}).



3a.- Cell cycle estimation. Calculate the percentage of cells in each cell cycle phase using mathematical models included in the specific software programs available in the laboratory.

3b.- Calculate the percentage of aneuploid plasma cells in those cases in which detection of minimal residual diseases is requested.

*Note. For a correct calculation of the cell cycle distribution of a cell population, the coefficient of variation in G0/G1, phase of total cells, must be lower than 5%.

REFERENCES

- 1.- Duque RE, Andreeff M, Braylan RC, Diamond W, Peiper SC. 1993. Consensus Review of the Clinical Utility of DNA Flow Cytometry in Neoplastic Hematopathology. *Cytometry*: 14:492-496.
- 2.- Ocqueteau M, Orfao A, Almeida J, Gonzalez M, Blade J, Garcia-Sanz R, Lopez-Berges MC, Hernandez J, Moro MJ, San Miguel JF. Comparative Analysis of DNA Content in Plasma Cells from Multiple Myeloma and MGUS Patients. *Multiple Myeloma. Advantages in Biology and Treatment*, 52 September 13-14. Vienna, Austria.
- 3.- Orfao A, Garcia-Sanz R, Lopez-Berges MC, Vidriales MB, Gonzalez M, Caballero MD, San Miguel JF. 1994. A New Method for the Analysis of Plasma Cell DNA Content in Multiple Myeloma Samples Using a CD38/Propidium Iodide Double Staining Technique. *Cytometry*, 17: 332339.
- 4.- Terstappen LWMM, Johnsen W, Segers-Nolten IMJ, Loken MR. 1990. Identification and Characterization of Normal Human Plasma Cells in Normal Human Bone Marrow by High Resolution Flow Cytometry. *Blood*, 76:1739-1747.
- 5.- Garcia-Sanz R, Orfao A, Gonzalez M, Moro MJ, Hernandez JM, Ortega F, Borrego D, Carnero M, Casanova F, Jimenez R, Portero JA, San Miguel JF. 1995. Prognostic Implications of DNA Aneuploidy in 156 Untreated Myeloma Patients. *Br.J. Haematol*, 90:106-112.
- 6.- San Miguel J, Garcia-Sanz R, Gonzalez M, Moro MJ, Hernandez JM, Ortega F, Borrego D, Carnero M, Casanova F, Jimenez R, Portero JA, Orfao A. 1995. A New Staging System for Multiple Myeloma Based on the Number of S-Phase Plasma Cells. *Blood*, 85: 448-455.
- 7.-Lima M, Dos Anjos-Teixeira M, Fonseca S, Gonçalves C., Guerra M, Queirós ML, Santos AH, Coutinho A, Pinho L, Marques L, Cunha M, Ribeiro P, Xavier L, Vieira H, Pinto P and Justic B. 2000. Immunophenotypic Aberrations, DNA Content, and Cell Cycle Analysis of Plasma Cells in Patients with Myeloma and Monoclonal Gammopathies. *Blood Cells, Molecules, and Diseases*, 26: 634-645.
- 8.- Santonocito AM, Consoli U, Bagnato S, Milone G, Palumbo GA., Di Raimondo F, Stagno F, Guglielmo P, Giustolisi R. 2004. Flow cytometric detection of aneuploid CD38 plasmacells and CD19 B-lymphocytes in bone marrow, peripheral blood and PBSC harvest in multiple myeloma patients. *Leukemia Research*, 28:469-477.
- 9.- Mateo G, Castellanos M, Rasillo A, C. Gutierrez N, Montalbán Ma.A, Martín Ma.L, Hernández JMa., López-Berges Ma.C, Montejano L, Bladé J, Mateos Ma.V, Sureda A, De la Rubia J, Díaz-Mediavilla J, Pandiella A, Lahuerta JJ, Orfao A and San Miguel JF. 2005. Genetic Abnormalities and Patterns of Antigenic Expression in Multiple Myeloma. *Clinical Cancer Research*, 11: 3661-3667.
- 10.- Scudla V, Ordeltova M, Minarik J, Dusek L, Zemanova M, Bacovsky J. 2006. Prognostic significance of plasma cell propidium iodide and annexin-V indices and their mutual ratio in multiple myeloma. *Neoplasma*, 53:213-8.
- 11.- San Miguel JF, Norma C. Gutiérrez, Mateo G, Orfao A. 2006. Conventional diagnostics in multiple mieloma. *Eur J. Cancer*, 42:1510-9.