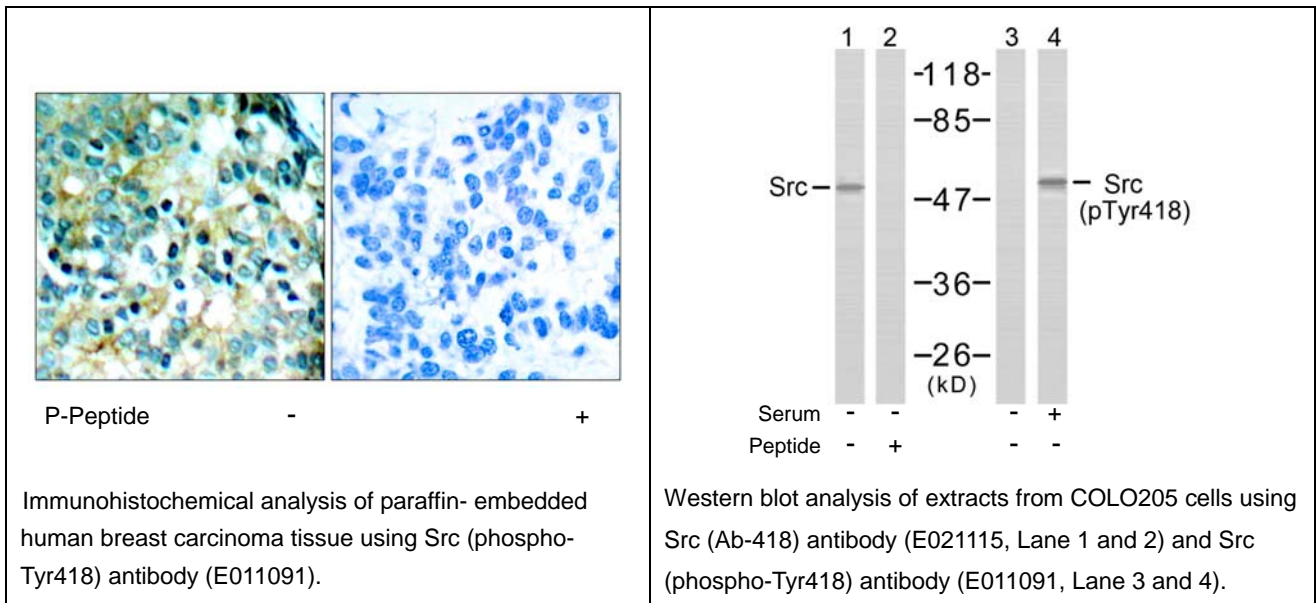


Src (Phospho-Tyr418) Antibody

- Catalog Number:** E011091-1, E011091-2
Amount: 50µg/50µl, 100µg/100µl
Form of Antibody: Rabbit IgG in phosphate buffered saline (without Mg²⁺ and Ca²⁺), pH 7.4, 150mM NaCl, 0.02% sodium azide and 50% glycerol.
Storage/Stability: Store at -20°C/1 year
Immunogen: The antiserum was produced against synthesized phosphopeptide derived from human Src around the phosphorylation site of tyrosine 418 (N-E-Y^P-T-A).
Purification: The antibody was affinity-purified from rabbit antiserum by affinity-chromatography using epitope-specific phosphopeptide. The antibody against non-phosphopeptide was removed by chromatography using non-phosphopeptide corresponding to the phosphorylation site.
Specificity/Sensitivity: Src (phospho-Tyr418) antibody detects endogenous levels of Src only when phosphorylated at tyrosine 418.
Reactivity: Human, Mouse, Rat
Applications: WB: 1:500~1:1000 IHC: 1:50~1:100
Swiss-Prot No. : P12931
References: Dufilho M, et al. (2005) J Biol Chem. 280(43):35999-36006.
 Sanders MA, et al. (2005) J Biol Chem. 280(25): 23516-23522.
 Murugappan S, et al. (2005) Blood. 106(2):550-557.
 Gu JJ, et al. (2005) Blood. 105(8): 3270-3277.



For Research Use Only