

Certification of analysis

Product Name: ELISA Kit for Phospholipase A2, Secreted (sPLA2)

Cat.No. E91077Mu Organism: Mus musculus (Mouse)

Lot. No. L110629736

Introduction

Item	Standard	Test Result																									
Description	This immunoassay kit allows for the specific measurement of sPLA2 concentration in human serum, plasma and other biological fluids.	Conform																									
Identification	Colorimetric	Positive																									
Composition	<table border="0" style="width: 100%;"> <tr> <td style="width: 60%;">Pre-coated, ready to use 96-well strip plate</td> <td style="width: 10%; text-align: center;">1</td> <td rowspan="12" style="width: 30%; vertical-align: middle; text-align: center;">Conform</td> </tr> <tr> <td>Standard (freeze dried)</td> <td style="text-align: center;">2</td> </tr> <tr> <td>Standard Diluent</td> <td style="text-align: center;">1 × 20ml</td> </tr> <tr> <td>Detection Reagent A (green)</td> <td style="text-align: center;">1 × 120µl</td> </tr> <tr> <td>Detection Reagent B (red)</td> <td style="text-align: center;">1 × 120µl</td> </tr> <tr> <td>Assay Diluent A (2 x concentrate)</td> <td style="text-align: center;">1 × 6ml</td> </tr> <tr> <td>Assay Diluent B(2 x concentrate)</td> <td style="text-align: center;">1 × 6ml</td> </tr> <tr> <td>TMB Substrate</td> <td style="text-align: center;">1 × 9ml</td> </tr> <tr> <td>Stop Solution</td> <td style="text-align: center;">1 × 6ml</td> </tr> <tr> <td>Wash Buffer(30 x concentrate)</td> <td style="text-align: center;">1 × 20ml</td> </tr> <tr> <td>Plate sealer for 96 wells</td> <td style="text-align: center;">4</td> </tr> <tr> <td>Instruction manual</td> <td style="text-align: center;">1</td> </tr> </table>	Pre-coated, ready to use 96-well strip plate	1	Conform	Standard (freeze dried)	2	Standard Diluent	1 × 20ml	Detection Reagent A (green)	1 × 120µl	Detection Reagent B (red)	1 × 120µl	Assay Diluent A (2 x concentrate)	1 × 6ml	Assay Diluent B(2 x concentrate)	1 × 6ml	TMB Substrate	1 × 9ml	Stop Solution	1 × 6ml	Wash Buffer(30 x concentrate)	1 × 20ml	Plate sealer for 96 wells	4	Instruction manual	1	
Pre-coated, ready to use 96-well strip plate	1	Conform																									
Standard (freeze dried)	2																										
Standard Diluent	1 × 20ml																										
Detection Reagent A (green)	1 × 120µl																										
Detection Reagent B (red)	1 × 120µl																										
Assay Diluent A (2 x concentrate)	1 × 6ml																										
Assay Diluent B(2 x concentrate)	1 × 6ml																										
TMB Substrate	1 × 9ml																										
Stop Solution	1 × 6ml																										
Wash Buffer(30 x concentrate)	1 × 20ml																										
Plate sealer for 96 wells	4																										
Instruction manual	1																										
Assay Range	31.2-2,000 pg/ml	Conform																									

Sensitivity

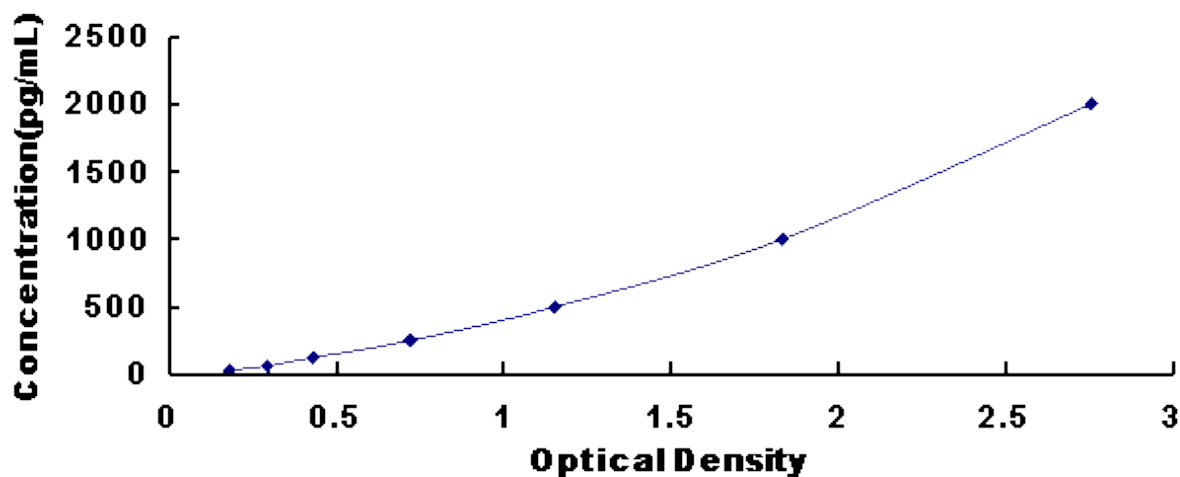
The minimum detectable dose of human sPLA2 is typically less than 12.2pg/ml.

The sensitivity of this assay, or Lower Limit of Detection (LLD) was defined as the lowest protein concentration that could be differentiated from zero. It was determined the mean O.D. Value of 20 replicates of the zero standard added by their three standard deviations.

Standard curve

The standard curve is provided for demonstrated only. The client should perform the standard test in each independent experiment.

pg/ml	Standard		Average	Corrected
0	0.093	0.091	0.092	—
31.2	0.281	0.299	0.29	0.198
62.5	0.375	0.362	0.3685	0.2765
125	0.559	0.53	0.5445	0.4525
250	0.873	0.848	0.8605	0.7685
500	1.315	1.299	1.307	1.215
1000	1.853	1.869	1.861	1.769
2000	2.684	2.81	2.747	2.655



Precision

Intra-assay Precision (Precision within an assay): Three samples of known concentration were tested twenty times on one plate to assess intra-assay precision.

Inter-assay Precision (Precision between assays): Three samples of known concentration were tested in twenty assays to assess inter-assay precision.

Sample	Intra-assay Precision			Inter-assay Precision		
	1	2	3	1	2	3
n	20	20	20	20	20	20
Mean (pg/ml)	78.6	234.8	1621.7	72.1	243.1	1586.9
SD	4.6	16.0	102.2	5.7	20.4	112.7
CV (%)	5.9	6.8	6.3	7.9	8.4	7.1

Approved Date:

Q.C.Manager Signed: