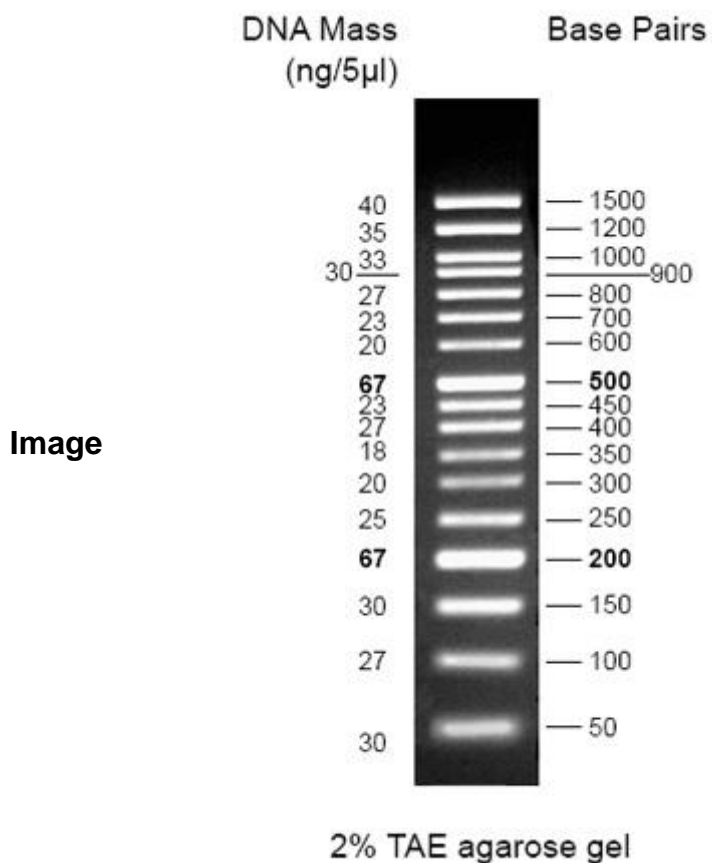


G016

Range: 50bp-1.5kb

Number of Bands: 17



Package	500ul/100 loads
Suggested Load	5ul
Source	PCR products and double-stranded DNA digested with appropriate restriction enzymes, are phenol extracted and equilibrated to 10mM Tris-HCl (pH 8.0) and 1mM EDTA.
Storage	Store @ 25°C for 6 months or -20°C for 24 months.