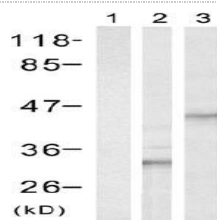


#G162 Rabbit Polyclonal Anti-His Tag

Antibody Type Primary Tag Antibody

Pictures



Western blot analysis of extract from control 293 cells (Lane 1), transfected with His-tagged S6 (Lane 2) and transfected with His-tagged CREB (Lane 3) using His-tag polyclonal antibody (Cat#G162).

Immunogen The antiserum was produced by immunizing rabbit with synthesized peptide containing the His epitope (H-H-H-H-H).

Specificity His-Tag polyclonal antibody detects His-tagged proteins overexpressed in cells. The antibody recognizes the His-tag fused to either the amino- or carboxy- terminus of targeted proteins in transfected mammalian cells.

Tested Applications ELISA, WB, IP, IF, IHC

Application Notes ELISA 1: 2500; WB 1:500-1000; IP 5 µg/sample; IF 5µg/mL; IHC 5 µg/mL

Raised In Rabbit

Clonality Polyclonal

Isotype IgG

Purity Affinity purified

Storage Buffer TBS, 50% glycerol, pH 7.4 with 0.01% sodium azide.

Formulation Liquid

Concentration 100ug/100ul

Storage Stable for 1 year at -20°C from the date of shipment. For maximum recovery of product, centrifuge the original vial after thawing and prior to opening the cap. Aliquot to avoid repeated freezing and thawing. Aliquot will be stable at 4°C for 3 months.

References Terpe K. et al. (2003) Appl Microbiol Biotechnol; 60(5):523-533.
Xu L. et al. (2006) Cell Mol Immunol; 3(2):139-143.
Els Conrath, K., et al. (2001) J. Biol. Chem. 276: 7346-7350.

Caution Anti-His Tag (Rabbit Polyclonal) is for research use only and is not intended for therapeutic or diagnostic applications. Please contact a technical service representative for more information.