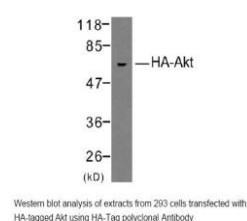


Anti-HA Tag Antibody (Rabbit Polyclonal)

Antibody Type Antibody



Picture Immunogen The antiserum was produced by immunizing rabbit with synthesized peptide containing the influenza hemagglutinin epitope (Y-P-Y-D-V-P-D-Y-A).

Specificity HA-Tag polyclonal antibody detects HA-tagged proteins overexpressed in cells. The antibody recognizes the HA-tag fused to either the amino- or carboxy-terminus of targeted proteins in transfected mammalian cells.

Tested Applications WB

Application Notes WB: 1:500~1:1000

Raised In Rabbit

Clonality Polyclonal

Isotype IgG

Purity The antibody was affinity-purified from rabbit antiserum by affinity-chromatography using epitope-specific peptide.

Storage Buffer phosphate buffered saline (without Mg²⁺ and Ca²⁺), pH 7.4, 150mM NaCl, 0.02% sodium azide and 50% glycerol.

Formulation Liquid

Concentration 100ug/100ul

Storage Store at -20°C/1 year

References Field, J. et al. (1988) Mol. Cell. Biol. 8, 2159-2165.

Caution Anti-HA Tag Antibody (Rabbit Polyclonal) is for research use only and is not intended for therapeutic or diagnostic applications. Please contact a technical service representative for more information.