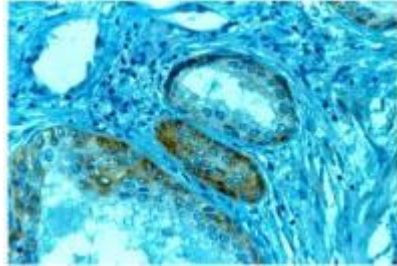


Heregulin 1 antibody [7D5] Mouse monoclonal [7D5] to Heregulin

Catalog Number GTX22369

Full Name	neuregulin 1
Synonyms	142445 HRG Heregulin1 NRG1 GGF2 HGL GGF Heregulin 1 NDF 3084 Q02297 HRG1 HRGA 112400 SMDF ARIA
Background	Heregulin binds to e-erbB-3 and c-erbB-4 receptors on mammary and neuronal cells with low and high affinities, respectively. HRG/NDF exists in several isoforms, which are classified in two groups, a and b, that differ in their EGF-like domain and in receptor binding affinity.
Host	Mouse
Clonality	Monoclonal
Clone No	7D5
Subclass	IgG2a
Immunogen	Recombinant extracellular domain of rat NDF protein.
Antigen Species	Rat
Cross Reactivity	Mouse, Rat - Not yet tested in other species.
Applications	IHC (Frozen sections), IHC (Formalin-fixed paraffin-embedded sections), Immunoprecipitation, Western blot. The usefulness of this product in other applications has not been determined.
Application Note	IHC: This antibody may be diluted to a titer of 1:50-1:100 in an ABC method. We suggest an incubation period of 30 minutes at room temperature. However, depending upon the fixation conditions and the staining system employed, optimal incubation conditions and antibody dilutions should be determined by the user. Formalin fixed paraffin embedded tissue sections require high temperature antigen unmasking with 10 mM citrate buffer, pH 6.0 prior to immunostaining.
Positive Controls	Prostate carcinoma
Target	Heregulin 1
Cellular Localization	Cytoplasmic, intercellular spaces
Form Supplied	Liquid
Purification	IgG fraction
Storage Buffer	Phosphate-buffered saline, pH 7.2, containing 0.05% sodium azide
Storage Instruction	Store at 4-8 °C.



IHC Image using GTX22369 - Detection of Heregulin 1 by IHC in Human Prostate Carcinoma

ALL PRODUCTS ARE FOR IN VITRO RESEARCH USE ONLY AND ARE NOT FOR DIAGNOSTIC OR THERAPEUTIC PURPOSES. For product guarantee and other terms and conditions please visit www.genetex.com under "Company Policy "