



Data Sheet

Product Name: Mouse Anti-Vimentin Monoclonal Antibody

Catalog No.: Y3322VIM

Clone Number: V9

Lot No.:

Quantity: 200 µg

Volume: 1 ml

Concentration: 200 µg/ml

Monoclonal: Primary Secondary **Polyclonal:** Primary Secondary

Source Species: Chicken Mouse Rabbit Goat Horse Other_____

Antigen Species: Human Mouse Rabbit Rat Other: Pig

Labeling: None HRP AP Biotin Dye Other_____

Description: Intermediate filaments (IFs) are a major component of the "cytoskeleton" of "higher" eukaryotes. Vimentin is an intermediate filament protein mainly specific of the mesoderm *in vivo*. *In vitro*, vimentin synthesis is characteristic of proliferating cells, regardless of their embryonal origin, and is switched off upon differentiation of certain precursor cells. Vimentin, a major structural component of IFs in many cell types, is shown to play an important role in vital mechanical and biological functions such as cell contractility, migration, stiffness, stiffening, and proliferation.

Applications and Suggested Dilutions (Sensitivity):

- Western blot: 1:100-1:500
- ELISA: 1:200,000
- Immunoaffinity purification of Vimentin
- Immunohistochemistry: 1:10-1:50
- Immunoprecipitation: 1:200
- Optimal working dilutions must be determined by end user

Source: Mouse monoclonal antibody produced by hybridoma clones.

Isotype: IgG1/ κ

Format/Reconstitution: Liquid immunoglobulin was purified from ascites by protein G column and stored in PBS with 0.2% BSA and 0.09% sodium azide. No reconstitution is necessary.

Immunogen/Sequence: Purified vimentin from pig eye lens.

Mol. Wt. Of Antigen: 57-60 kDa

Protein Specificity: Western blot shows single band of Vimentin in major organs of Human, Rat, Mouse, and Chicken etc.

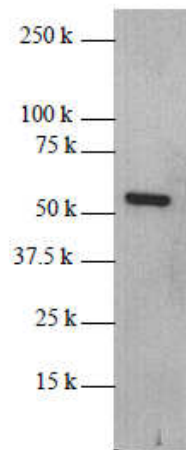
Tissue/cell line Specificity and Cellular Localization: All tissues in Cytoskeleton.

Species Specificity: Human, Monkey, Cow, Horse, Pig, Rabbit, Dog, Cat, Rat, Mouse, Hamster, Gerbil, and Chicken.

Storage/handling: Maintain at 2-8°C in undiluted aliquots for at least 6 months after date of receipt.

*BioChain Institute, Inc. 3507 Breakwater Avenue, Hayward, CA 94545
Tel: 888-762-2568 Fax: 510-783-5386 E-mail: cs@biochain.com Website: www.biochain.com*

Western Blot Analysis:



Western blot analysis of Vimentin protein expression in human liver cytoskeleton proteins

Key Reference:

1. Evans R.M. 1998. Vimentin: the conundrum of the intermediate filament gene family. *Bioessays* 20(1): 79-86.
2. Clarke E.J. 2002. Intermediate filaments: vimentin moves in. *Curr Biol.* 12(17): R596-8

Important Note: During shipment, small volumes of antibody will occasionally become entrapped in the seal of the product vial. For antibodies with volumes of 200 μ l or less, we recommend gently tapping the vial on a hard surface or briefly centrifuging the vial in a tabletop centrifuge to dislodge any liquid in the container's cap.



Certificate of Analysis

Product Name: Attoglow Western Blot Enhancing Kit - *with Millennium Enhancer*

Catalog No.: K3172120/K3172250 **Lot No.:** B409133

Shipping and Storage Condition: Ship and store at Room Temperature.

Shelf Life: 1 year from the date of receipt under proper storage conditions

Description

Components of Attoglow Western Blot Enhancing Kit are prepared with pure chemicals according to the

proprietary technology. They are used for ultra-sensitive chemiluminescent analysis of western blot.

This kit

provides a complete system for western blot analysis, including 1) powerful, novel proprietary technology,

Millennium Enhancer, which could significantly boost western blot signals, 2) protein interaction system and 3)

Attoglow blocking agent. Two different sizes are available, which are good for 1,200 cm² and 2,500 cm² of

membrane, respectively.

Quality Control

- Run two samples, which contain 10 fg and 10 pg of purified rabbit muscle GAPDH protein in duplicate, on SDS-PAGE. Transfer the gel to a PVDF membrane. Cut the membrane into two pieces, each contains one set of samples. Treat one piece with Millennium Enhancer, another as an untreated control, and both blotted with anti-GAPDH antibody clone 6C5 and HRP-conjugated anti-Mouse IgG. The 10 fg-sample should give one visible band only on the treated membrane, and the band should be almost as dark as that shown by the 10 pg-sample on the untreated membrane.

- Components in this kit are free of precipitate. When testing by visible spectrophotometry, the color of the solution is comparable to a control (previous) Lot. Results from this Lot of kit are comparable to those obtained with control (previous) lot of the solution.

Components

1. 1 Attoglow Western Blot Enhancing Kit
2. Certificate of Analysis
3. One complete Manual
4. MSDS