

Fluorescent Protein Antibody Set

CATALOG #: K817-6-100

AMOUNT: 6 x 100 µg

LOT #: _____

CONTENTS:

Target	Host	Applications	Conc. (µg/ml)	Cap Code	Part#
EGFP*	Rabbit	WB/IP	0.2	Green	3999-100
BFP	Rabbit	WB/IP**	0.5	Blue	5994-100
CFP	Rabbit	WB	0.5	Violet	5986-100
dsRed	Rabbit	WB/IP**	0.5	Red	3993-100
mCherry	Rabbit	WB	0.5	Orange	5993-100
YFP	Rabbit	WB/IP/IF	0.5	Yellow	3991-100

* The antibody reacts with GFP, and its variants.

** IP application based on customer's feedback

FORMULATION:

100 µg of each of the affinity purified antibody in phosphate buffered saline (PBS), pH 7.2, containing 30 % glycerol, 0.5 % BSA and 0.01 % thimerosal.

STORAGE CONDITIONS:

Store at -20°C. For long-term storage, aliquot and freeze at -70°C. Avoid repeated freeze/thaw cycles.

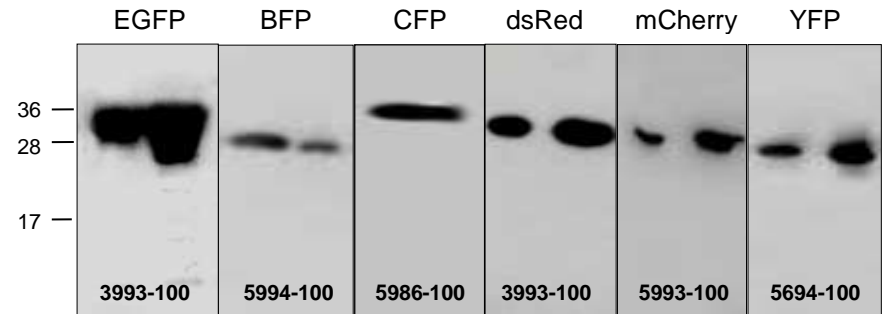
SHELF LIFE: 12 months

APPLICATIONS:

As shown in the Table above. Antibodies can be used for Western blot (0.5 - 4 µg/ml), Immunoprecipitation (10 - 20 µg/ml), and Immunofluorescence. However, the optimal concentrations should be determined individually.

NOTE:

Individual antibody can also be purchased using the Part# listed in the Table.



Western Blot Analysis Using Recombinant Fluorescent Proteins Probed with Individual Antibodies, as Indicated Above. EGFP (250 ng, 1 µg); BFP (100 ng, 50 ng); CFP (100 ng, 50 ng); dsRed (10 ng, 20 ng); mCherry (10 ng, 20 ng) and YFP (10 ng, 20 ng).

RELATED PRODUCTS:

- Recombinant EGFP, BFP, CFP, dsRed, mCherry and YFP Proteins
- Fluorescent Protein Antibodies
- GFP & RFP Expression Vectors
- GFP Quantification Kit
- Secondary Antibodies
- Loading Control Antibodies
- Western Blot Substrate Kit

OTHER FEATURED PRODUCTS:

- Apoptosis Detection Kits & Reagents
- Cell Fractionation Kits
- Cell Proliferation & Cytotoxicity Kits
- Metabolism Assay Kits
- Cell Damage & Oxidative Stress Assays
- Cholesterol & Obesity Assay Kits
- Protein A, G, L & Sepharose Beads
- Protein Extraction & Purification Products
- Signal Transduction Assay Kits & Reagents
- Molecular biology Kits & Enzymes
- Growth Factors & Cytokines
- Antibodies
- Biochemical and Inhibitors

FOR RESEARCH USE ONLY! Not to be used on humans.