

LF-PA40638
anti-Antigen Ki-67 (KI67)

Product Name

anti-Antigen Ki-67 (KI67)

Pack Size

50 ug

Description

Rabbit polyclonal to Antigen Ki-67 (KI67)

Immunogen

Synthetic peptide

Clonality

Polyclonal Antibody

Host

Rabbit

IsoType

IgG

Cross Reactivity

Hu, Rt

Application

WB
IHC-P (Min: 10 ug/ml)

Concentration

0.2 mg/ml

Research Area

[Cell Biology](#)

Function

Thought to be required for maintaining cell proliferation.

Cellular Location

Nucleus

Database Link

SwissProt : [P46013](#)

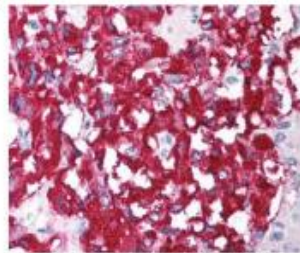
Composition

PBS (pH7.4) containing 0.2% BSA and 0.05% sodium azide

Storage

+4°C, avoid cycles of freezing and thawing

Image



IMMUNOHISTOCHEMICAL ANALYSIS of Adrenal
(Formalin-Fixed Paraffin-Embedded)