

## LF-PA41334 anti-Aquaporin 2

**Product Name**  
anti-Aquaporin 2

**Pack Size**  
50 ug

**Description**  
Rabbit polyclonal to Aquaporin 2

**Immunogen**  
Synthetic peptide (synthetic peptide corresponding to N-terminal residues of human AQP2(aquaporin 2))

**Clonality**  
Polyclonal Antibody

**Host**  
Rabbit

**Isotype**  
IgG

**Cross Reactivity**  
Hu

**Application**  
E (1 ug/ml)  
WB (1 ug/ml)  
IHC-P ( 20 ug/ml)

**Concentration**  
0.5 mg/ml

**Research Area**  
[Cell Biology](#)

**Function**  
Forms a water-specific channel that provides the plasma membranes of renal collecting duct with high permeability to water, thereby permitting water to move in the direction of an osmotic gradient.

**Cellular Location**  
Apical cell membrane Cytoplasmic vesicle membrane

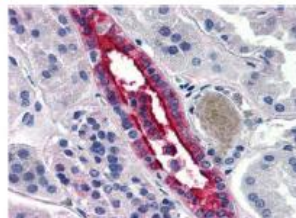
**Database Link**

SwissProt : [P41181](#)

**Composition**  
PBS, 0.01% sodium azide and 50% glycerol

**Storage**  
+4°C or -20°C, Avoid repeated freezing and thawing.

Image



IMMUNOHISTOCHEMICAL ANALYSIS of kidney  
(Formalin-Fixed Paraffin-Embedded)