



# *Anti-Human IL-6*

## *Monoclonal Antibody*

### *Clone 33A12*

*Catalog: MAB-100-IL6*

#### **Specifications and Use**

**Target:** Human Interleukin-6  
**Host and Isotype:** Mouse, IgG1/k  
**Immunogen:** Full length recombinant Human IL-6  
**Buffer:** 0.02 M Potassium Phosphate, 0.15 M Sodium Chloride, pH 7.2 with no stabilizers or preservatives  
**Storage:** Store at 2-8°C for use within 1-3 weeks or -20°C for long term storage, avoid repeat freeze thaws.

**Label:** Unlabeled  
**Physical State:** 0.5 mg/mL solution  
**Endotoxin Level:** <0.1EU/μg

**Alternate Target Names:** IFN-β2, B-cell Differentiation Factor, BSF-2, HSF, MGI-2

#### **Description:**

Interleukin 6 (IL-6) is an important pro-inflammatory and anti-inflammatory cytokine expressed by T cells, macrophages and muscle cells. IL-6 signals through a receptor complex containing two receptors, IL-6Rα and gp130. IL-6 has an important function in promoting fever and can serve to stimulate an immune response to trauma. IL-6 is often used for growth of hybridoma cell lines. Human IL-6 is active on mouse and rat cells.

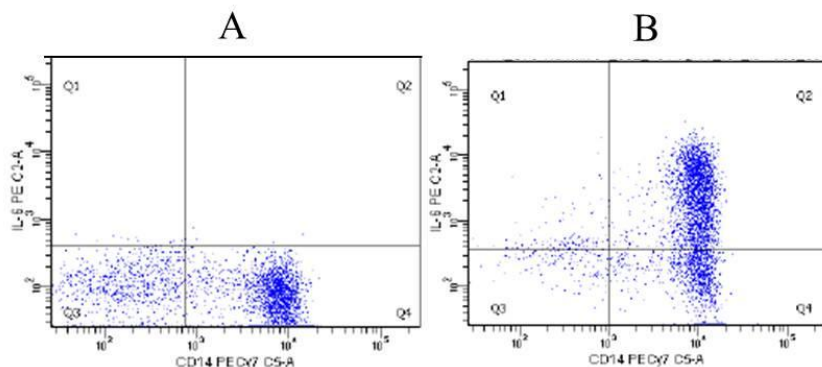
#### **Reported Applications:**

Flow Cytometry  
Western Blot  
ELISA

#### **Recommended Dilution\*:**

0.1 μg/mL starting  
1:1000 starting  
No Data

**\*INVESTIGATORS ARE ADVISED TO TITRATE ANTIBODIES TO REACH OPTIMAL ASSAY CONDITIONS FOR THEIR SPECIFIC NEEDS.**



Human PBMCs were left unstimulated (A) or stimulated (B) with 1 ug/mL LPS in the presence of a protein transport inhibitor for 5 hours. Cells were stained with an anti-CD14 antibody (x axis) on the surface and an intracellular stain for anti-IL-6, clone 33A12 (y axis).

**THIS PRODUCT IS FOR RESEARCH USES ONLY! THIS PRODUCT IS NOT FOR USE IN HUMANS!!!**

Gentauro Molecular Products  
Voortstraat 49  
1910 Kampenhout, Belgium