

Pax 7

Mouse Monoclonal Antibody

Catalog Number	Size
MO15020	100 ug

Type: Mouse IgG

Applications: ICC; IHC

ICC=Immunocytochemistry; IF=Immunofluorescence; IHC=Immunohistochemistry; WB=Western blotting; FC=Flow Cytometry; IP=Immunoprecipitation; E=ELISA; NB=Neutralization of Bioactivity; FACS; FM=Fluorescent Microscopy; ; FPLC=Fast Protein Liquid Chromatography; GF=Gravity Flow; HPLC=High Performance Liquid Chromatography; TPE=Targeted Protein Expression; ; AC=Adherent Cell Assays; ; NAC=Non-adherent Cell Assays; ; BSC-CM5= Biacore Sensor Chip CM5;

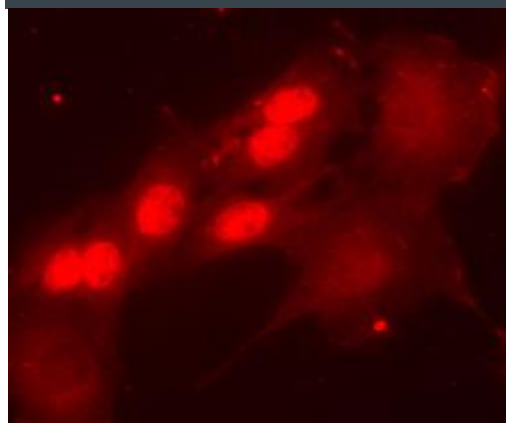
Species Reactivity: Ch; H; M; R

B=Bovine; Ca=Cat; Ch=Chicken; D=Dog; EQ=Equine; GP=Guinea Pig; H=Human; M=Mouse; P=Porcine; Pr=Primate; R=Rat; Rb=Rabbit; Y=Yeast; Xe=Xenopus; Ze=Zebrafish; ; ; NA=Not Applicable; STP=Step-Tactin Proteins

Format: Protein G Purified - liquid

Immunogen: Recombinant chicken Paired box gene 7 (Pax7) protein (amino acids 352 - 523)

Description/Data:



Members of the Pax family of transcription factors contain a paired box DNA binding domain and may or may not contain a paired-type homeodomain and/or octapeptide region. Nine Pax genes have been identified in mammals and are divided into four subgroups based on the sequence elements present. Pax genes play a variety of roles during embryogenesis, regulating cell-lineage specification, proliferation, migration, and survival of diverse cell and tissue types. Several of the Pax genes are also expressed in cancers and serve as tumor markers.

Image: PAX7 staining of mouse C2C12 cells. Cells were stained with Rhodamine Red-conjugated donkey anti-Mouse IgG secondary antibody.