

NRG1 Antibody (k1G13)

This product is for research use only and is not approved for use in humans or in clinical diagnosis. Products are guaranteed for six months from the date of receipt except for peptides and proteins which are guaranteed for 3 months

Specificity/Sensitivity

NRG1(HRG-beta3) (k1G13)

Immunogen

Recombinant human NRG1 isoform HRG-beta3 (20-241aa) purified from E. coli

Recommended Dilutions

ELISA 1:1000 - 2000, Western Blot 1:1000 – 2000

Buffer

Phosphate-Buffered Saline (pH 7.4)

Uses

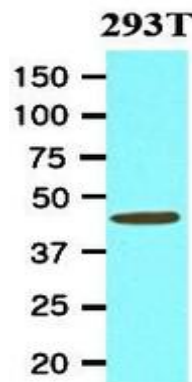
ELISA and Western Blot

References

Talmage D.A, et al., (2008) Novartis Found Symp. 289:74?93Li B, et al., (2007) Neuron. 54 (4):583?597Law A.J, et al., (2006) Proc Natl Acad Sci U S A. 103(17):6747?675

Images

SDS-Page: NRG1 Antibody (k1G13) [NBP1-07091] - Cell lysates of 293T (20ug) were resolved by SDS-PAGE, transferred to NC membrane and probed with anti-human NRG1 (1:1,000). Proteins were visualized using a goat anti-mouse secondary antibody conjugated to HRP and an ECL detection system.



Unit Size

0.1 ml

Concentration

1.0 mg/ml

Storage

Store at 4C short term. Aliquot and store at -20C long term. Avoid freeze-thaw cycles.

Applications

ELISA, WB

Species

Human

Host

Mouse

Clonality

Monoclonal

Isotype

IgG1 Kappa

Purity

IgG purified

Preservative

0.1% Sodium Azide

GENTAUR