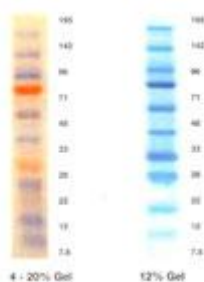


Product name: **RunBlue Prestain Markers**
 Catalog number: **NXA05160**
 Quantity: **600ul**

RunBlue Prestained Markers consist of 195, 142, 96, 71, 48, 33, 28, 22, 12 and 7.6 kDa standards. For additional convenience and ease of identification, the 71 and 28 kDa standards have been conjugated to an orange dye molecule.

A load of only **4 µl RunBlue** Prestained Markers is sufficient for a high intensity marker ladder - up to **2.5x less loading** than conventional ladders!!

The **RunBlue** prestained protein markers for SOS PAGE contains 10 recombinant proteins ranging in size from 7.6 kDa to 195 kDa. For easy visualization the 28 kDa and 71 kDa marker have been dyed pink, the other eight markers are blue. The purity and band sharpness mean the markers can be used for visualizing the separation while running the gel, checking transfer effectiveness of your western blot, or as a routine marker in place of other unstained markers.



STORAGE - Each vial contains 600 µl of markers. Storage long term at -20C or for 3 months at 4C

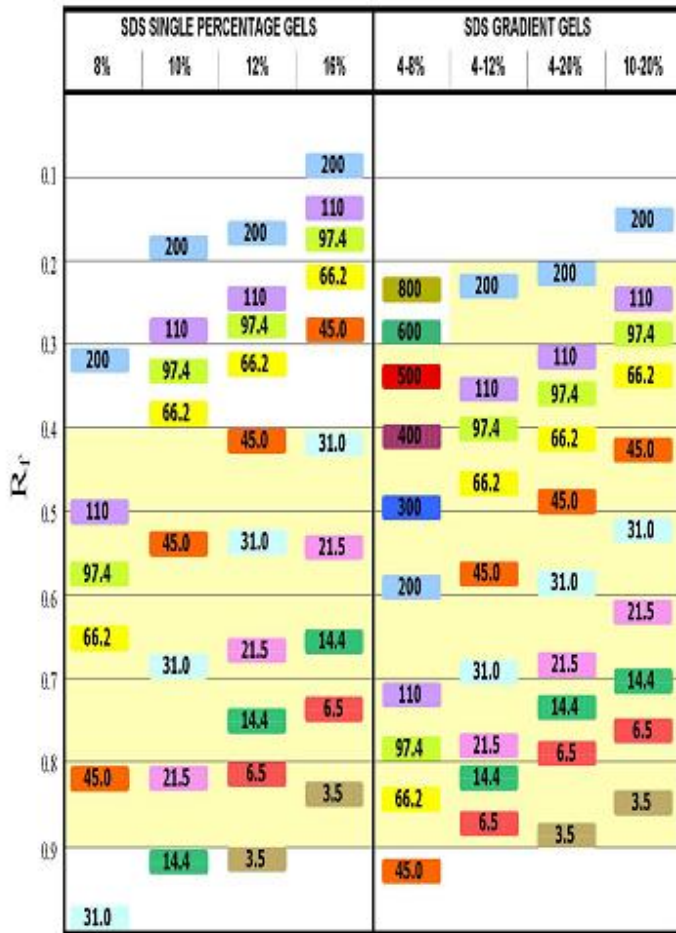
Recommended Load Volumes - RunBlue prestained markers are provided ready to use in 1x RunBlue sample buffer. Recommended volumes to load are:

Application	12 well volume	12 well loads/vial	17 well volume	17 well loads/vial
Monitor during Run	10 µl	60	5 µl	120
Visible after blotting	4 µl	150	2 µl	300
Visible after staining	4 µl	150	2 µl	300

RunBlue Prestained Markers separated on a 12%, 12-well Run-Blue SDS gel.

RunBlue Protein Migration Chart

This chart will help you select the best RunBlue gel for your application



The shaded areas represent the zone where optimal resolution is obtained